

California Trash Monitoring Webinar Series 2021

Strategies & Lessons-Learned to Manage Trash During California's Housing Crisis

Presenters:

Kaitlyn Kalua, Chris Brokate &
Sarah Hutmacher

March 18, 2021



TRASH MONITORING WEBINAR SERIES - 2021

Strategies & Lessons-Learned to Manage Trash During California's Housing Crisis

March 18, 2021

11:30am – 12:30pm

Moderator and Speakers:

- Kaitlyn Kalua (Moderator) - Policy Manager, California Coastkeeper Alliance
- Chris Brokate - Director, Clean Team Program, Russian Riverkeeper
- Sarah Hutmacher - Chief Associate Director, The San Diego River Park Foundation



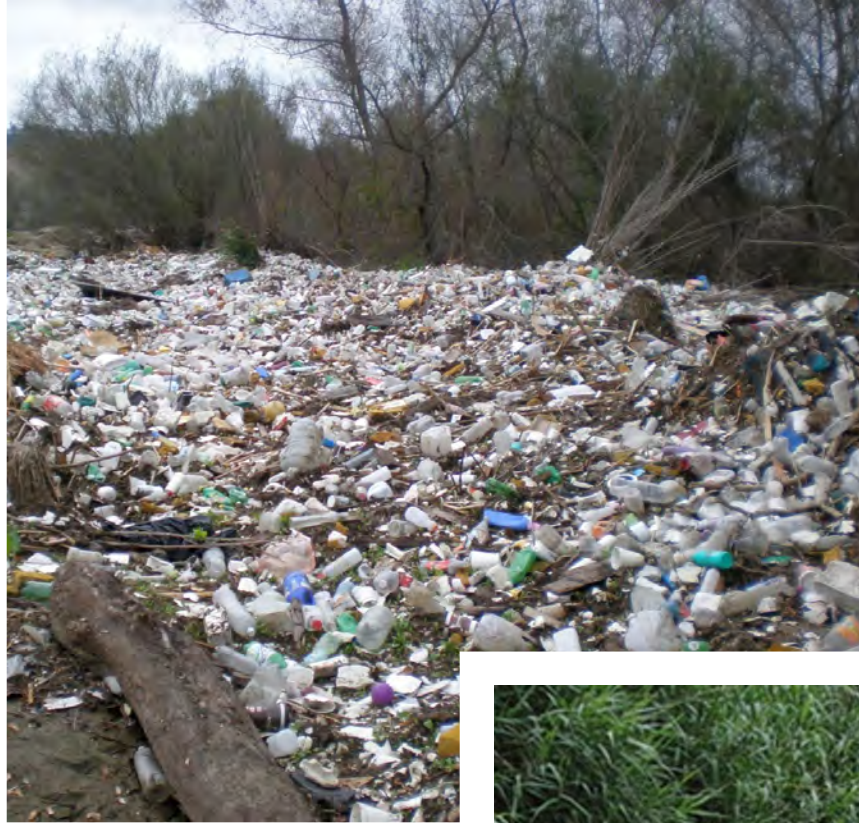
Trash Monitoring Webinar Series
Strategies & Lessons-Learned to Manage Trash During California's Housing Crisis

March 18, 2021

Kaitlyn Kalua, Policy Manager, California Coastkeeper Alliance

AGENDA

- ❖ Kaitlyn Kalua: Statewide Efforts
- ❖ Chris Brokate: Russian Riverkeeper, Clean Team
- ❖ Sarah Hutmacher: The San Diego River Park Foundation
- ❖ Audience: Questions & Answers



THE TRASH POLICY: Minimizing the flow of trash into our waterways

- ❖ Adopted by the State Water Board in 2015
- ❖ Compliance deadlines: 10 years after permit incorporation
- ❖ No later than December 2030



Coverage

MUNICIPAL

- (1) High-density residential: all land uses with at least ten (10) developed dwelling units/acre.
 - (2) Industrial Zones.
 - (3) Commercial Zones.
 - (4) Public Transportation Stations.
-

FREEWAYS

- (1) Highways and on- and off-ramps in high density residential, commercial, and industrial areas.
 - (2) Rest areas and park-and-rides.
 - (3) Mainline highway segments to be identified by the Department through pilot surveys.
-

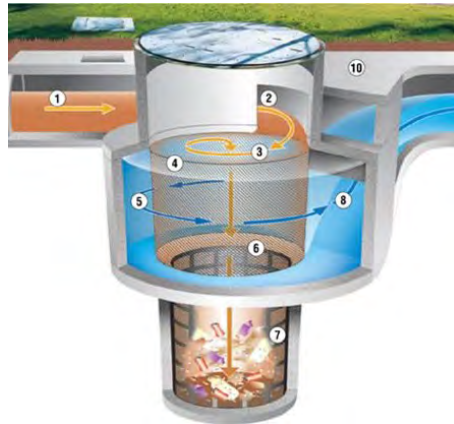
INDUSTRIAL & CONSTRUCTION SITES – Outright prohibition of trash discharges (unless determined to be impossible).

* Outright prohibition of preproduction plastic pellets by manufacturers of pellets, transporters of pellets, and manufacturers that use pellets.

EXEMPTED PROGRAMS – Only the areas covered by the Los Angeles Trash TMDL are exempted. The Bay Area is NOT exempt.

CORE PROGRAM

- TRACK ONE – Install and maintain full capture systems in 100% of storm drains.
- TRACK TWO – Design a trash reduction program with a combination of full capture systems, street sweeping, trash receptacles, education, and source control ordinances.



COMPLIANCE MONITORING

- **POLICY COMPLIANCE MONITORING (Only Track 2)** – Demonstration that the Permittee Attained 100% Full Capture Equivalency.
- **RECEIVING WATER MONITORING (Both Track 1 & 2)** – Demonstration that the Permittee Met the Water Quality Standard of “No Trash Present” by 2030.

Other Discharges

Within the MS4 System

“A permitting authority may determine that specific land uses or locations (e.g., parks, stadia, schools, campuses, or roads leading to landfills) generate substantial amounts of Trash.”



Trash Hot Spots - Outside of the MS4

“A permitting authority may require dischargers to implement any appropriate Trash controls in areas or facilities that may generate Trash. Such areas or facilities may include (but are not limited to) high usage campgrounds, picnic areas, beach recreation areas, parks not subject to an MS4 permit, or marinas.”





TRASH HOT SPOTS

- ❖ High Use Beaches
- ❖ Regional Parks
- ❖ Homeless Encampments



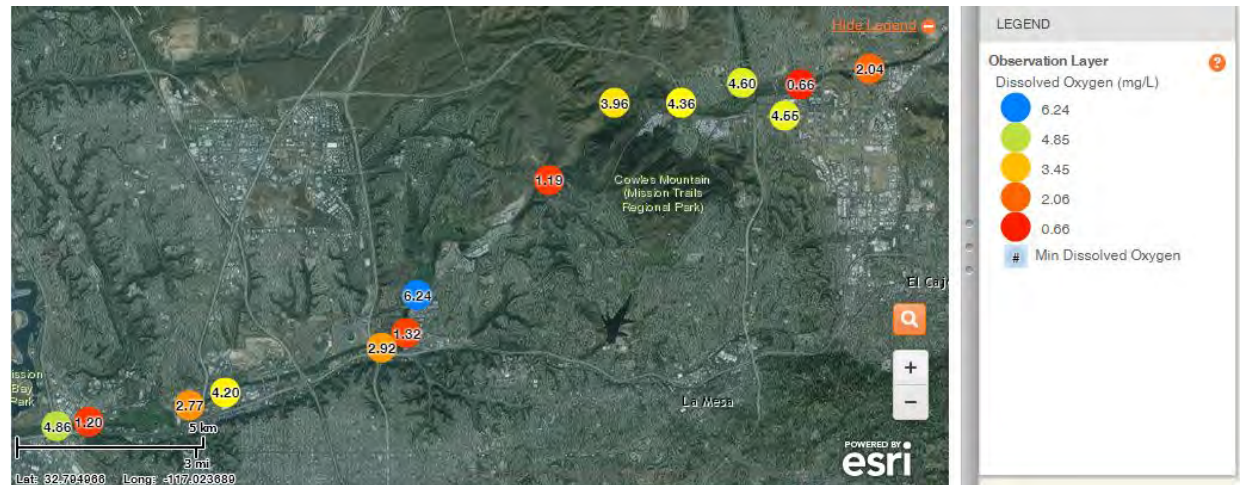
CCKA's Homeless Engagement Report

AT A GLANCE

- ❖ 5 programs surveyed:
 - Sonoma County
 - Sacramento River Parkway
 - San Francisco Bay Area
 - Santa Ana River
 - San Diego River
- ❖ 8 – 1,476 unhoused community members reached
- ❖ 24,260 – 200,000 lbs of trash removed annually
- ❖ 2 – 70 miles reached

Key Take-Aways

1. Program goals vary
2. Different definitions of 'success'
3. Geographic & demographic differences





Water Quality Monitoring Council, Trash Working Group

- ❖ Data Standardization, Management & Coordination Subcommittee
- ❖ Citizen Science Subcommittee
- ❖ Homeless Encampment Subcommittee

Homeless Encampment Subcommittee

Overarching Subcommittee Goals:

- Provide data to the Water Boards to identify and quantify trash generated by homeless encampments.
- Identify best practices and programs (including monitoring, measuring, recording, and the resources necessary) to manage and reduce trash generated by homeless encampments.



Homeless Encampment Committee: Trash Survey

- Purpose: To understand to what extent trash data related to homeless encampments and engagement programs exists – and how it is collected.
- This is a **data-driven** survey. The purpose is to quantify trash and understand what data is being collected.

Homeless Encampment
Subcommittee:
Trash Survey (Cont'd)

- **Part I** of the survey is designed to collect data related to the trash generated by homeless encampments. Part I of this two-part survey is intended for municipalities. (**Circulated Sept. 2020**)
- **Part II** will be more comprehensive to collect substantive information regarding the available trash data and data-collection methods related to trash generated by homeless encampments. (**Coming 2021**)

THANK YOU

To learn more or participate in the subcommittee, visit:

https://mywaterquality.ca.gov/monitoring_council/trash_monitoring/.

Contact: Kaitlyn Kalua,
kaitlyn@cacoastkeeper.org



Clean Camp Program and Homeless Issues

Clean Team Director Chris Brokate



RRK Clean Team History

- Founded as Clean River Alliance sponsored by RRK in 2015, removed over 85,000 pounds trash, volunteer effort with community
- 2016 Clean Camp and Education Program launched in lower River on Thursdays, 160,000 pounds total
- 2018 Chris left job to work full-time as Program Director
- Clean Camp program has lead to speaking engagements around state to share the programs results
- Well over 1 million pounds of trash removed from the Russian River watershed to date, less debris on coast



Clean Camp Program

- 2021 2 FT and 2PT staff working 70 percent time for homeless population work
- Weekly trash pickup on 75 miles of Russian River with four towns and five communities
- Gov't Homeless funding was \$130k/yr, down to \$76k, homeless program cost 2020 was \$160k
- Sonoma County Community Development Commission, Regional Parks, Health Services and donors provide Clean Camp program funding
- Total Clean Team program funding in 2020 was \$226,250 with \$180k from government contracts



- Starting with weekly trash pickups at lower Russian River camps and tabling every Thursday in Guerneville at service provider events
- Consistency is important to build trust, and many homeless eager to participate some take more time
- Piloted a Clean Streets like team in Guerneville, cleaned up downtown area and paid in food and transportation cards, want to work, helps build responsibility
- Homeless consistently help and cleanup trash and maintain a clean camp the more we build trust



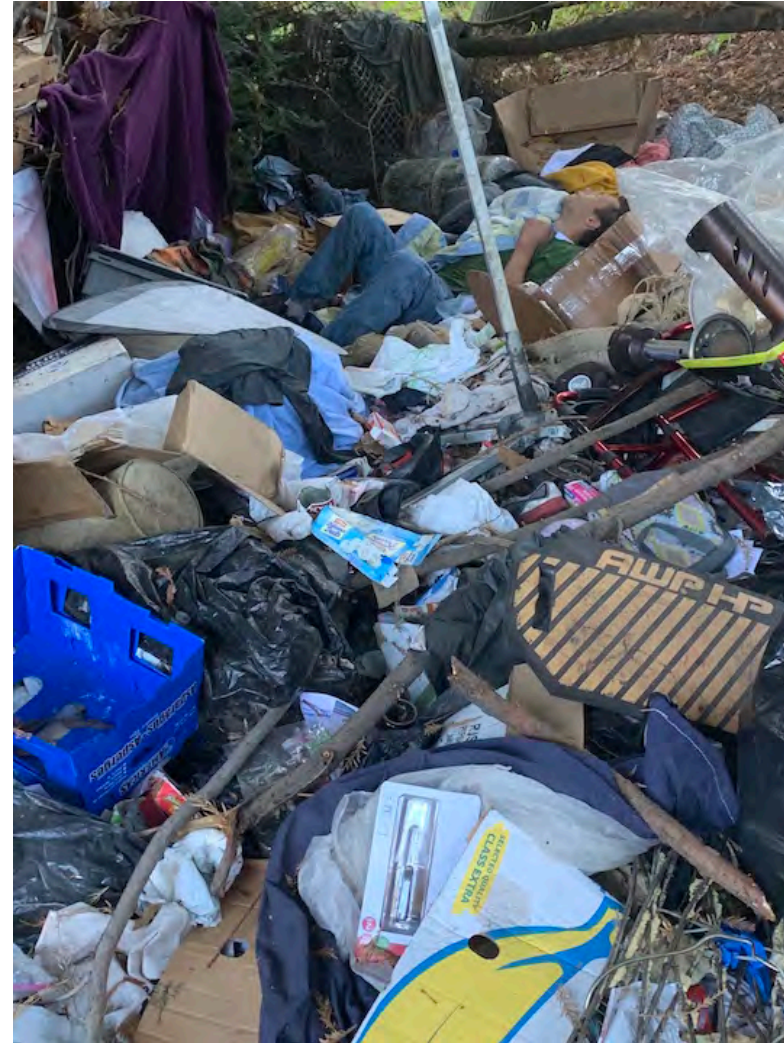
- Homeless population vulnerable to COVID, hard to shelter in place last spring
- Clean Team staff adopted precautions, used to working in hazardous situations
- Assisted service providers delivering meals, water, PPE and personal care supplies while collecting trash
- Partnered with COVID temporary camps and navigation center to provide volunteer trash work
- Increased strength of relationship with local homeless during COVID by showing we care



- Leave people in place until there is permanent housing they agree to go to, shelters often do not meet needs or not safe and are temporary
- Provide basic services at or near active camps, portable restrooms, trash, service providers
- Develop an exit strategy for camps when entering housing, most often mess left behind
- Mobile service provider teams w medics and Clean Team service rural camps each week, trade knowledge
- Government & NGO partnerships, Sonoma County key to Clean Team success



- Policy of moving people with no place to go, harms people/more trauma and environment as they make new camps
- Hoarding with no consequences, one person in Healdsburg over 35,000 pounds in last 3 years
- Pushing homeless just over political boundaries or pretending no homeless
- Homeless service providers who do not acknowledge trash issue and how they contribute to problem by ignoring it
- Mowing Trash: Homeless along roads



Questions?



Feel free to reach out with more questions and input!

chris@russianriverkeeper.org



INTERSECTIONALITY IN ADDRESSING HOMELESSNESS AND TRASH IN THE SAN DIEGO RIVER

Sarah Hutmacher, Chief Associate Director





ABOUT US

The San Diego River Park Foundation is a 501(c)3 nonprofit organization dedicated to creating a better future for the San Diego River. We advance efforts to reduce trash, enhance habitat, conduct research, increase community engagement and stewardship, offer hands-on youth education, and conserve land through acquisition.



OUR TRASH MANAGEMENT MODEL: Data-informed impact



Site condition
data collection



Landowner
coordination



Clean-up

... AND REPEAT!

DATA COLLECTION: Our role

Data visualization on custom mapping tool. Volunteer citizen scientists are trained to collect data using smart phone app (Mappler K2).

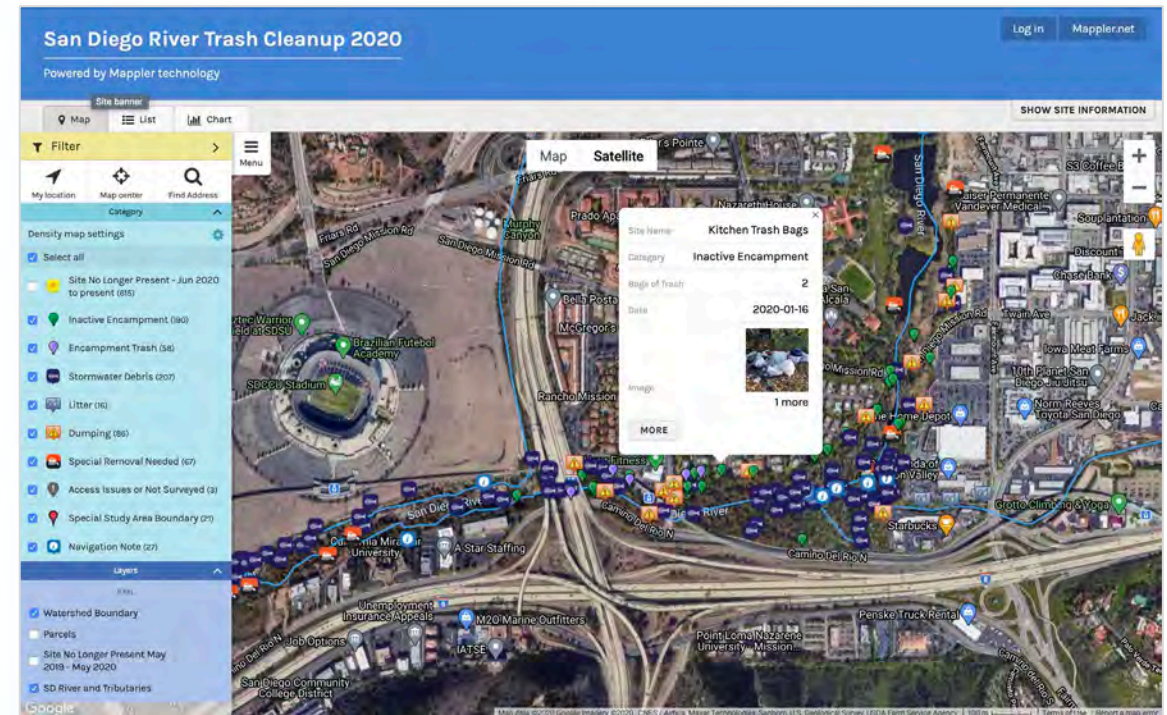
QA/QC by staff and interns.

Allows functionality to issue variable permission logins (view/edit), and to password-protect some data.

Each survey covers a segment of riverbed (0.5 mile – 2+ miles each)

2-4 surveys/week year-round across 24 miles of lower San Diego River means most segments surveyed no less frequently than monthly.

<https://immapper.com/sandiegorivertrash/>

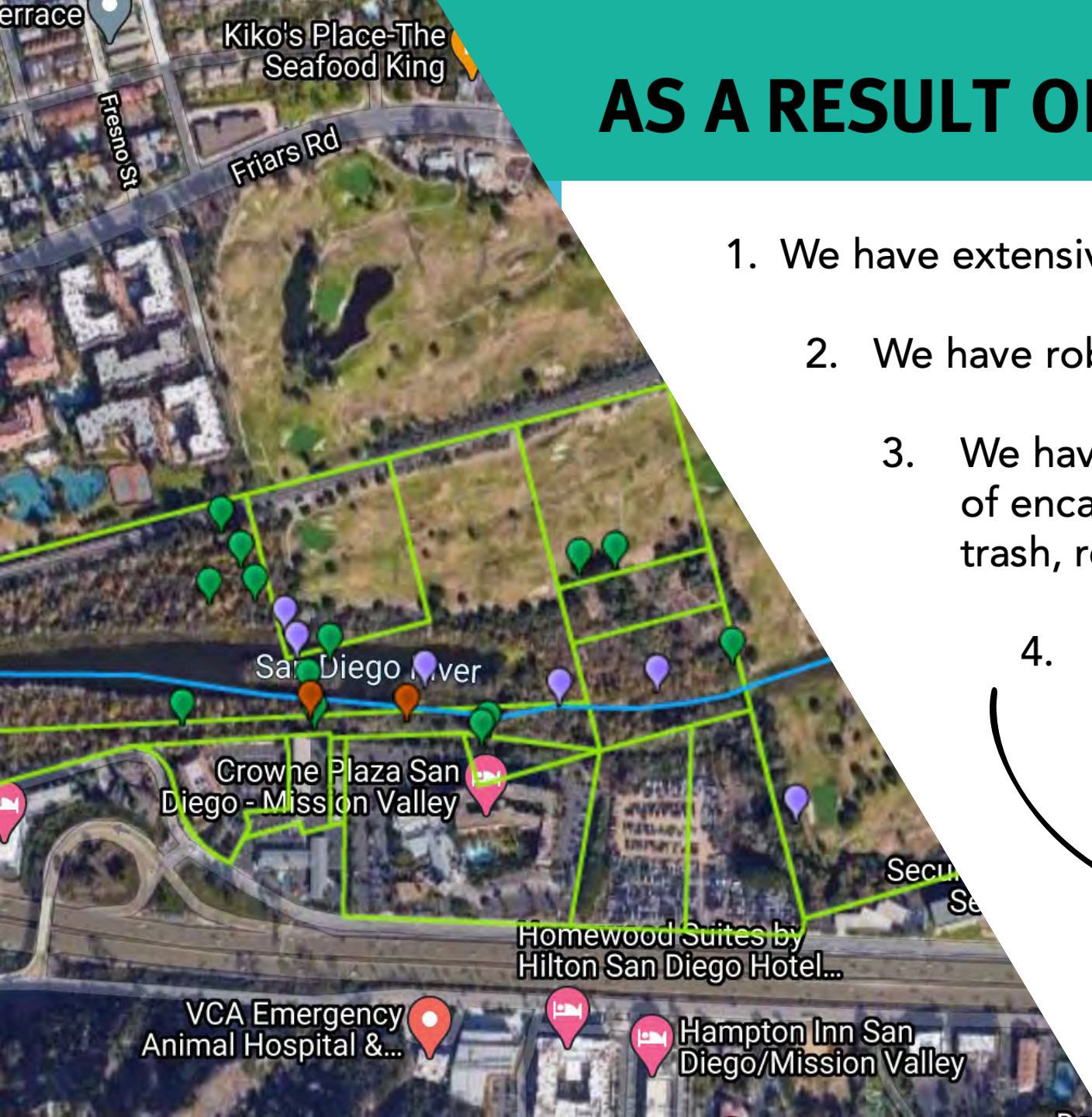


AS A RESULT OF THIS DATA COLLECTION:

1. We have extensive knowledge of the riverbed
2. We have robust relationships with stakeholders
3. We have multi-year dataset containing locations of encampments in the riverbed, quantities of trash, recurrence, etc.
4. We have relationship and familiarity with some of the individuals experiencing homelessness in the riverbed.



**DATA INTERSECTIONALITY
TO ADDRESS MULTIPLE
ISSUES**





ISSUE #1: Environmental Impact



SENSITIVE LANDS

SDRPF collects data about trash on environmentally sensitive lands downstream of MS4 monitoring.



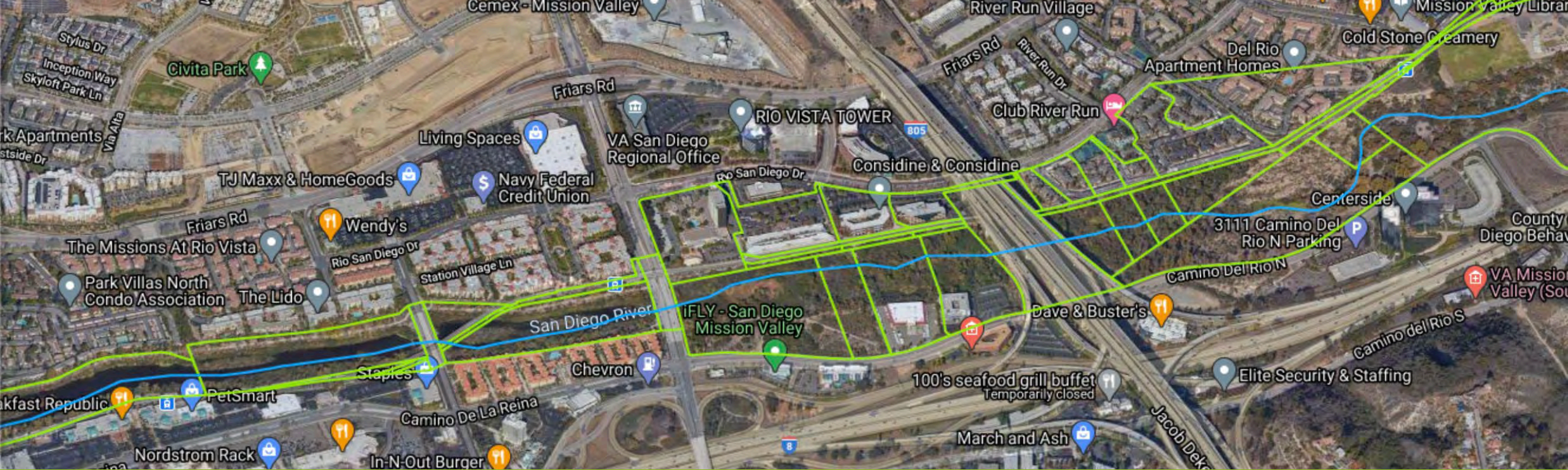
1 MILLION POUNDS

This is the estimated amount of trash entering the San Diego Riverbed annually.



74-95%

In recent years, our data shows that 74-95+% of trash is associated with encampments.



ISSUE #2: Lots of stakeholders with interest in trash mgmt.



Landowners:

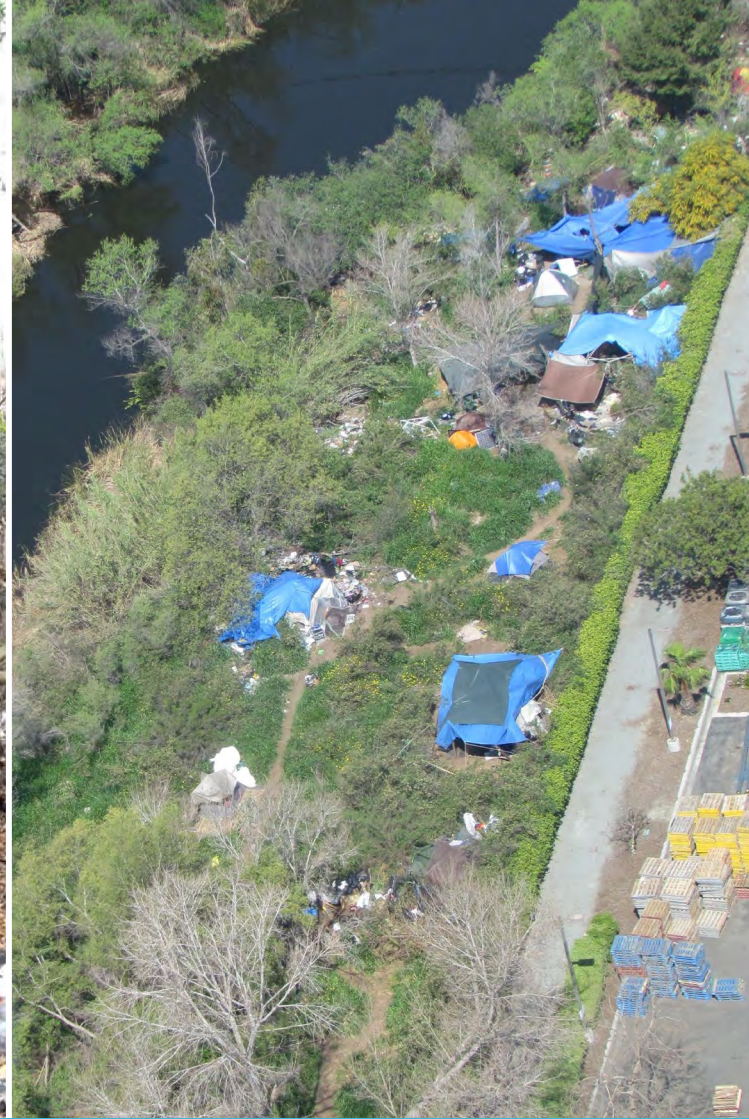
- private property (30+ landowners)
- City of San Diego (6 depts/divisions)
- City of Santee
- 5 other public agencies

Law enforcement entities:

- SDPD
- SD Sherriff's Dept.
- DFW Wardens
- MTS Enforcement
- CHP

PLUS...

- Nonprofits
- Regulatory entities
- Academic institutions
- State agencies



ISSUE #3: People experiencing homelessness in riverbed

CROSS-INDUSTRY PARTNERSHIP: More data-informed impact



DATA COLLECTION, RIVERBED NAVIGATION

SDRPF maps encampments to database, provides navigation assistance, increases outreach efficiency



OUTREACH AND CASE MANAGEMENT

Outreach partner (PATH San Diego) provides case management for resource and housing navigation

EARLY IMPACT

In 2020, we began a pilot partnership with outreach worker joining our survey team 1 day/week.

However, 2020 was incredibly atypical:

- Enforcement changes
- Decreased landowner resources and maintenance
- Cancelled clean-ups



294 CONTACTS

These contacts are important to build trust with this vulnerable population, to screen for urgent needs, and allowed us to provide critically-needed PPE.



5+ PLACEMENTS

PATH reports that multiple of their riverbed clients were connected with a variety of housing as a result of the preliminary outreach effort.



INCREASED ATTENTION

Innovation attracted attention from media, elected officials, and funders.

CONSIDERATIONS: a few factors leading to our partnership



- Approach feels more compassionate and humane to staff and volunteers
- Address root cause of the most significant trash issue affecting San Diego Riverbed
- Tap into funding focused on water quality, human services and/or environmental impact
- Partnership allows collaboration without too much “mission creep”
- Must balance privacy concerns with making data public



- Potentially expensive to startup: 1 FTE for SDRPF and 1 FTE for PATH to start (up to ~25 clients managed)
- Many confounding factors make it difficult to track trash impact directly
- Unknown impact on other parts of the watershed
- Unknown timeline for evaluating ROI



INCREASING PARTNERSHIP: 2021

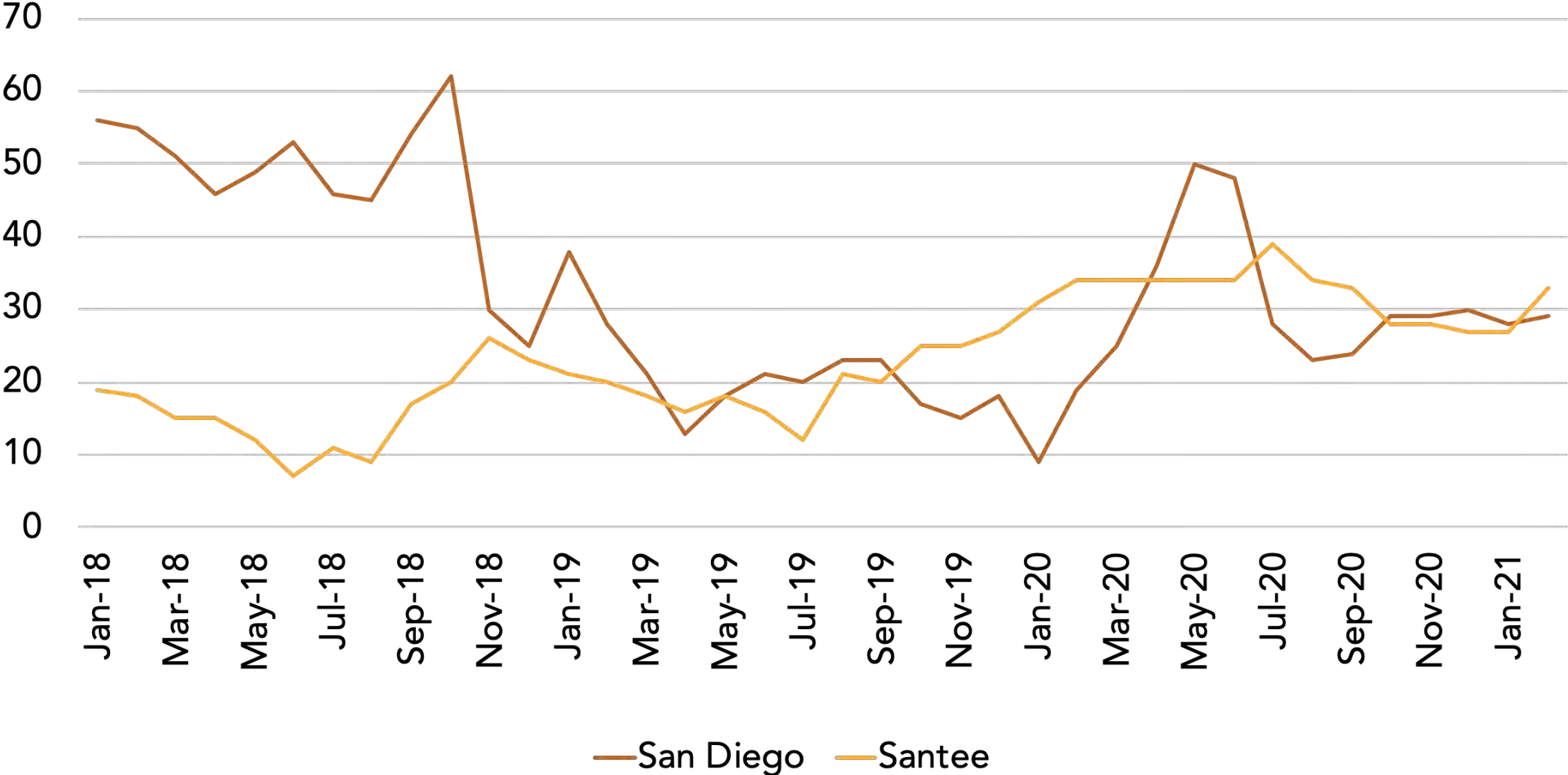
We have secured funding to increase this partnership in 2021, and will be joined by outreach worker 4 days/week.

Too soon for results, but here is what we're tracking:

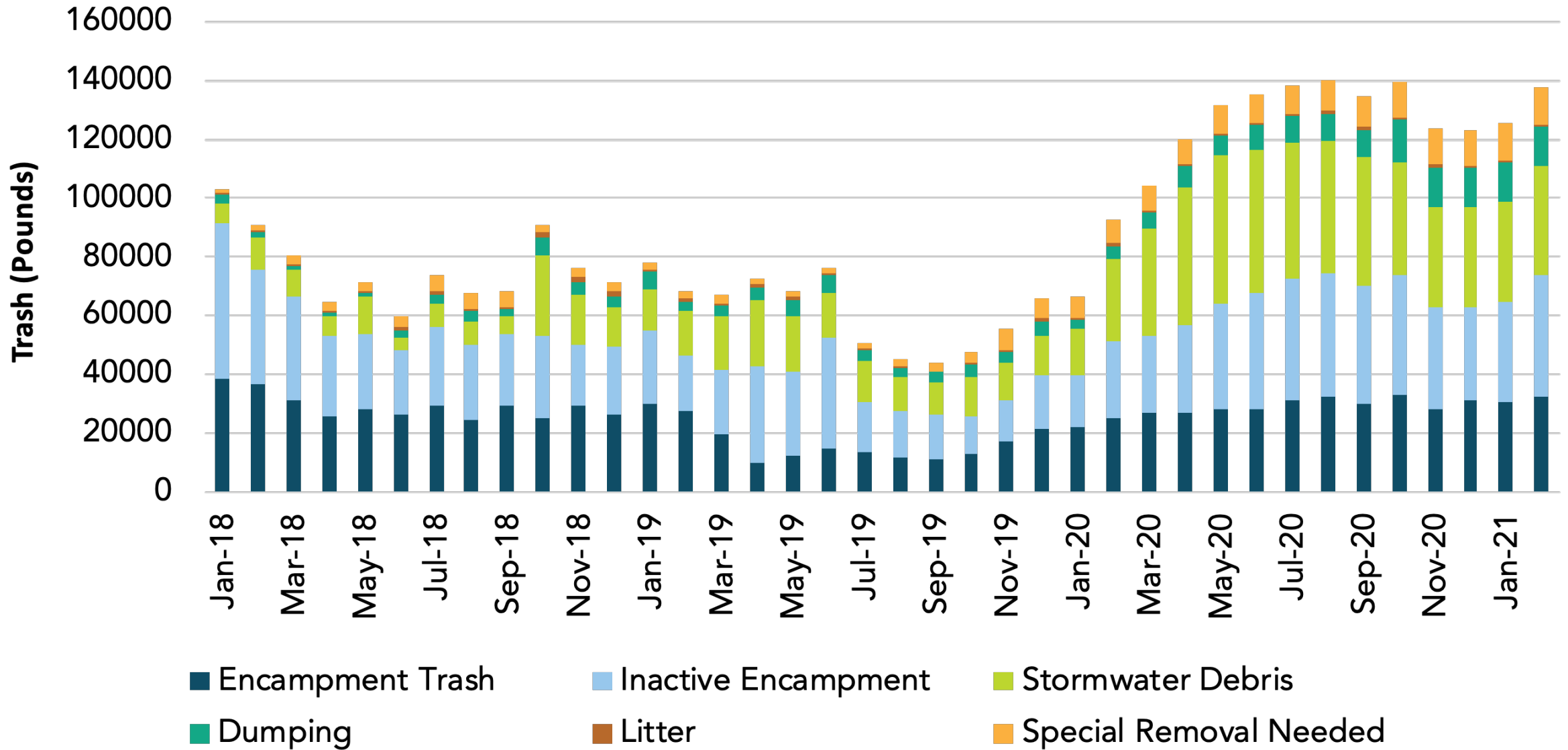
Outreach partner is tracking number of contacts,
number of clients, number of housing connections.

We are tracking...

NUMBER OF ENCAMPMENTS



TRASH IN SAN DIEGO RIVERBED



QUESTIONS?



CONTACT:

Sarah Hutmacher

Chief Associate Director

sarah@sandiegoriver.org