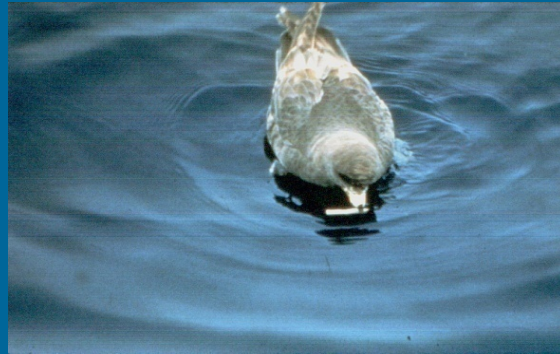


Monitoring Trash, TMDLs and Efforts towards Compliance



Eric Wu, Ph.D., P.E.
Los Angeles Regional Water Quality Control Board

Impacts on Beneficial Uses



Los Angeles Times Photo. By Rick Meyer (January 22, 2001)



Trash TMDL Locations



Trash TMDLs

- 2000
 - San Gabriel River East Fork
- 2001
 - Ballona Creek and Wetland
- 2007
 - Machado Lake
 - Revolon Slough and Beardsley Wash
 - Ventura River Estuary
 - Lake Elizabeth, Munz Lake and Lake Hughes
 - Legg Lake
 - Los Angeles River (initiated 2001)
- 2008
 - Malibu Creek Watershed
- 2009
 - Santa Monica Bay Nearshore and Offshore Zone



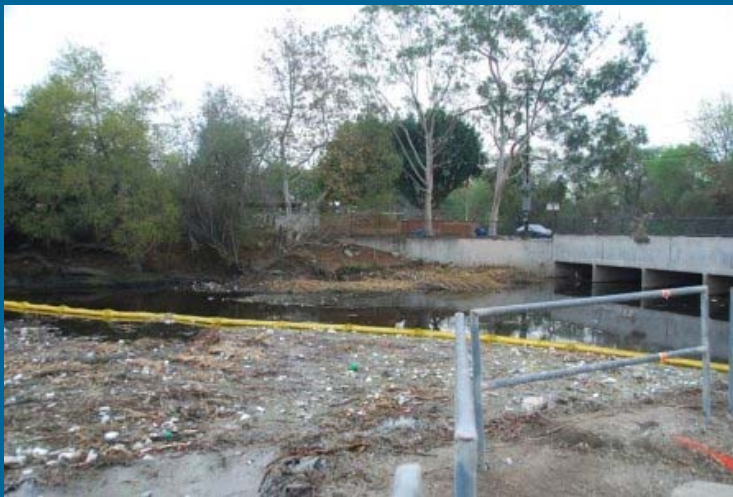
Water Quality Objectives

Basin Plan

- *“Waters shall not contain floating materials including solids, liquids, foams, and scum in concentrations that cause nuisance or adversely affect beneficial uses.”*
- *“Waters shall not contain suspended or settleable material in concentrations that cause nuisance or adversely affect beneficial uses.”*

Numeric Target for Trash

- Numeric Target = Zero Trash
 - Consistent with other laws, municipal codes
 - State Board, Office of Administrative Law and EPA approval of zero trash TMDLs
 - Upheld by Court of Appeals



Zero Trash Definition

- Point Sources
 - Zero Trash Discharge
- Nonpoint Sources
 - Zero trash immediately following each cleanup



Compliance Strategy – Trash Point Sources

- Full capture systems
 - Trap all particles greater than 5mm
 - Treat not less than the peak flow rate resulting from a 1-yr, 1-hr storm
- Structural or non-structural Best Management Practices (BMPs)
- Compliance determination
 - Trash loading reduction
 - Surface area



Certified Full Capture Systems

- Certified by Executive Officer of Regional Board
- 5 site-specific FCS certified
- Gross solids removal devices
- Catch basin inserts
- Trash nets
- Vortex separation system
- Continuous deflect system

Gross Solids Removal Devices

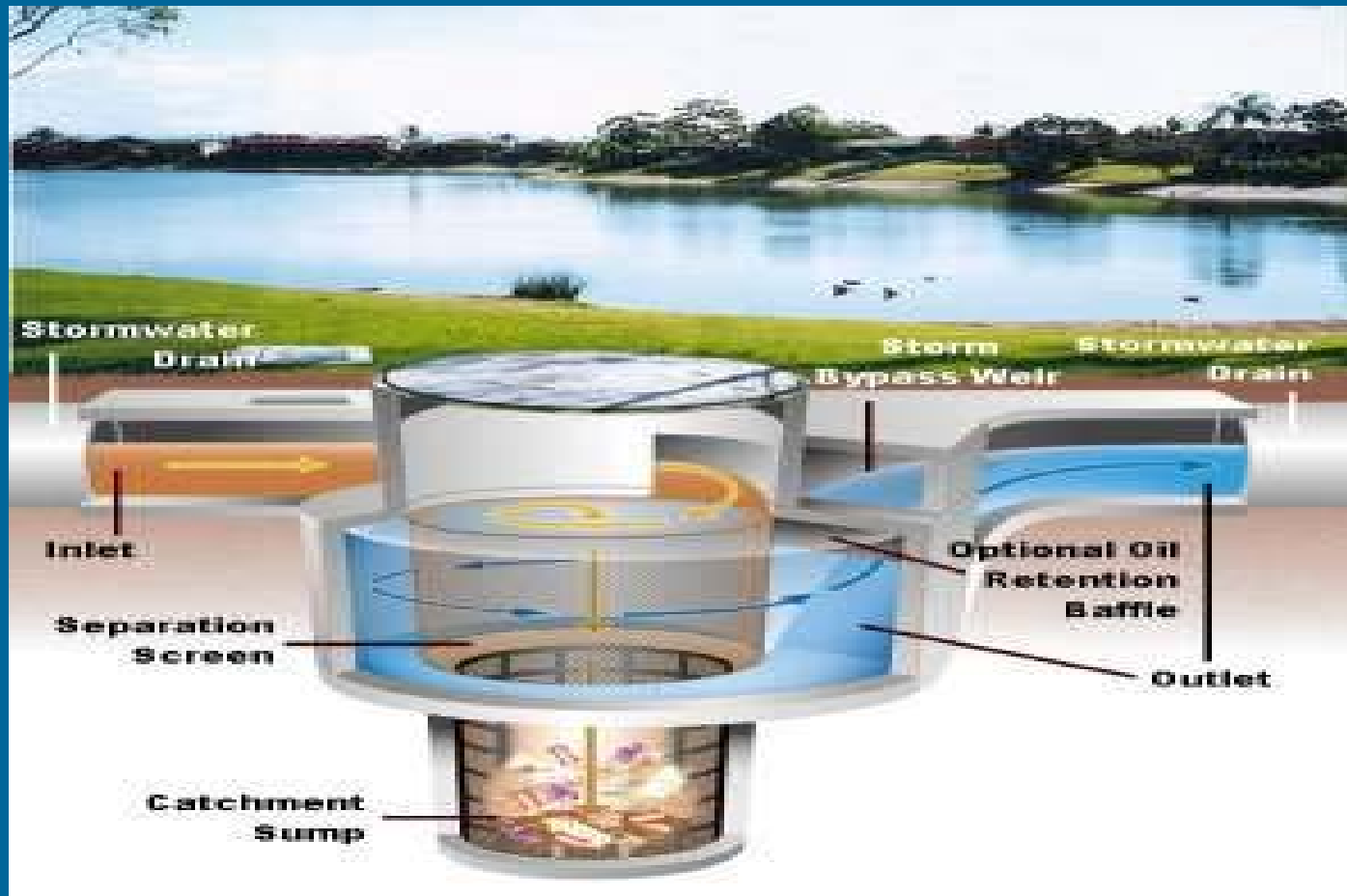
Caltrans



Full Capture Systems



Vortex Separation System



Compliance Strategy - Trash Nonpoint Sources

- Minimum Frequency of Assessment and Collection with BMPs (MFAC/BMP) Program
 - Requirement of regular cleanup
 - Assessment
 - Trash Monitoring and Reporting Plan (TMRP)
 - Executive Officer to revise frequency based on effectiveness of MFAC/BMP



Rapid Trash Assessment

Surface Water Ambient Monitoring Program

- Trash Assessment Parameters
 - Level of Trash (20)
 - Actual Number of Trash Items Found (20)
 - Threat to Aquatic Life (20)
 - Threat to Human Health (20)
 - Illegal Dumping (10)
 - Illegal Littering (10)
 - Accumulation of Trash (20)
- Condition Categories
 - Optimal, Suboptimal, Marginal and Poor



MFAC Implementation

- BMPs
 - Applied on water surface and shorelines
 - Manual pickup
 - Skimming boats
 - Fence filters
 - Adding lids to trash cans
- Oxnard
 - GPS documenting devise



Implementation and Monitoring

- Point Sources
 - MS-4 Stormwater Permits
 - 13267 Report Request
 - 20% reduction each year
 - Achieve Zero Trash in 8 years
- Nonpoint Sources
 - Conditional Waiver
 - Cleanup and Abatement Order
 - Achieve Zero Trash in 5 years
- Monitoring – Annual TMRP Report

Santa Monica Bay Marine Debris

- Define Debris as trash and plastic pellets
- Ocean Plan:
 - “*Floating particulates and grease and oil shall not be visible.*”
- AB 258
- Numeric Target: Zero Plastic Pellets in Santa Monica Bay
- Definition: No plastic pellets discharged from industrial facilities

Additional SMBMD Requirements

- Beaches and Harbors
 - MFAC
 - Daily Cleanup
 - Monthly evening evaluation
- Plastic Pellets
 - 3 tier approach
 - Plastic monitoring and reporting plan (PMRP)

Implementation Schedule

- Point Sources: 8 years
- Nonpoint Sources: 5 years
- Special Provisions:
 - Additional 3 year extension if banning the followings in 5 years:
 - Single use of plastic bags
 - Smoking in public places
 - Single use expanded polystyrene food packaging

Los Angeles River Trash Fact Sheet

- Incorporated in MS4 December 2009.
- Baseline: 2719 tons/year for the watershed
- Requirements: Reduce 50% by October 2010
- Responsible Municipalities: 43
- 5 cities exceeded 50%
- FCS by 10 cities: 1313 tons/year
- PCIC by 8 cities: 105 tons/year
- Overall: 52%

Questions?

- Regional Water Quality Control Board Website:
 - www.waterboards.ca.gov/losangeles/
- Eric Wu, Ph.D., P.E.
 - (213) 576-6683
 - ewu@waterboards.ca.gov

