

State Water Resources Control Board

Office of Information Analysis and Assessment

Quality Assurance and Data Management Unit

19 December 2014

Background

- ▶ Surface Water Ambient Monitoring Program (SWAMP)

“unifying program that would coordinate all water quality monitoring conducted by the State and Regional Water Boards.”



Background

- ▶ SWAMP Strategy Priorities:
 - Coordination
 - Monitoring, Assessment & Reporting
 - State Wide Monitoring
 - Regional Monitoring
 - Infrastructure and Tools
 - Quality Assurance Program *
 - Data Management Program *
 - Methods (SOPs, Thresholds, Indicators)
 - Program Templates
 - Assessment Framework



Background

- ▶ For over a decade, SWAMP has contracted with Moss Landing Marine Labs (MLML) to provide Quality Assurance and Data Management infrastructure and Help Desk services.
- ▶ 2006 to 2014: SWAMP Quality Assurance Help Desk
- ▶ 2006 to 2011: SWAMP Data Management Help Desk
- ▶ 2011 to Current: CEDEN Help Desk



Help Desk Quality Assurance Services Included:

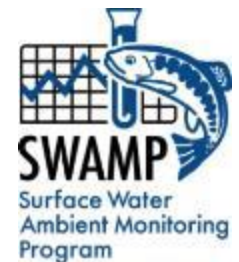
- ▶ Reviewing quality assurance project plans and providing recommendations.
- ▶ Directing callers to available resources such as web links or contact information.
- ▶ Addressing questions regarding SWAMP quality assurance (QA) and quality control (QC) comparability.
- ▶ Providing advice on how to address elements of a quality assurance project plan (QAPP).



Help Desk Database Services Included:

- ▶ Directing callers to available resources such as web links or contact information
- ▶ Addressing questions regarding database comparability requirements
- ▶ Distribution of Microsoft Excel data templates and formats
- ▶ Distribution of a Microsoft Access database shell
- ▶ Limited information and technical support if the interested party is organized in a group data management structure

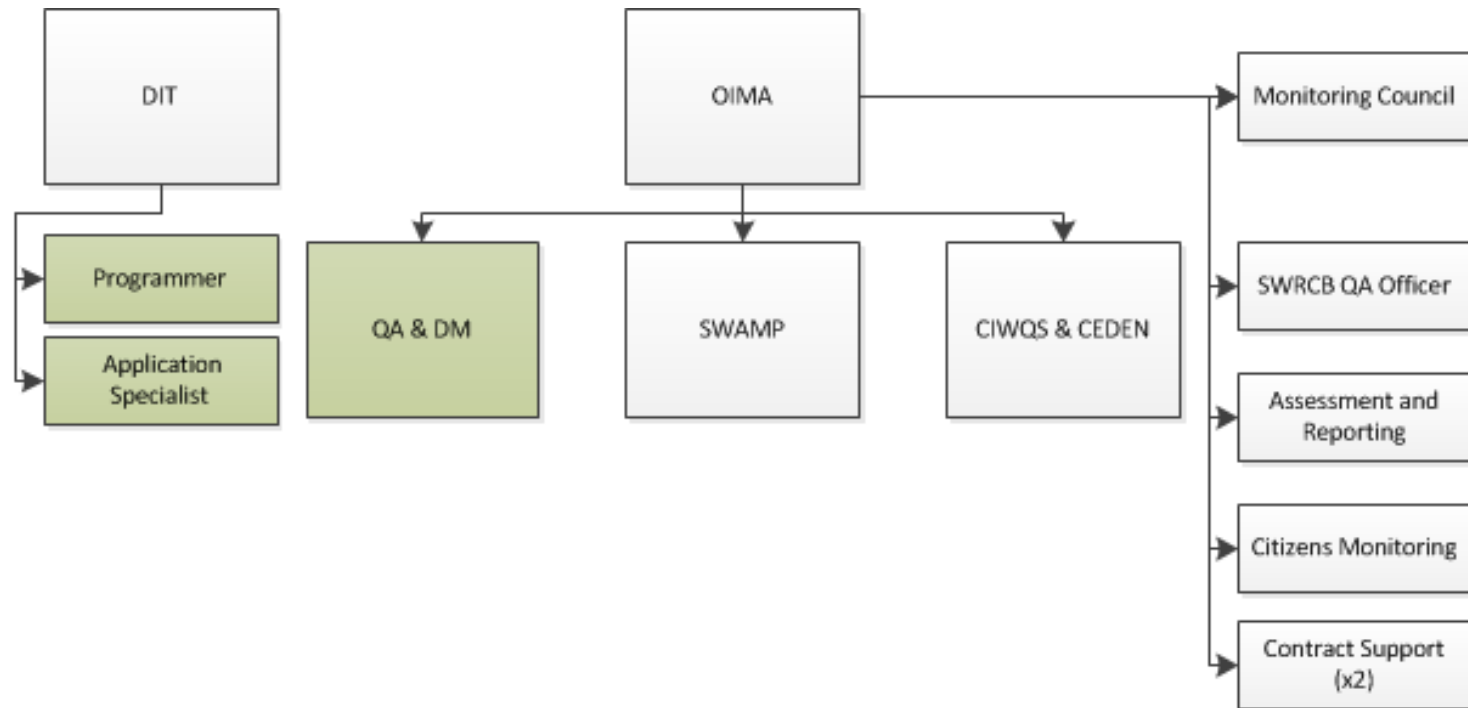
Now offered by CEDEN



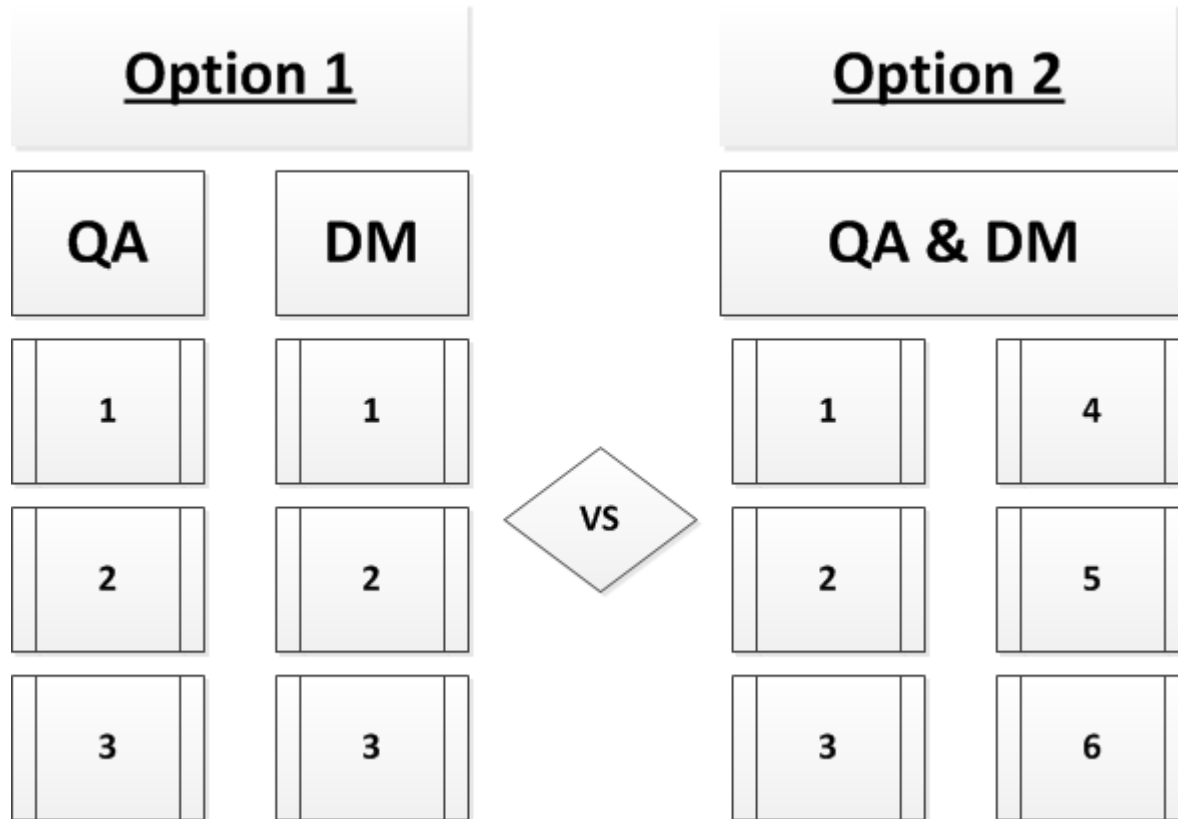
Changes

- ▶ Due to recent changes in state contracting, the SWAMP portion of those services are now being brought inside the Water Board as civil service positions.
- ▶ Budget Change Proposal added nine new positions to OIMA–SWRCB for those services.
 - Seven Positions: QA & DM Unit
 - One Supervisor
 - Six Staff
 - Two Positions: IT Support for SWAMP Database Programming & Applications

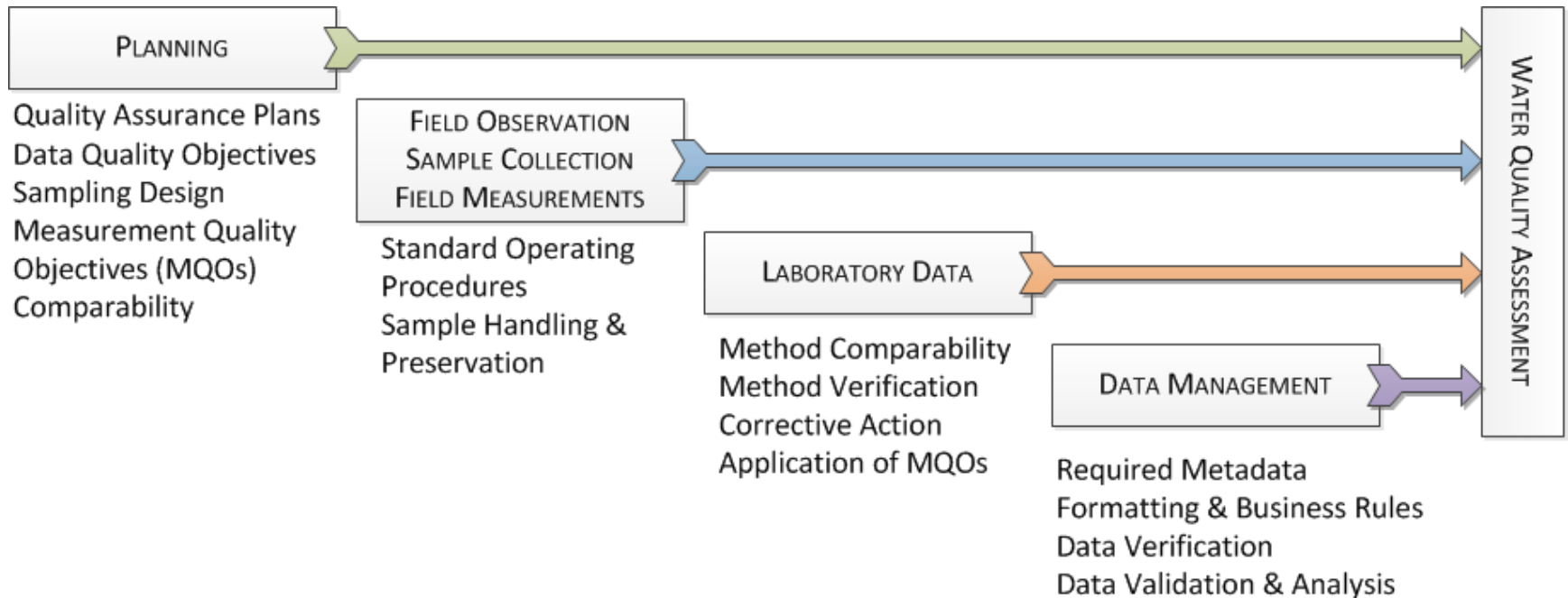
Office of Information Management and Analysis (OIMA)



New Unit Organization



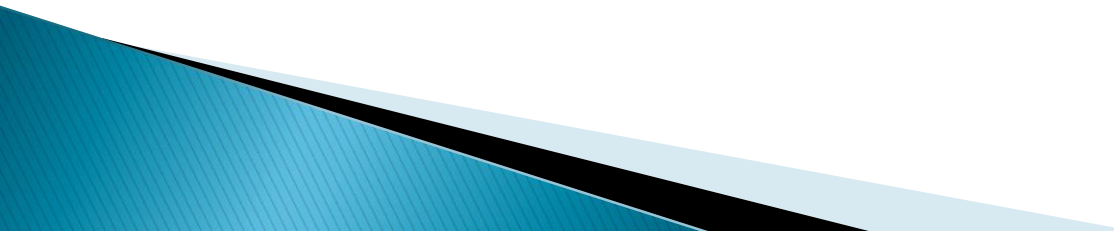
“Monitoring Lifespan” with QA/QC Elements



Variety of Data Types

Data Type	Quality Assurance Component?	Data Management Component?
Sample Collection	YES	YES
Field Measurements & Habitat	YES	YES
Chemistry	YES	YES
BMI Taxonomy	YES	YES
Algae Taxonomy	YES	YES
Tissue	YES	YES
Toxicity	YES	YES
Pathogens/Indicators	YES	YES
Deployable Sensor Data	YES	YES

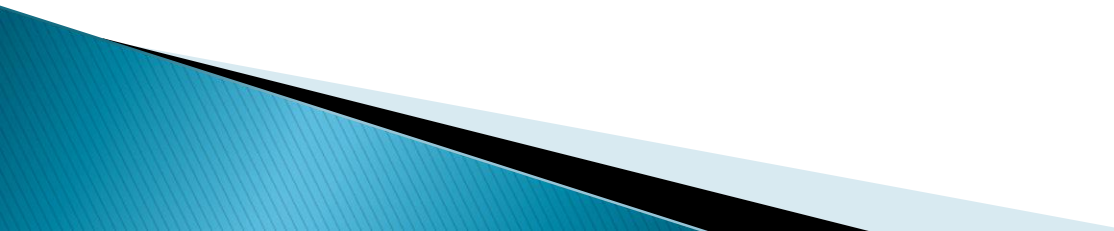
Organization Goals:

- ▶ Allow for Staff Specialization by Data Type
 - Utilize Staff Background, Education, and Strengths
 - Facilitate Coordination with Expert Groups & Contacts
 - ▶ Integration & Team Work on Core Functions
 - Shared Knowledge: Database Systems, QA/QC
 - Workload Distribution
 - ▶ Help Desk Support
 - Multiple Staff to Assist with Larger QA Concepts
 - “Whole Picture” Answers from Planning to Validation for Specialized Data Types.
- 

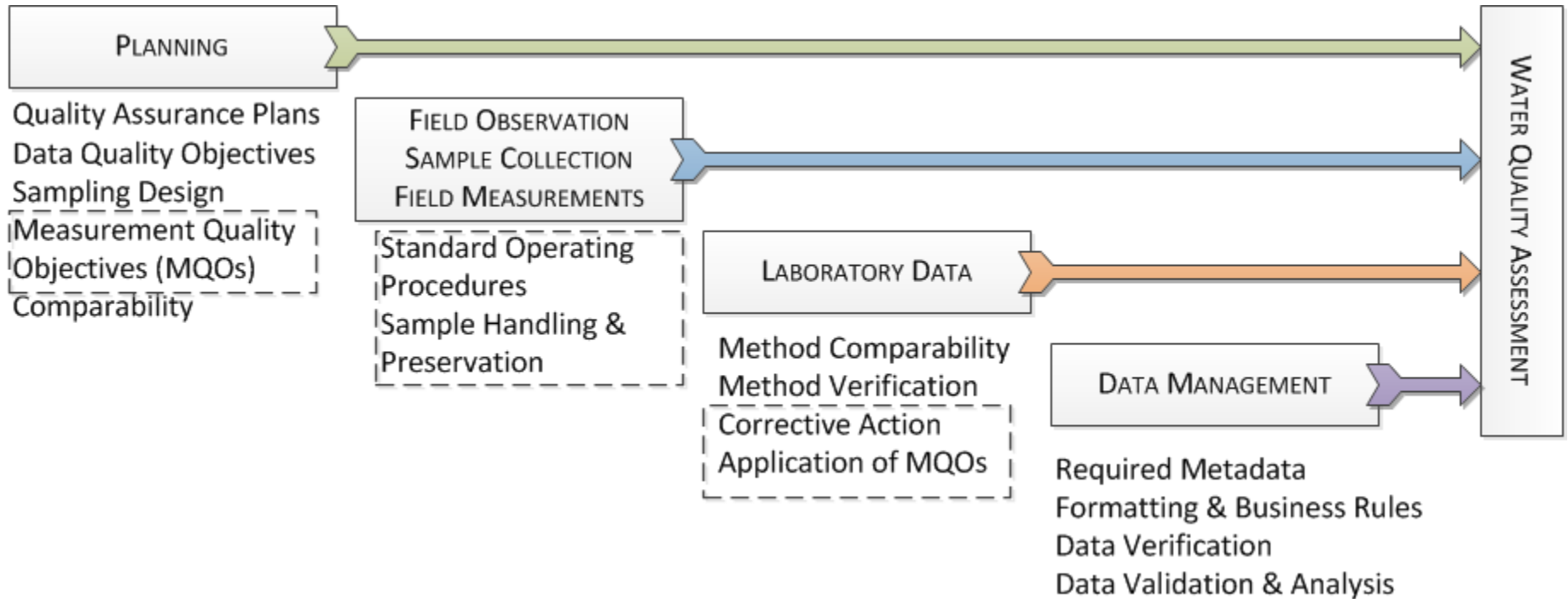
Quality Assurance & Data Management Unit

<p>Kim Pham Environmental Scientist Focus: Water & Sediment Chemistry</p>	<p>Marc Petta Environmental Scientist Focus: Physical Habitat, Deployable Sensors</p>
<p>Brian Ogg Environmental Scientist Focus: Toxicity, Bioaccumulation</p>	<p>Candice Heinz Environmental Scientist Focus: Algae Taxonomy</p>
<p>Marisa Van Dyke Environmental Scientist Focus: Cyanobacteria, Pathogens</p>	<p>Toni Marshall Environmental Scientist Focus: Benthic Macro Invertebrate Taxonomy</p>
<p>Melissa Morris Senior Environmental Scientist (Supervisor) SWAMP Quality Assurance Officer</p>	

Current Tasks & Goals

- ▶ Transition SWAMP Data Management Infrastructure In-House.
 - ▶ Revise the SWAMP Program Plan
 - Including a section on SWAMP Comparability.
 - ▶ Create a new SWAMP Comparability Help Desk Webpage
- 

Elements of SWAMP Comparability?



Currently Defined
Elements, 2014

Submit Surface Water
Data to CEDEN
www.CEDEN.org

For More Information:

- ▶ http://www.waterboards.ca.gov/water_issues/programs/swamp/

Melissa Morris

(916) – 341 – 5868

Melissa.Morris@waterboards.ca.gov

Go to SWAMP Contacts Page for
Staff Contact Information

