

C A L I F O R N I A



WATER

QUALITY

MONITORING COUNCIL

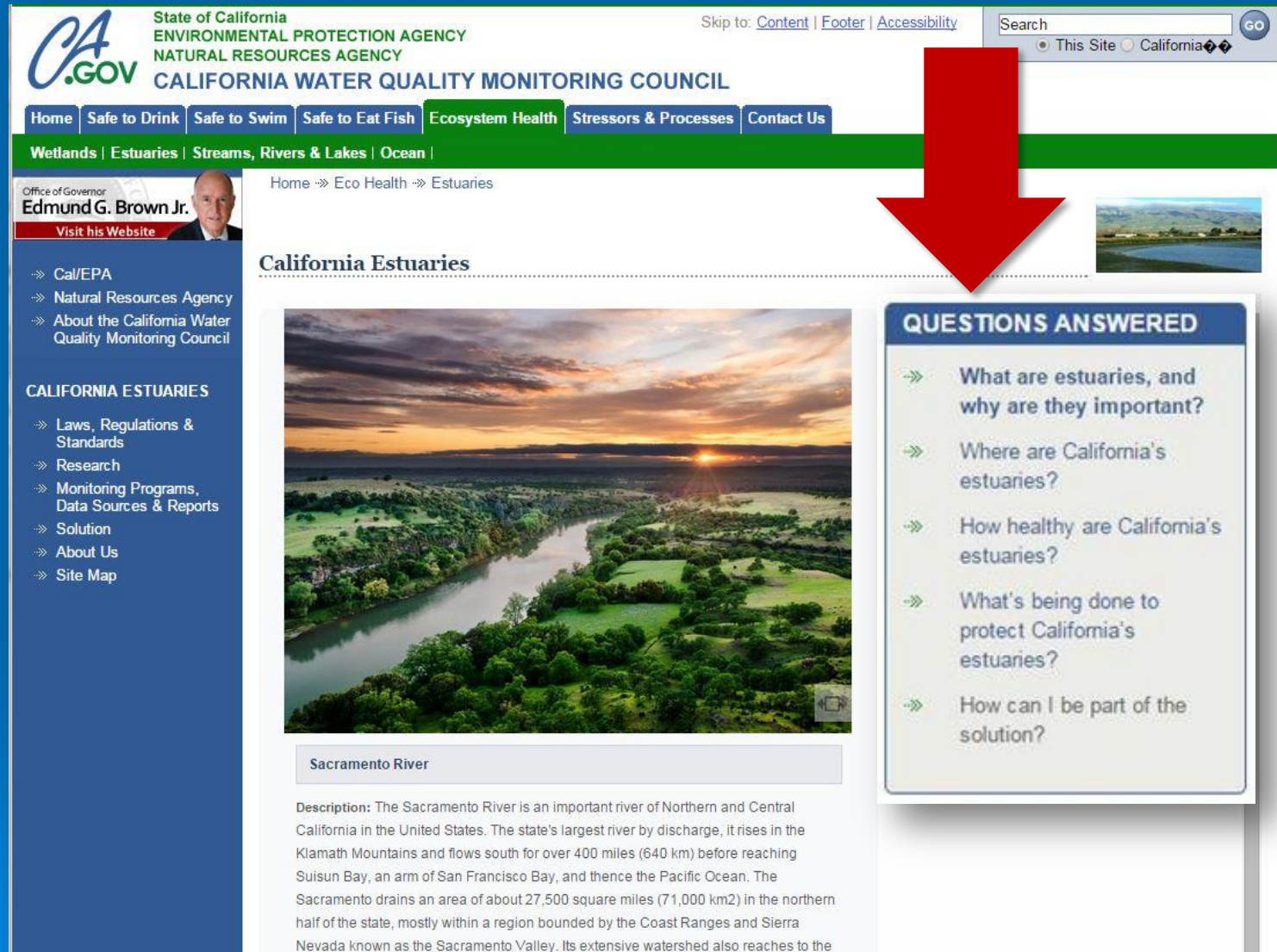
Proposed Changes to the California Estuary Portal

Kris Jones

Portal Launched in 2013

The screenshot displays the homepage of the California Water Quality Monitoring Council. At the top, the logo for CA.GOV is shown alongside the text: "State of California ENVIRONMENTAL PROTECTION AGENCY NATURAL RESOURCES AGENCY CALIFORNIA WATER QUALITY MONITORING COUNCIL". A search bar is located in the top right corner. Below the header is a navigation menu with links for Home, Safe to Drink, Safe to Swim, Safe to Eat Fish, Ecosystem Health, Stressors & Processes, and Contact Us. A secondary menu lists Wetlands, Estuaries, Streams, Rivers & Lakes, and Ocean. On the left side, there is a profile for the Office of Governor Edmund G. Brown Jr. and a list of links for CALIFORNIA ESTUARIES, including Laws, Regulations & Standards, Research, Monitoring Programs, Data Sources & Reports, Solution, About Us, and Site Map. The main content area features a breadcrumb trail: Home >> Eco Health >> Estuaries. A large image of the Sacramento River is shown, with a caption "Sacramento River" below it. To the right of the image is a "QUESTIONS ANSWERED" section with five bullet points: "What are estuaries, and why are they important?", "Where are California's estuaries?", "How healthy are California's estuaries?", "What's being done to protect California's estuaries?", and "How can I be part of the solution?". On the far right, a "Media Release" section is visible, titled "How Healthy Are California's Estuaries?". It includes contact information for Christopher Jones and Stephanie Fong, dated October 29, 2013. The release text discusses the My Water Quality website and the California Estuaries Portal, highlighting the agency's commitment to providing timely information and facilitating research efforts.

Question-Driven Navigation



The screenshot shows the website for the California Water Quality Monitoring Council. At the top, there is a search bar and navigation links for Content, Footer, and Accessibility. The main navigation menu includes Home, Safe to Drink, Safe to Swim, Safe to Eat Fish, Ecosystem Health, Stressors & Processes, and Contact Us. A breadcrumb trail reads: Home → Eco Health → Estuaries. A large red arrow points from the top right towards the 'QUESTIONS ANSWERED' sidebar.

QUESTIONS ANSWERED

- What are estuaries, and why are they important?
- Where are California's estuaries?
- How healthy are California's estuaries?
- What's being done to protect California's estuaries?
- How can I be part of the solution?

Sacramento River

Description: The Sacramento River is an important river of Northern and Central California in the United States. The state's largest river by discharge, it rises in the Klamath Mountains and flows south for over 400 miles (640 km) before reaching Suisun Bay, an arm of San Francisco Bay, and thence the Pacific Ocean. The Sacramento drains an area of about 27,500 square miles (71,000 km²) in the northern half of the state, mostly within a region bounded by the Coast Ranges and Sierra Nevada known as the Sacramento Valley. Its extensive watershed also reaches to the

New Look and Feel?

- 💧 Request made in September 2014
- 💧 Monitoring Council approval received
 - 💧 *As long as the portal maintains the question-driven approach for navigation*
- 💧 Limitation to consider—State Water Board's use of an older state webpage style template.

Portal Feedback

- 💧 Current portal format looks out-of-date
- 💧 Navigation difficult using question-driven approach
- 💧 Difficult to add content using current format
- 💧 Current portal focuses too much on public user



Sacramento - San Joaquin Delta

ABOUT US

What is the Estuary Monitoring Workgroup?



The California Estuary Monitoring Workgroup, is tasked with identifying key questions to assess the

Ecological health of California's Estuaries, the data and methods available and needed to address the questions, and the methods to access these data. [Learn more](#)

STEWARDSHIP

What is being done to protect California's Estuaries?



It is every citizen's responsibility acting as a steward in protecting the environment. The Sacramento

Regional County Sanitation District is in the process of purchasing and restoring habitat surrounding the their treatment plant....

[Learn more](#)

WATER NEWS

What are headlines in California's water news?



A new weather satellite was launched (February 27) from Japan aimed at providing high-tech, three

Dimensional snowfall around the earth. The Global Precipitation Measurements....

[Learn more](#)

HIGHLIGHTS

REPORTING

What is the Water Quality Conditions Report?

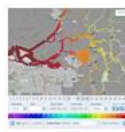


This report summarizes the results of water quality monitoring and special studies conducted by the

Environmental Monitoring Program within the Sacramento-San Joaquin Delta and Suisun Marsh, as mandated by Water Rights Decision 1641 (D-1641). [Learn more](#)

MANAGEMENT TOOLS

How is salinity being managed during the drought?



Building data stories to communicate complicated topics. Learn about Salinity, why it is important and the

Management options available to the resource agencies. See real time conductivity conditions, visualize the salt field and spatially view.... [Learn more](#)

RESEARCH

How are tagged fish being used in the Delta?

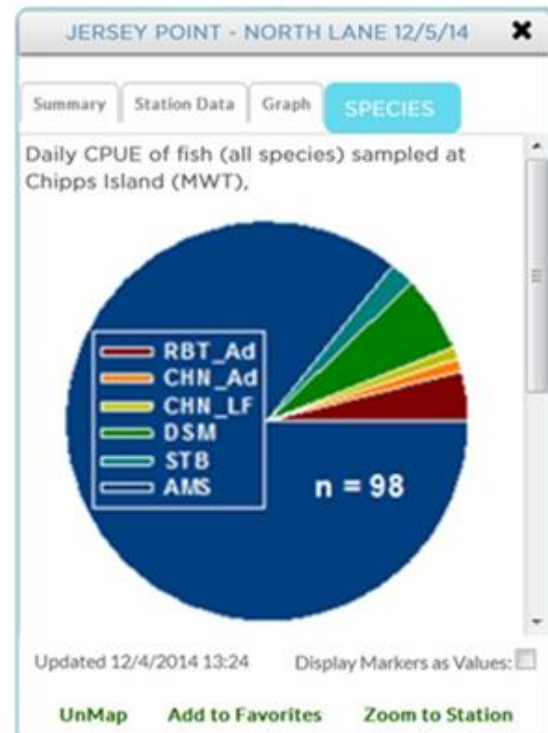
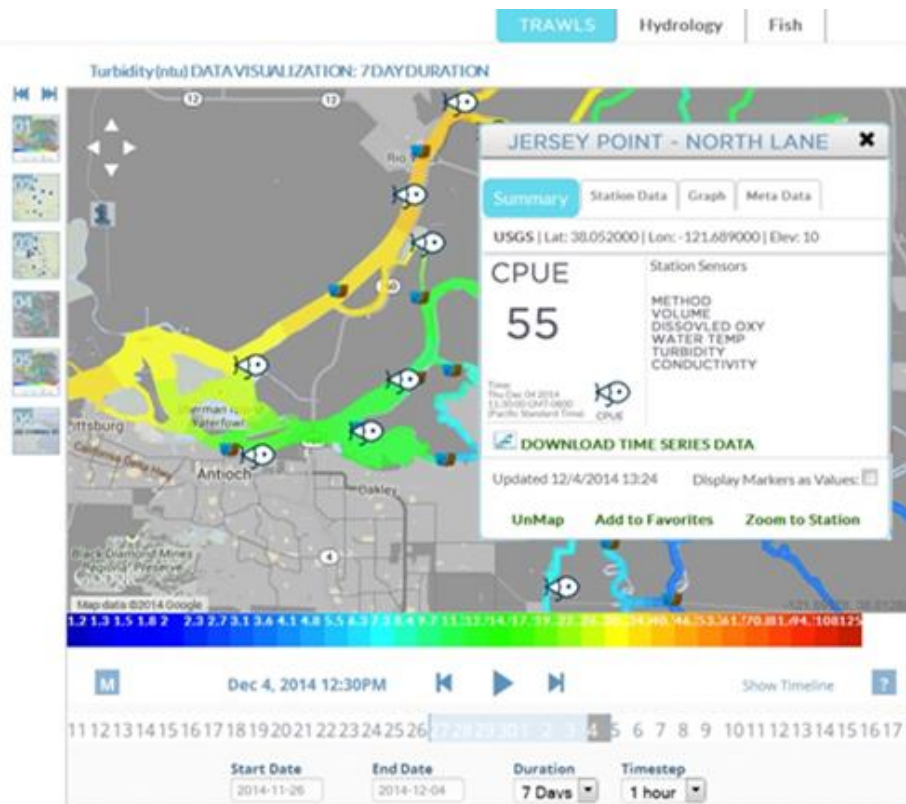


In support of various fish tracking studies by the Army Corp, USGS, MWD, DWR and participating

Agencies for management of receiver network ops and visualization of raw processed.... [Learn more](#)

- **San Francisco Estuary**
 - [Delta Juvenile Fish Monitoring Program](#)
 - Water Quality
 - Restoration Tracking
- **Santa Monica Bay**
- **Elkhorn Slough**
- **Morro Bay Estuary**
- **Smith River Estuary**
- **Klamath River Estuary**
- **Mad River Estuary**
- **Noyo River Estuary**
- **Eel River Estuary**
- **Russian River Estuary**

Delta Juvenile Fish Monitoring Program



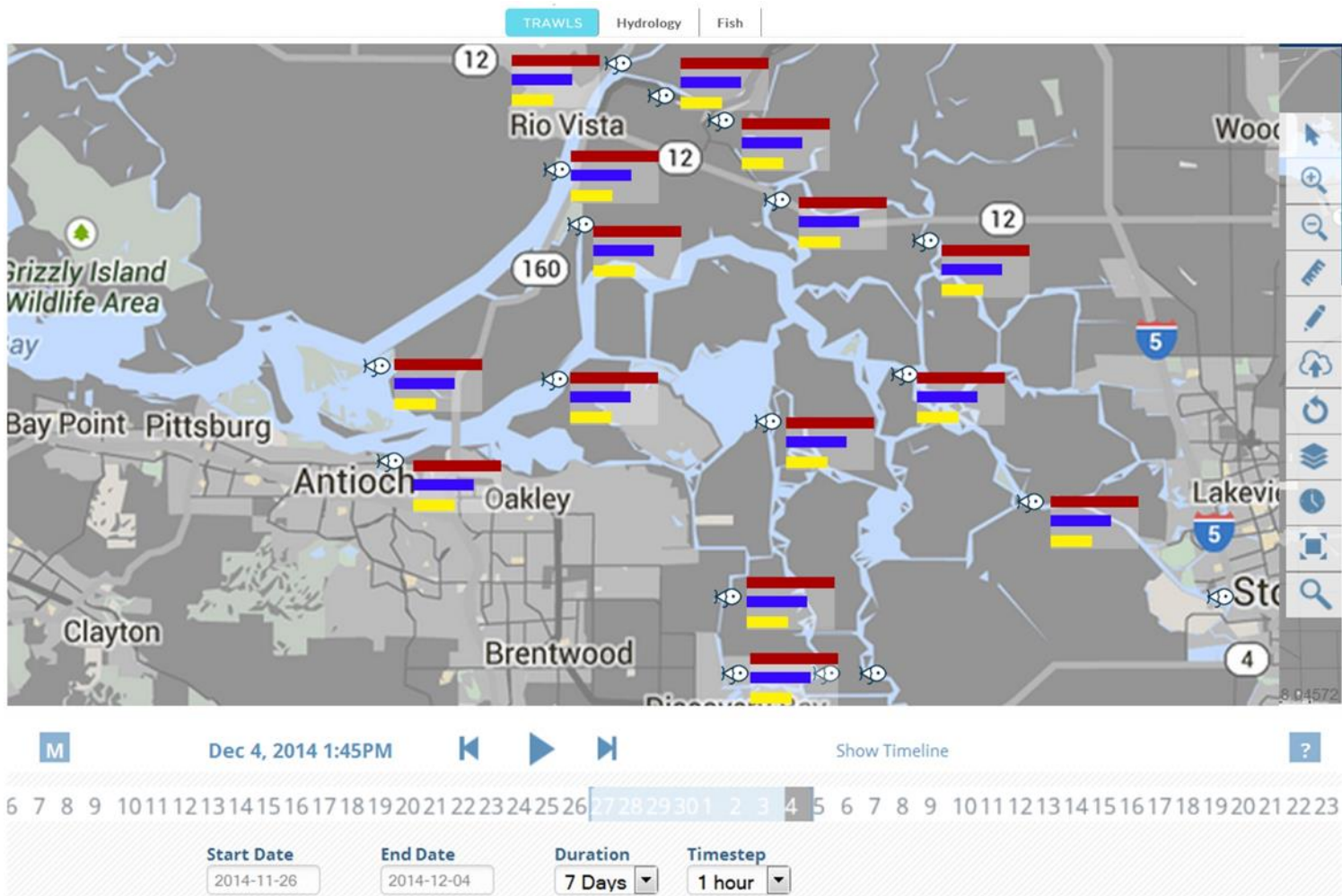
AVERAGE CATCHES ACROSS THE FULL EFFORT FOR 12/5/14

STATION	CATCH
American River	
Antioch Dunes	
B&W Marina	
Berkeley (Frontage Rd)	
Big Beach	
Brannan Island	
China Camp	
Clarksburg	
Colusa St. Park	
Cruiser Haven	
Dad's Point	
Discovery Park	
Elkhorn	
Garcia Bend	
Georgiana Slough	
Isleton	



Sacramento - San Joaquin Delta

Delta Juvenile Fish Monitoring Program

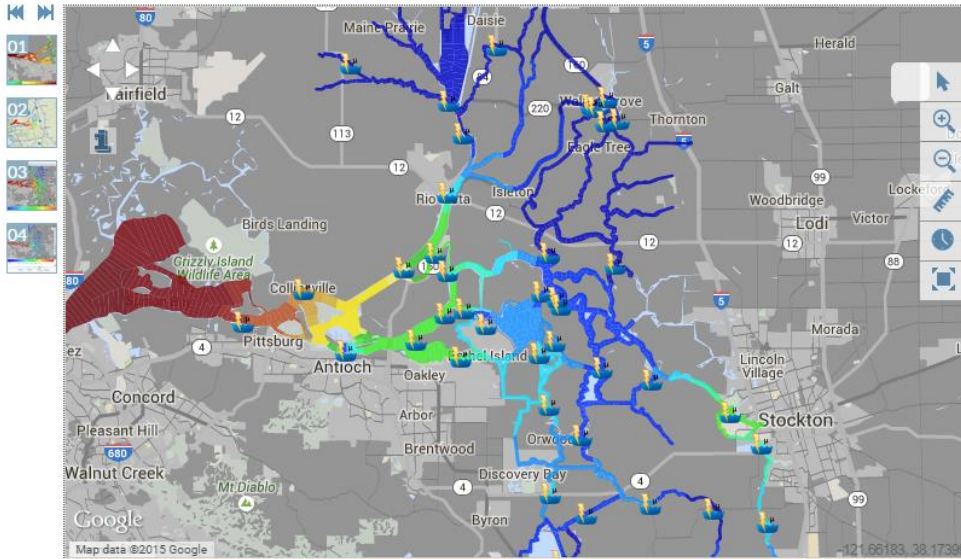




Sacramento - San Joaquin Delta

Water Quality

Electrical Conductivity (micros) Data Visualization - Last 7 days



SALINITY MAP STORY: ELECTRICAL CONDUCTIVITY (MICRO S) DATA VISUALIZATION - LAST 7 DAYS

Salinity Conditions Visualization. Data always displays last 7-Days.



Jul 2, 2015 2:30PM

 Timestep: 1 hour

9 10 11 12 13 14 15 16 17 18 19 20 21 22 23 24 25 26 27 28 29 30 1 2 3 4 5 6 7 8 9 10 11 12 13 14 15 16

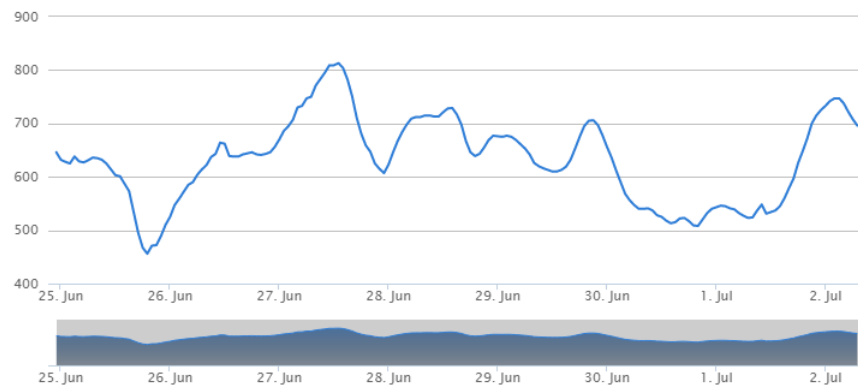


Graphs

Data: ELECTRI Location: SJR: SAN Graph: Detail Overlay

ELECTRICAL CONDUCTIVITY MICRO S SJR

Select an area by dragging across the lower chart



OPERATIONS SUMMARY JUL 02, 2015

Summary | Graphs

SCHEDULED EXPORTS for Today

Clifton Court Inflow	300 cfs
Jones Pumping Plant	300 cfs

ESTIMATED HYDROLOGY

Total Delta Inflow	~ 7,902 cfs
Sacramento River	6,533 cfs
San Joaquin River	135 cfs

DELTA OPERATIONS

Delta Conditions	Balanced
Delta X Channel	100%
% of Inflow Diverted	8.4% (3-day avg)
Outflow	3,100 cfs
X2 Position	> 81 km
Source Data	View deltaops.pdf

RESERVOIR CONDITIONS JUL 02, 2015

Summary | Graphs

Reservoir Name	Capacity (AF)	Storage (AF)	Outflow (CFS)
Castaic	325000	111382	----
Don Pedro	2030000	752410	----
Folsom	977000	434437	2897
Keswick	23772	21392	7095
MC Clure (Exchequer)	1024600	128228	1043
Millerton (Friant)	520500	179858	615
New Hogan	317000	50862	419
Nimbus	9000	8162	2866
Oroville	3537577	1386462	5345
Pine Flat	1000000	266027	995
Pyramid	180000	169501	----
San Luis	2041000	801186	----
Shasta	4552000	2193789	5034
Trinity Lake	2447650	926833	1765

RESERVOIR IMAGE VIEWER



Sacramento - San Joaquin Delta

Restoration Tracking

Bay/Delta : [Map](#) | [Projects](#) | [Summaries](#)

Layers ▾ Legends ▾ Basemap ▾ Overlays ▾

Wetland Projects

Info on this data

Transparency

Site Status

- Construction Completed
- Construction In Progress
- Construction Planned
- Approximate Boundary

At this location

Wetland Restoration Projects

Bahia Wetland Restoration

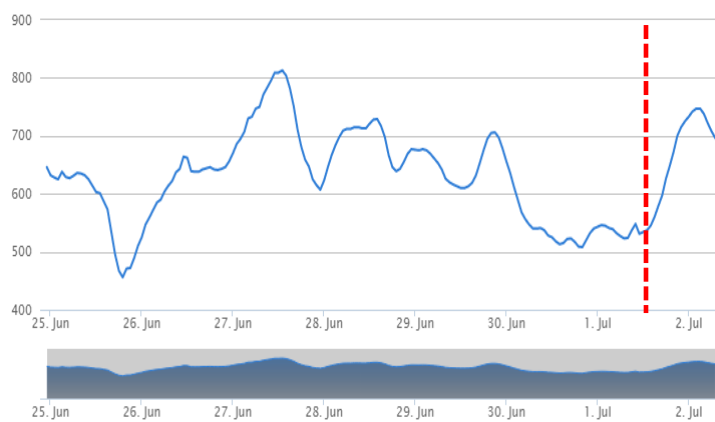
Type: not recorded
 Total Area: 674.3 acres
 Number of sites in project: 2

[Project Details](#)

Monitoring Data

Data: ELECTRI ▾ Location: SJR: SAN ▾ Graph: Detail ▾ Overlay ▾

ZOOPLANKTON BIOMASS



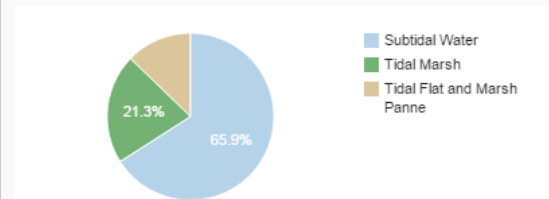
Landscape Summary

User Defined Region [Print Report](#)

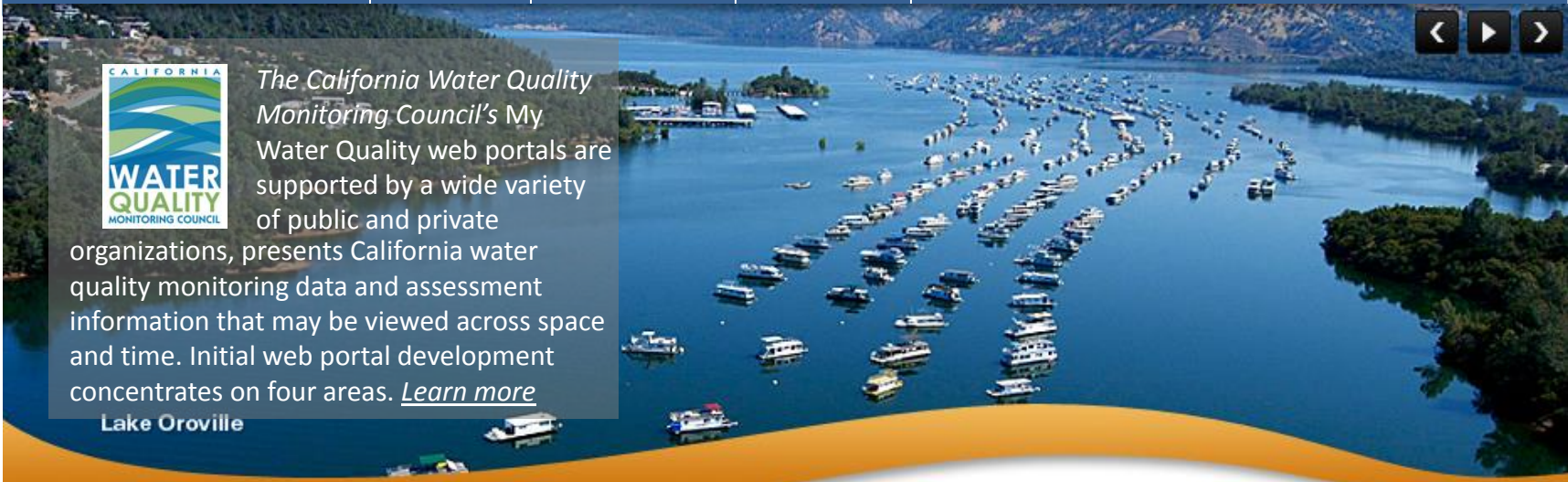
Total Profile Area: 830.4 acres or 1.3 miles²

Abundance and Diversity of Existing Aquatic Resources based on California Aquatic Resource Inventory (CARI)

Marine and Estuarine Resources: 461 acres / 0.7 miles²



Palustrine Resources: 9 acres / 0 miles²



The California Water Quality Monitoring Council's My Water Quality web portals are supported by a wide variety of public and private organizations, presents California water quality monitoring data and assessment information that may be viewed across space and time. Initial web portal development concentrates on four areas. [Learn more](#)

Lake Oroville

Is Our Water Safe to Drink?



Safe drinking water depends on a variety of

chemical and biological factors regulated by a number of local, state, and federal agencies. [\[Future Portal\]](#)

Is It Safe to Swim in Our Waters?



Swimming safety of our waters is linked to the

levels of pathogens that have the potential to cause disease. [Learn more](#)

Is it Safe to Eat Fish and Shellfish From Our Waters?



Aquatic organisms are able to accumulate

certain pollutants from the water in which they live, sometimes reaching levels that could harm consumers. [Learn more](#)

Are Our Aquatic Ecosystems Healthy?



The health of fish and other aquatic organisms and

communities depends on the chemical, physical, and biological quality of the waters in which they live. [Learn more](#)

What Stressors and Processes Affect Our Water Quality?



Beneficial uses of our waters are affected by emerging

Contaminants, invasive species, trash, global warming, acidification, pollutant loads, and flow. [Learn more](#)

About Us



The Monitoring Council seeks to provide multiple perspectives on water quality information and to highlight existing data gaps and inconsistencies in data collection and interpretation. [Learn more](#)



The Estuary Monitoring Workgroup has released the latest version of DWR's Water Quality Conditions Report.

Check out the new and improved interactive report, with increased access to real-time data from the Interagency Ecological Program's Environmental Monitoring Program. [Learn more](#)

Sacramento - San Joaquin Delta

Is Our Water Safe to Drink?



Safe drinking water depends on a variety of

chemical and biological factors regulated by a number of local, state, and federal agencies. [\[Future Portal\]](#)

Is It Safe to Swim in Our Waters?



Swimming safety of our waters is linked to the

levels of pathogens that have the potential to cause disease. [Learn more](#)

Is it Safe to Eat Fish and Shellfish From Our Waters?



Aquatic organisms are able to accumulate

certain pollutants from the water in which they live, sometimes reaching levels that could harm consumers. [Learn more](#)

Are Our Aquatic Ecosystems Healthy?



The health of fish and other aquatic organisms and

communities depends on the chemical, physical, and biological quality of the waters in which they live. [Learn more](#)

What Stressors and Processes Affect Our Water Quality?



Beneficial uses of our waters are affected by emerging

Contaminants, invasive species, trash, global warming, acidification, pollutant loads, and flow. [Learn more](#)

About Us



The Monitoring Council seeks to provide multiple perspectives on water quality information and to highlight existing data gaps and inconsistencies in data collection and interpretation. [Learn more](#)

- [My Water Quality Home](#)
- [Is Our Water Safe to Drink?](#)
- [Is It Safe to Swim in Our Waters?](#)
- [Is it Safe to Eat Fish and Shellfish From Our Waters?](#)
- [Are Our Aquatic Ecosystems Healthy?](#)
 - [Wetlands](#)
 - [Estuaries](#)
 - [Watersheds](#)
 - [Ocean and Coastal](#)
- [What Stressors and Processes Affect Our Water Quality?](#)

Is Our Water Safe to Drink?



Safe drinking water depends on a variety of

chemical and biological factors regulated by a number of local, state, and federal agencies. [\[Future Portal\]](#)

Is It Safe to Swim in Our Waters?



Swimming safety of our waters is linked to the

levels of pathogens that have the potential to cause disease. [Learn more](#)

Is it Safe to Eat Fish and Shellfish From Our Waters?



Aquatic organisms are able to accumulate

certain pollutants from the water in which they live, sometimes reaching levels that could harm consumers. [Learn more](#)

Are Our Aquatic Ecosystems Healthy?



The health of fish and other aquatic organisms and

communities depends on the chemical, physical, and biological quality of the waters in which they live. [Learn more](#)

What Stressors and Processes Affect Our Water Quality?



Beneficial uses of our waters are affected by emerging

contaminants, invasive species, trash, global warming, acidification, pollutant loads, and flow. [Learn more](#)

About Us



The Monitoring Council seeks to provide multiple perspectives on water quality information and to highlight existing data gaps and inconsistencies in data collection and interpretation. [Learn more](#)