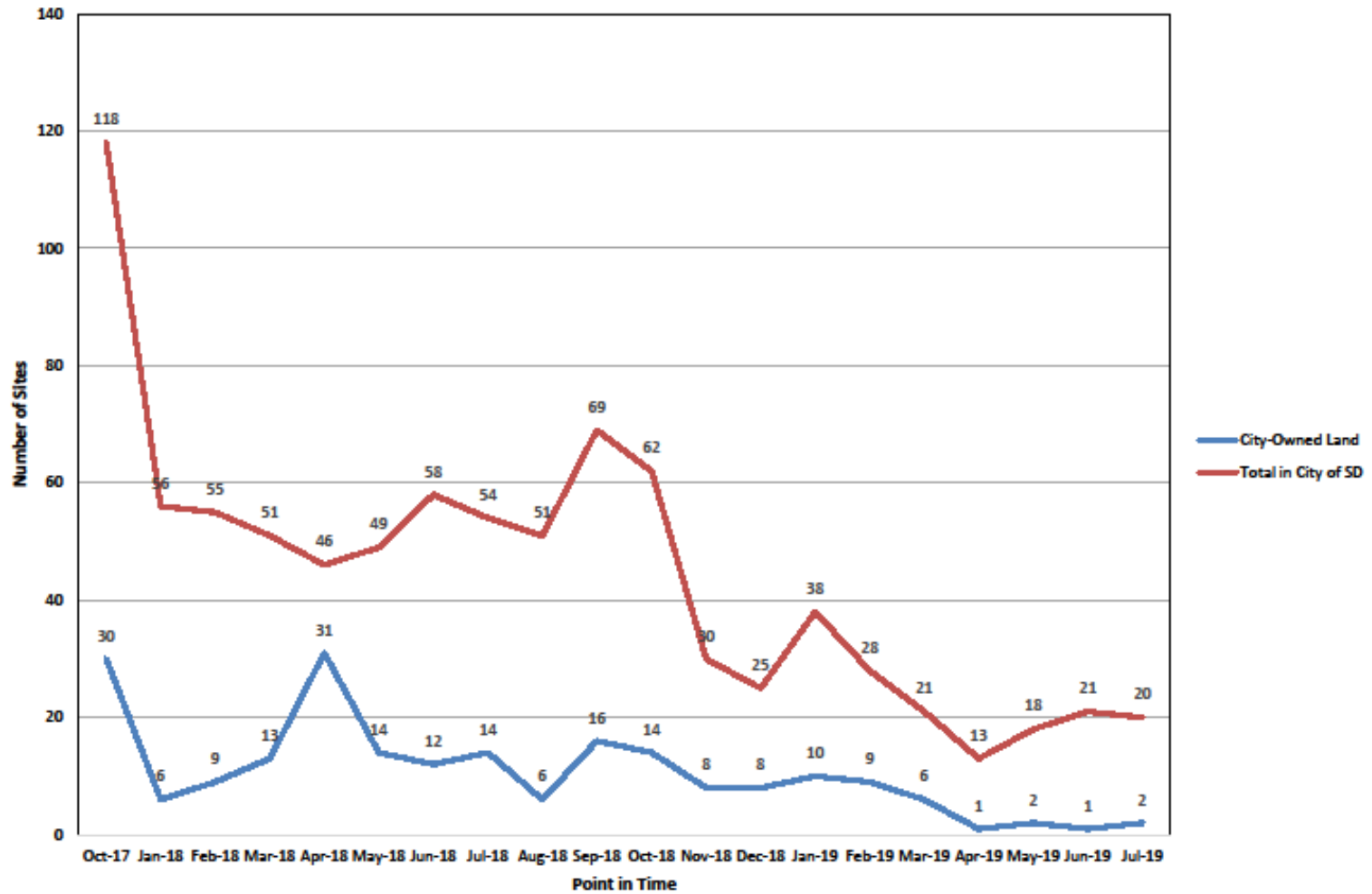


Safe to Swim Network







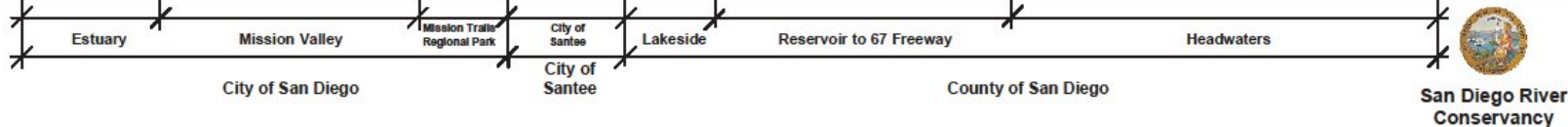
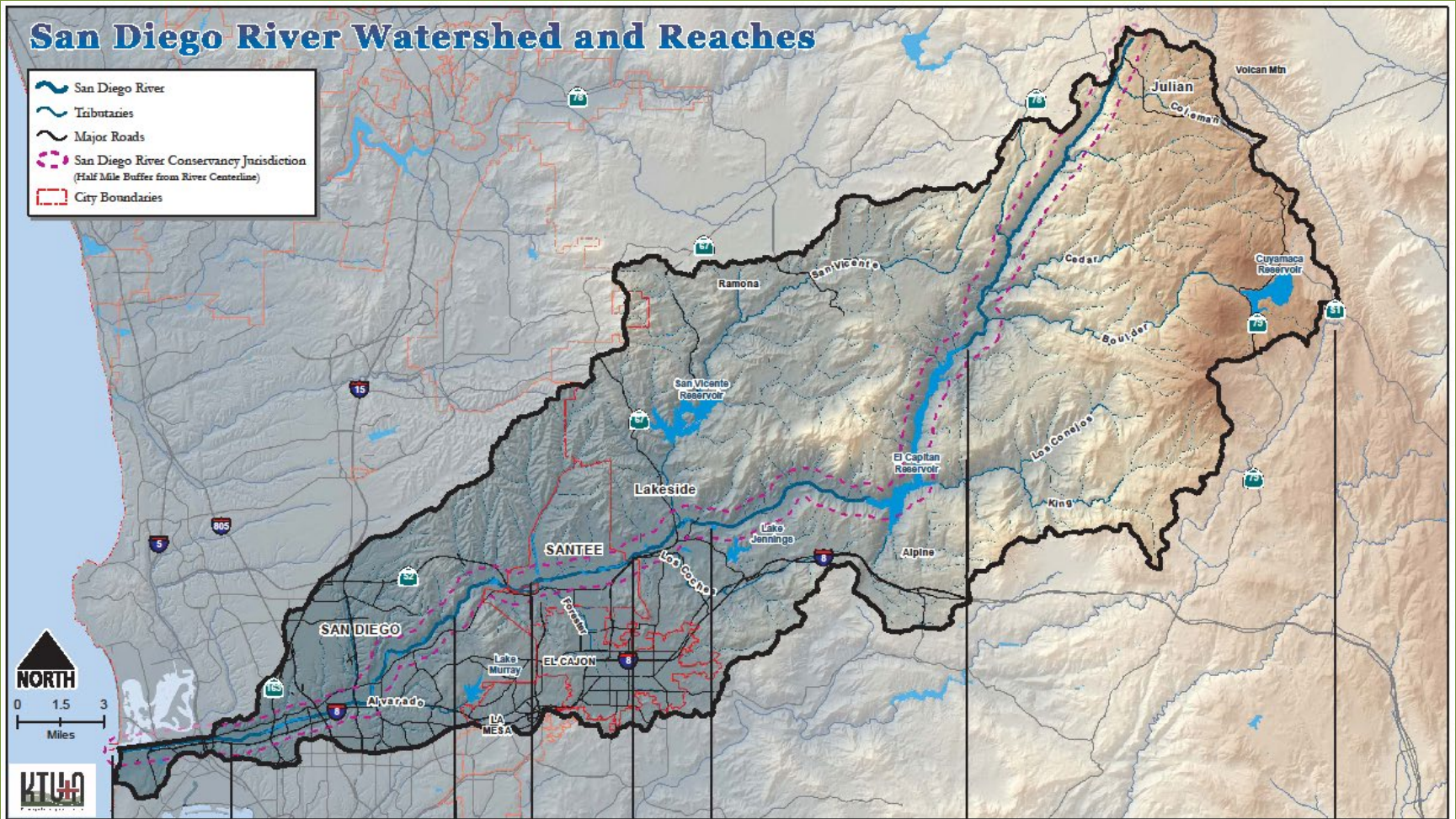
Presentation by Rob Hutsel
President and CEO

Active Encampments



San Diego River Watershed and Reaches

-  San Diego River
-  Tributaries
-  Major Roads
-  San Diego River Conservancy Jurisdiction
(Half Mile Buffer from River Centerline)
-  City Boundaries



Connect. Create. Conserve.



Mission Valley



Connect. Create. Conserve.





Multi-Year Volunteer-Based Program



Connect. Create. Conserve.





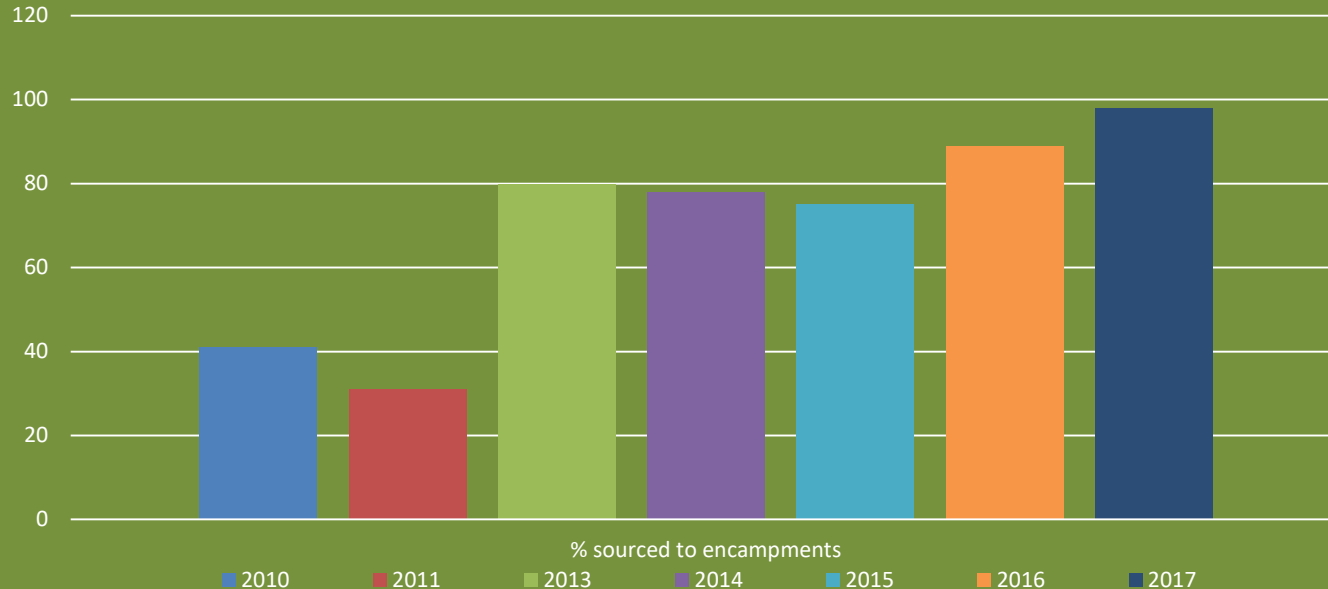
In October 2017 we got some terrible news.

Connect. Create. Conserve.



2017 Annual Survey Results

- Nearly 100% of trash now sourced to encampments
- 84% increase in number of encampments along the River in one year.



Connect. Create. Conserve.



Problem:

We estimated nearly one million pounds of trash is annually deposited in the riverbed by encampments along the River



Connect. Create. Conserve.



Hepatitis A Outbreak

- 20 deaths
- 401 Hospitalizations
- Significant percentage homeless



Media Focus on the River

- “Tijuana Sewage is not Fueling the Hep A Outbreak, but the San Diego River might be”
 - » 9/22/17
 - » Voice of San Diego



Heightened Media Attention

- “Many worry trash will pile up around the San Diego River after a local non-profit stops cleanups...”
 - 10/10/2017, NBC San Diego
- “Water board records show studies tying health danger to homeless camps went unaddressed for years”
 - 10/09/2017, Union Tribune



STRATEGY

- Increase data collection
- Advocate for resources and collaborate more
- Increase clean-ups
- Willing to be a visible leader on a largely social issue



Collecting Critical Data: Community Science



**Regular Focused Surveys:
2-3 per week**

Annual Point in Time Count

Annual River Blitz

**Protocol-Based and Reliable
Developed Phone-based App**

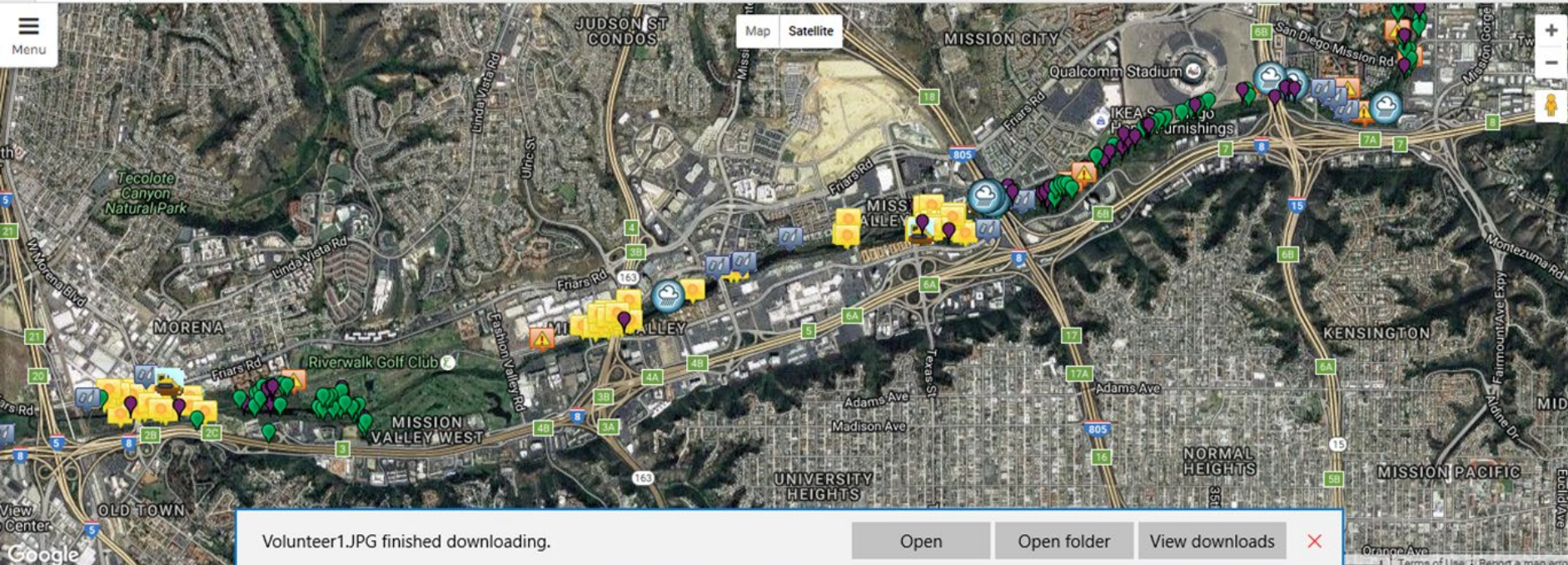
**Goal: Problem Areas Surveyed
Every 2 Weeks or Better**

Public Data Portal

San Diego River Park Foundation

Map List Chart

SHOW SITE INFORMATION



www.immapler.com/sandiegorivertrash

Connect. Create. Conserve.



San Diego River Trash C X +

immapper.com/sandiegorivertrash/

San Diego River Trash Cleanup 2019

Powered by Mappler technology

Log in Mapper.net

Map List Chart

SHOW SITE INFO Zoom in

Filter

- My location
- Map center
- Find Address

Category

Density map settings

- Select all
- Site No Longer Present - July 2018 to present (624)
- Inactive Encampment (123)
- Encampment Trash (42)
- Stormwater Debris (127)
- Litter (22)
- Dumping (36)
- Special Removal Needed (10)
- Access Issues or Not Surveyed (3)

Map Satellite

Map data ©2019 Google Imagery ©2019 CNES / Airbus, DigitalGlobe, Sanborn, U.S. Geological Survey, USDA Farm Service Agency 100 m L Terms of Use

8:28 AM 3/7/2019

DATA used to coordinate cleanups. Shared with multiple partners and support research. Used by landowners and agencies.

Connect. Create. Conserve.



San Diego River Trash C x + v

immapper.com/sandiegorivertrash/

San Diego River Trash Cleanup 2019

Powered by Mapper technology

Log in Mapper.net

Map List Chart

Filter

My location Map center Find Address


Category

Density map settings

- Select all
- Site No Longer Present - July 2018 to present (624)
- Inactive Encampment (123)
- Encampment Trash (42)
- Stormwater Debris (127)
- Litter (22)
- Dumping (36)
- Special Removal Needed (10)
- Access Issues or Not Surveyed (3)

Item details

Blue Suitcase, Luggage Carrier



Site Name : Blue Suitcase, Luggage Carrier

Category : Inactive Encampment

Bags of Trash : 35

Comments : Close to the other two sites, big dump site. Site still present 11/6/18.

Date : 2018-10-06

Time : 10:44:42

SHOW SITE INFORMATION

San Diego River

Club River Run

California

Map data ©2019 Google Imagery ©2019, DigitalGlobe, Sanborn, U.S. Geological Survey, USDA Farm Service Agency 20 m

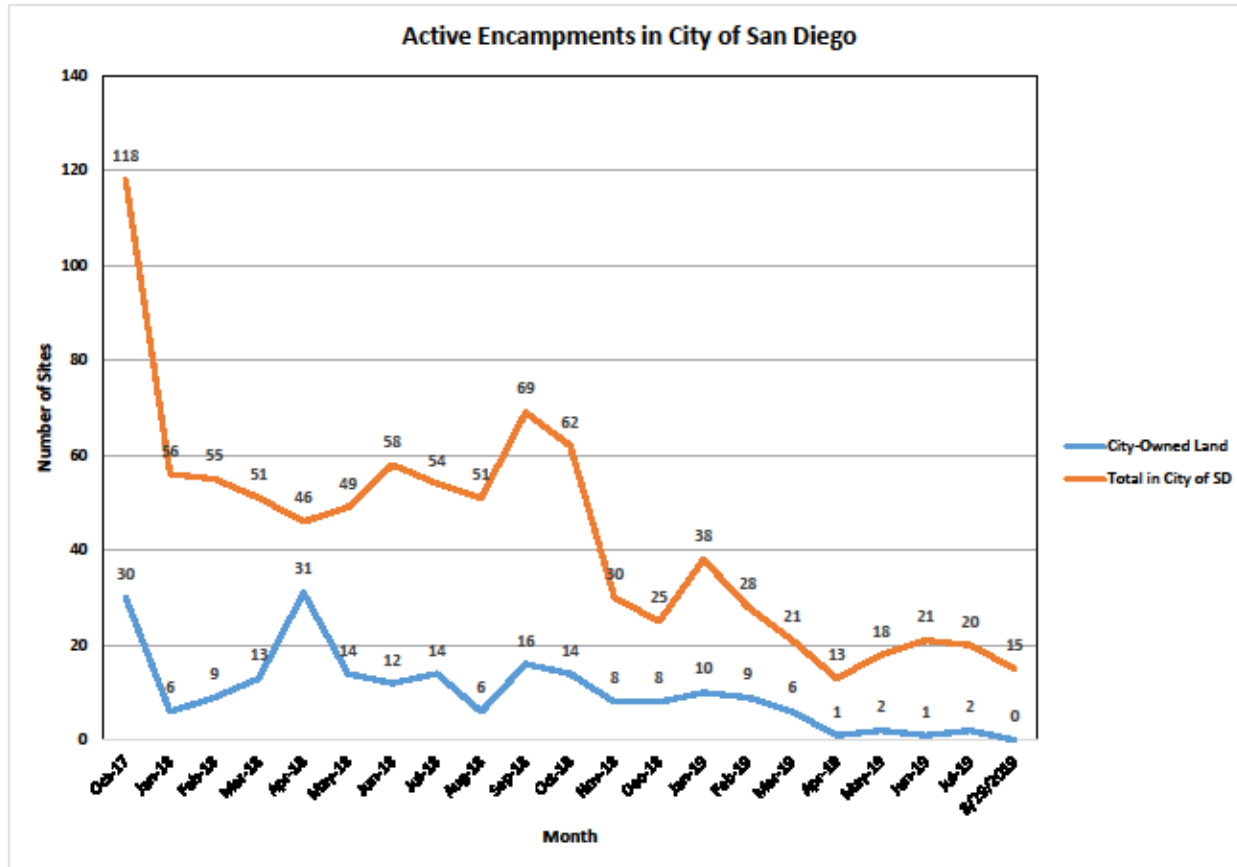
Type here to search

8:29 AM 3/7/2019

<http://immapper.com/sandiegorivertrash/>

Connect. Create. Conserve.





August 29, 2019
 Prepared by The San Diego River Park Foundation



Over the years, we have organized volunteers to remove close to 3 million pounds of trash from in and along the River.

The River is healthier and the public is safer.



Connect. Create. Conserve.



Going Forward...

1. We need to better understand the risks of latrine sites in an alluvial floodplain
2. Private property owners cannot address encampments by themselves
3. Ongoing coordination of key stakeholders is vital
4. Encampments continue to generate trash, and therefore, a sustained program is needed
5. Financial Support of Nonprofit Coordination Efforts Can Be Highly Effective



Our Amazing Volunteers



Rob Hutsel
rob@sandiegoriver.org
619-297-7380

Connect. Create. Conserve.

