

# EcoAtlas

## Advanced Performance Measures Reporting



November 6, 2018



**SFEI**

**AQUATIC  
SCIENCE  
CENTER**

# Advanced Performance Measures Reporting



# Project Objectives

- » **Integrate project data** and performance measures between EcoAtlas and Delta View
- » **Develop new capabilities** to improve performance measures reporting for wetland restoration projects



**SFEI**

**AQUATIC  
SCIENCE  
CENTER**

# Tracking Performance Measures

- » **Met with agency staff** to discuss performance measure reporting needs
- » **Determined information needed** to enhance performance measures tracking and reporting
- » **Modify Project Tracker** to better track information and EcoAtlas to dynamically report on performance measures



**SFEI**

**AQUATIC  
SCIENCE  
CENTER**

# Reporting Options



# Project Information Page

[ABOUT](#)[CONTACT](#)[DATA](#)[PROJECT TRACKER](#)[REGIONS ▾](#)[WEB SERVICES/API](#)[PARTNERS](#)


## Related CRAM Assessments

Visit Date	Version	Site Name	Wetland Type	Index Score
No Data				

## Performance Criteria

Status	Details	Evaluation Date
More than 50% criteria met	testing 2	2016-11-22
Less than 50% criteria met	testing	2015-01-01

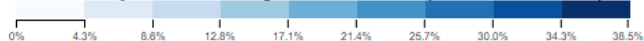
## Performance Measures

Plan Name	Plan Goal	Performance Measure	Measure Value	Status	Evaluation Date
Delta Plan	More Reliable Water Supply	Increased acre-feet of water protected or conserved per year to increase flow in periods of limited water supply	55 / 99 acres  56%	in-progress/partially achieved	2012-12-12

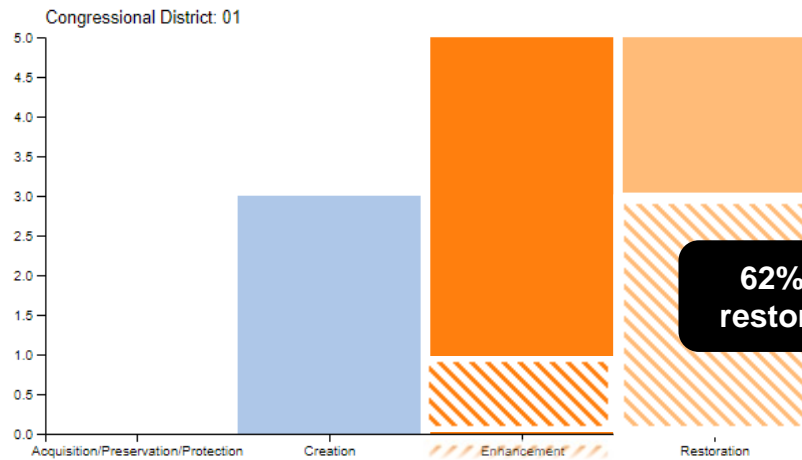
View:  Congressional Districts  Hydrologic Regions  Regional Boards



Habitat Project Acres in Congressional Districts (as % of total District)



### Target and Actual Project Acres by Activity Type:



62% of target restoration goal

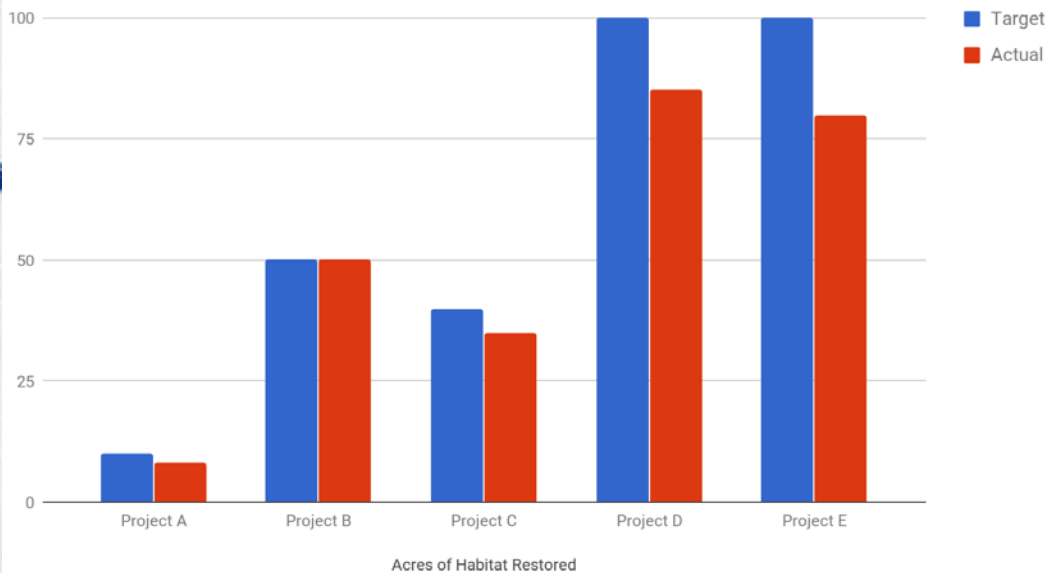


View Congressional Districts Hydrologic Regions Regional Boards

Acres by Activity Type Grouped Stacked



Target and Actual



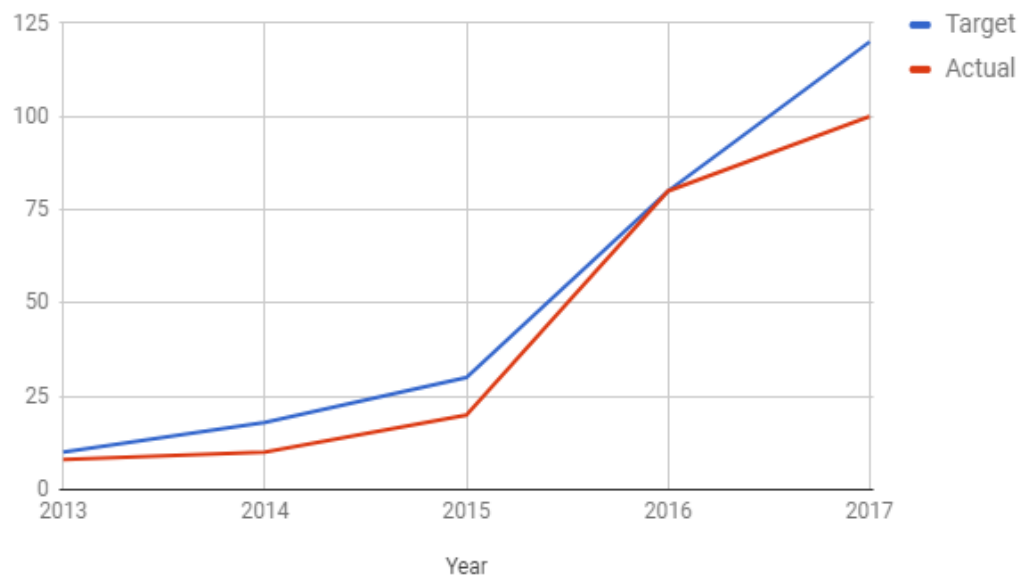


View: Congressional Districts Hydrologic Regions Regional Boards

Acres by Activity Type: Grouped Stacked

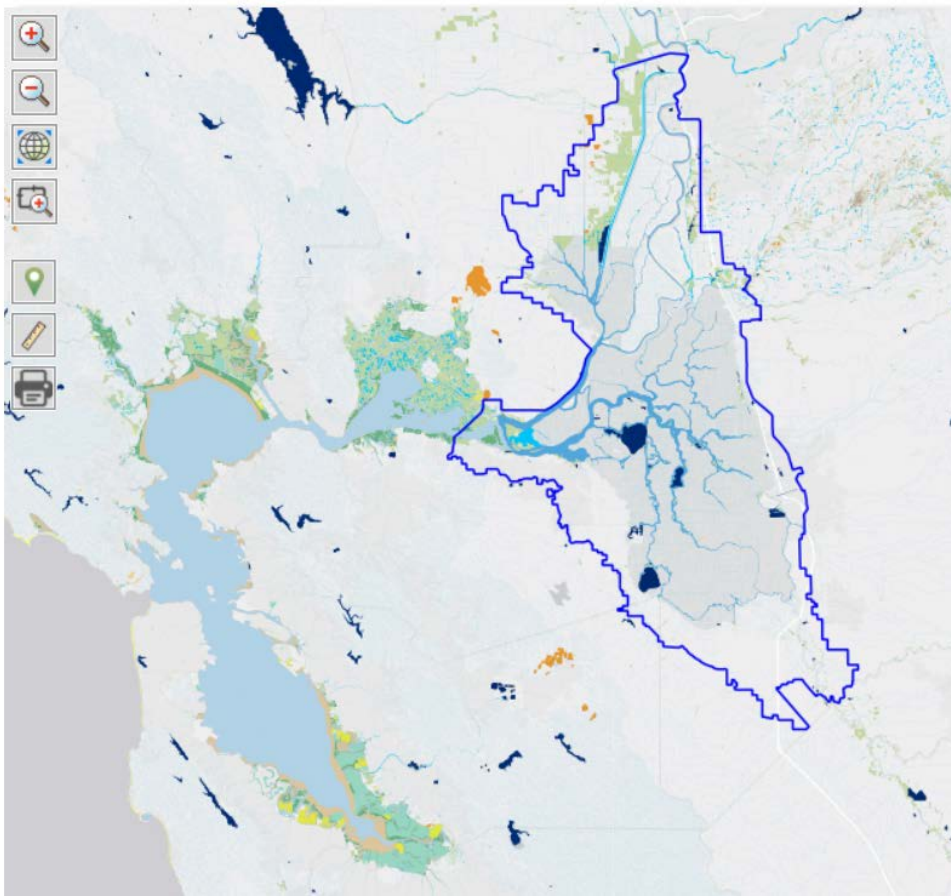


### Metric Tons of Carbon Sequestered



# Delta Aquatic Resource Inventory (DARI)





# Project Objectives

- Data compilation
- Coordination and DARI mapping SOP training
- Quality Assurance/Quality Control review
- Integrate DARI into EcoAtlas



**SFEI** | AQUATIC  
SCIENCE  
CENTER



**USGS**  
*science for a changing world*



# Opportunity to Form Level 1 Committee

- DARI project provides **opportunity to form Level 1 Committee** with federal and state partnerships (NHD, NWI)
- **Opportunity for a comprehensive approach** to track the abundance and distribution of wetlands in California
- Workgroup participants can **expand over time** to cover new data collection technologies



**SFEI** | AQUATIC  
SCIENCE  
CENTER



**USGS**  
science for a changing world



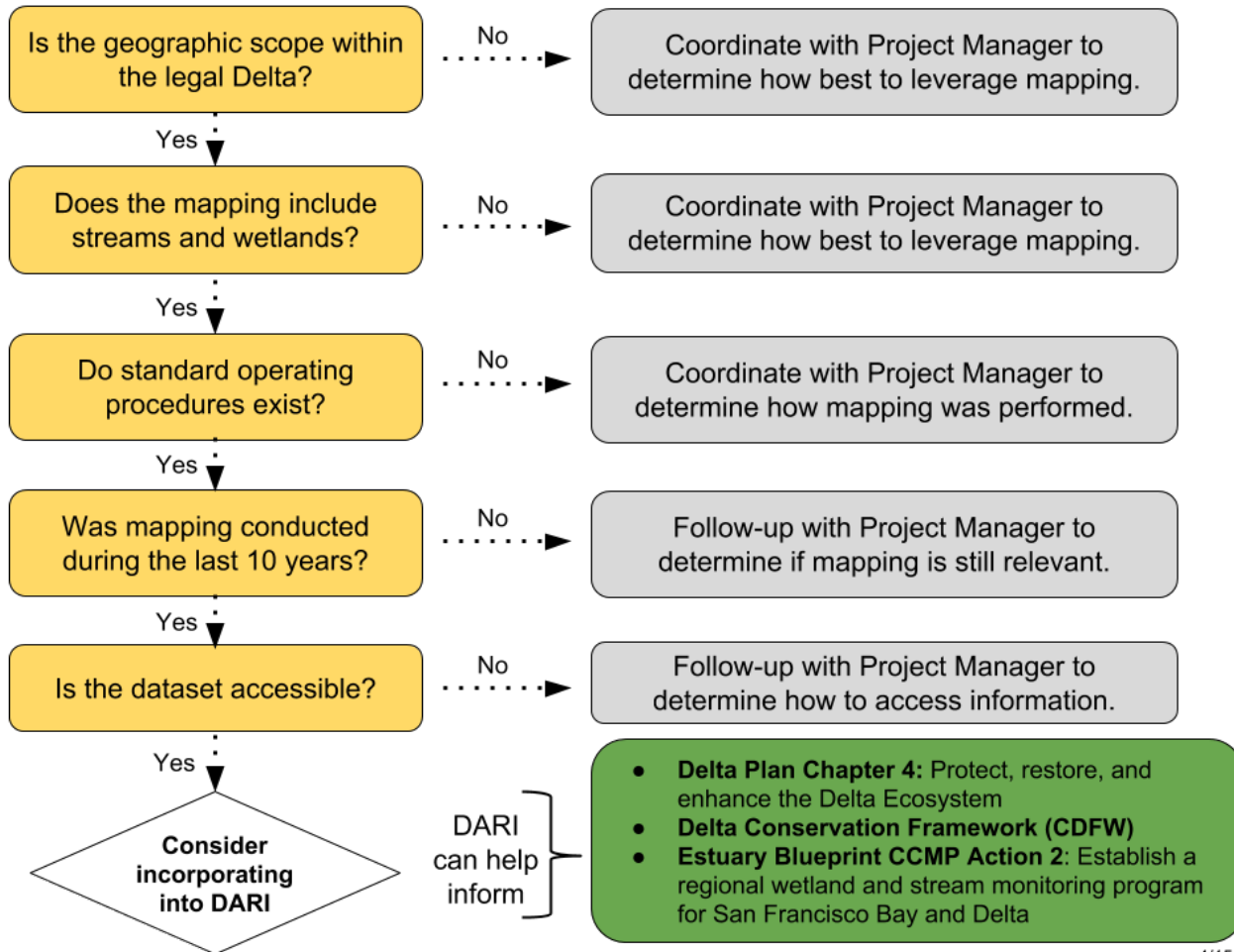


# Data Compilation Available Data

- Compiled list of available data and the study purposes
- Developed schematic of project priorities
- In-progress of analyzing data according to schematic



## Draft DARI Priority Data Decision Schematic

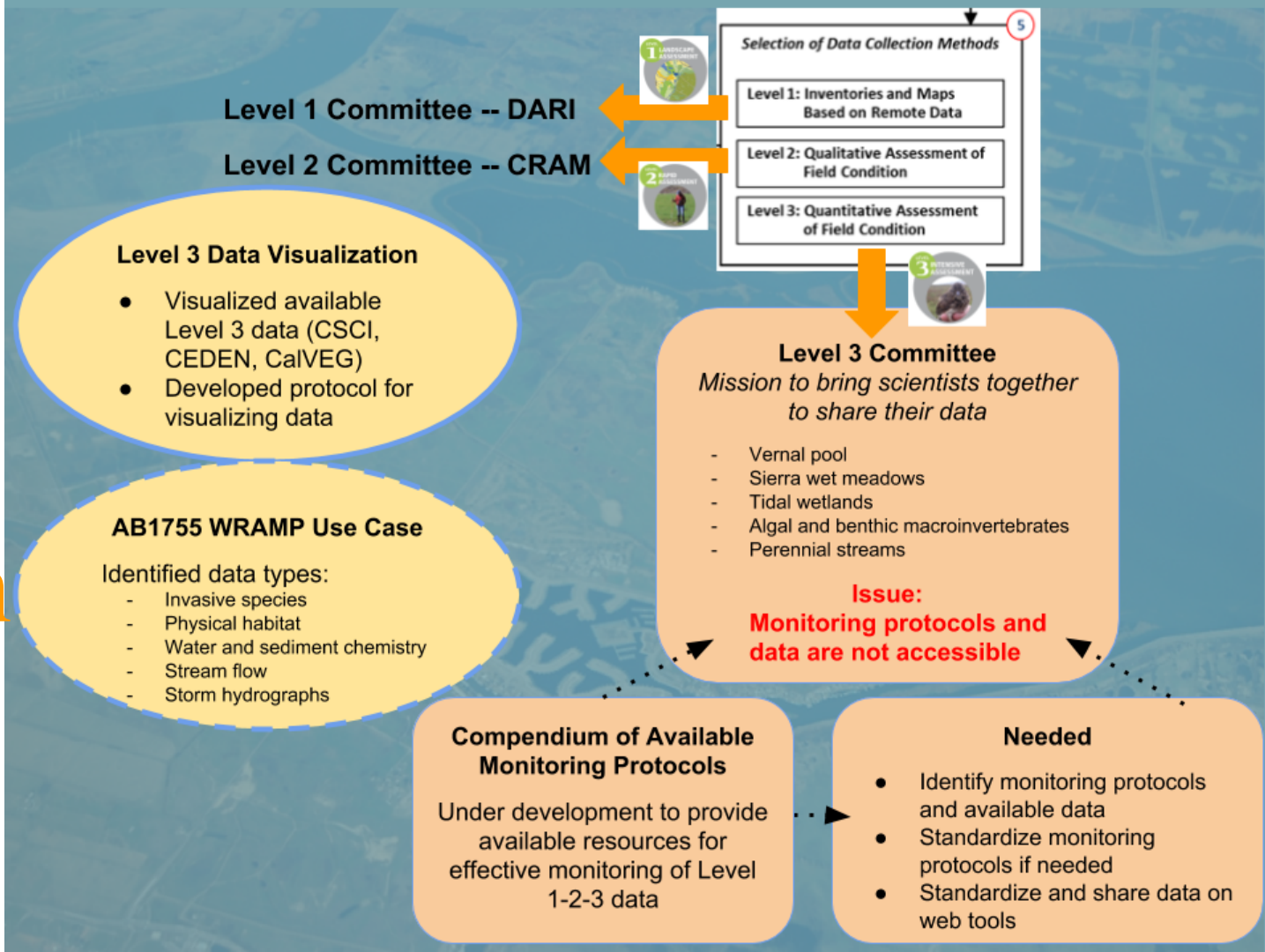


# Level 3 Data Collection





# Level 3 Data Collection



A scenic landscape featuring a body of water in the foreground, likely a wetland or marsh. The water is calm, reflecting the sky and the surrounding vegetation. In the middle ground, there is a dense line of tall, golden-brown reeds or grasses. The background shows a line of trees and a sky filled with large, white, fluffy clouds. Several birds are seen flying in the sky, scattered across the upper half of the image. The overall atmosphere is peaceful and natural.

Thank you