



INTERSECTIONALITY IN ADDRESSING HOMELESSNESS AND TRASH IN THE SAN DIEGO RIVER

Sarah Hutmacher, Chief Associate Director





ABOUT US

The San Diego River Park Foundation is a 501(c)3 nonprofit organization dedicated to creating a better future for the San Diego River. We advance efforts to reduce trash, enhance habitat, conduct research, increase community engagement and stewardship, offer hands-on youth education, and conserve land through acquisition.



OUR TRASH MANAGEMENT MODEL: Data-informed impact



Site condition
data collection



Landowner
coordination



Clean-up

... AND REPEAT!

DATA COLLECTION: Our role

Data visualization on custom mapping tool. Volunteer citizen scientists are trained to collect data using smart phone app (Mappler K2).

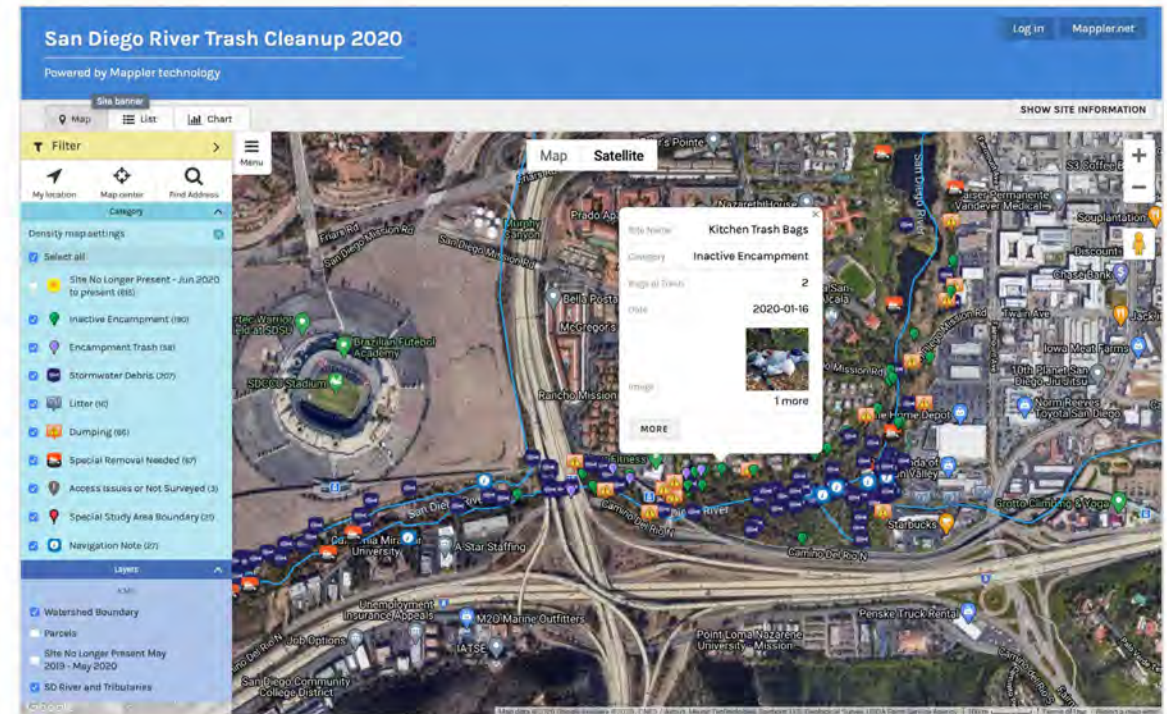
QA/QC by staff and interns.

Allows functionality to issue variable permission logins (view/edit), and to password-protect some data.

Each survey covers a segment of riverbed (0.5 mile – 2+ miles each)

2-4 surveys/week year-round across 24 miles of lower San Diego River means most segments surveyed no less frequently than monthly.

<https://immapler.com/sandiegorivertrash/>

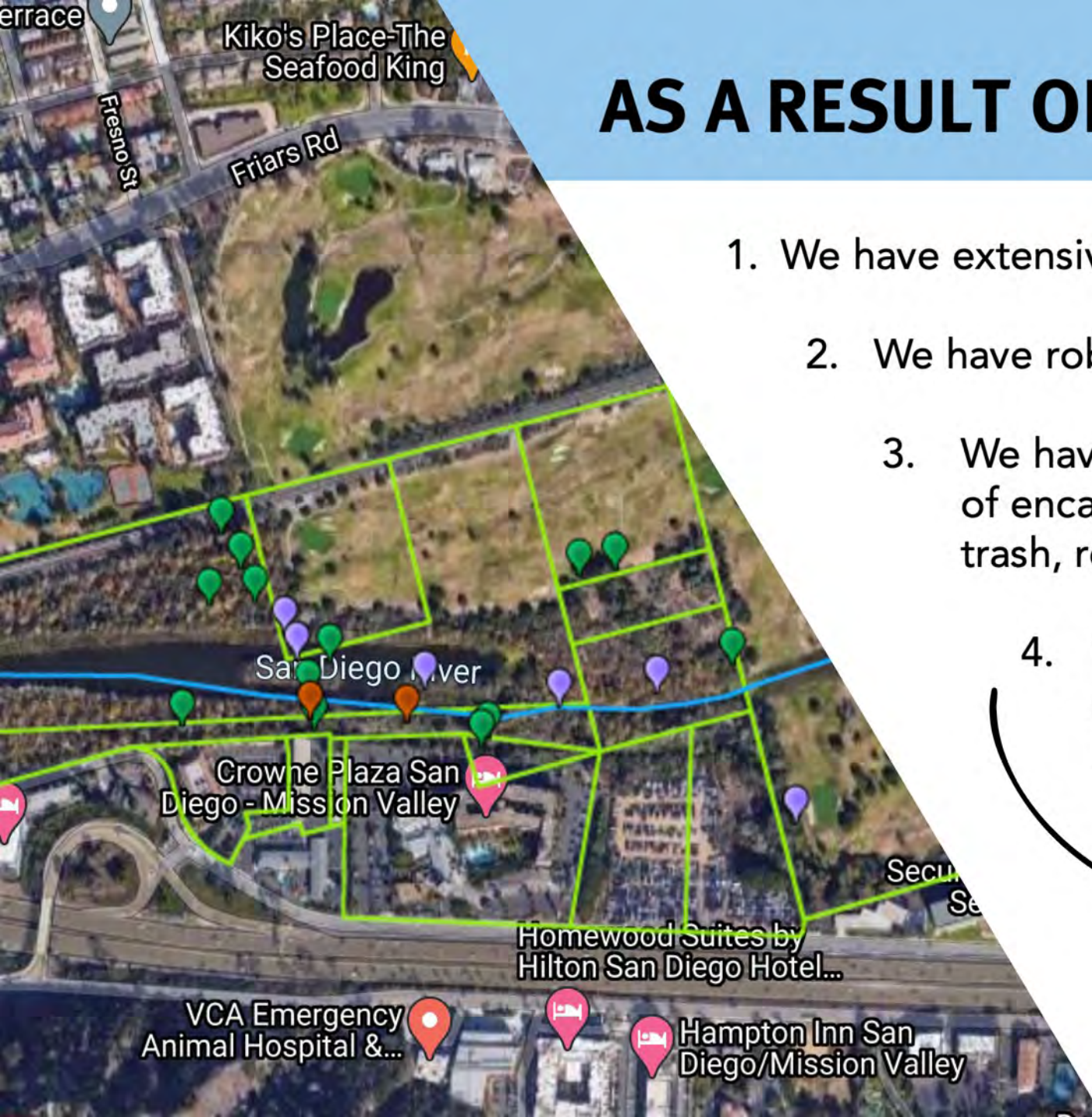


AS A RESULT OF THIS DATA COLLECTION:

1. We have extensive knowledge of the riverbed
2. We have robust relationships with stakeholders
3. We have multi-year dataset containing locations of encampments in the riverbed, quantities of trash, recurrence, etc.
4. We have relationship and familiarity with some of the individuals experiencing homelessness in the riverbed.



**DATA INTERSECTIONALITY
TO ADDRESS MULTIPLE
ISSUES**





ISSUE #1: Environmental Impact



SENSITIVE LANDS

SDRPF collects data about trash on environmentally sensitive lands downstream of MS4 monitoring.



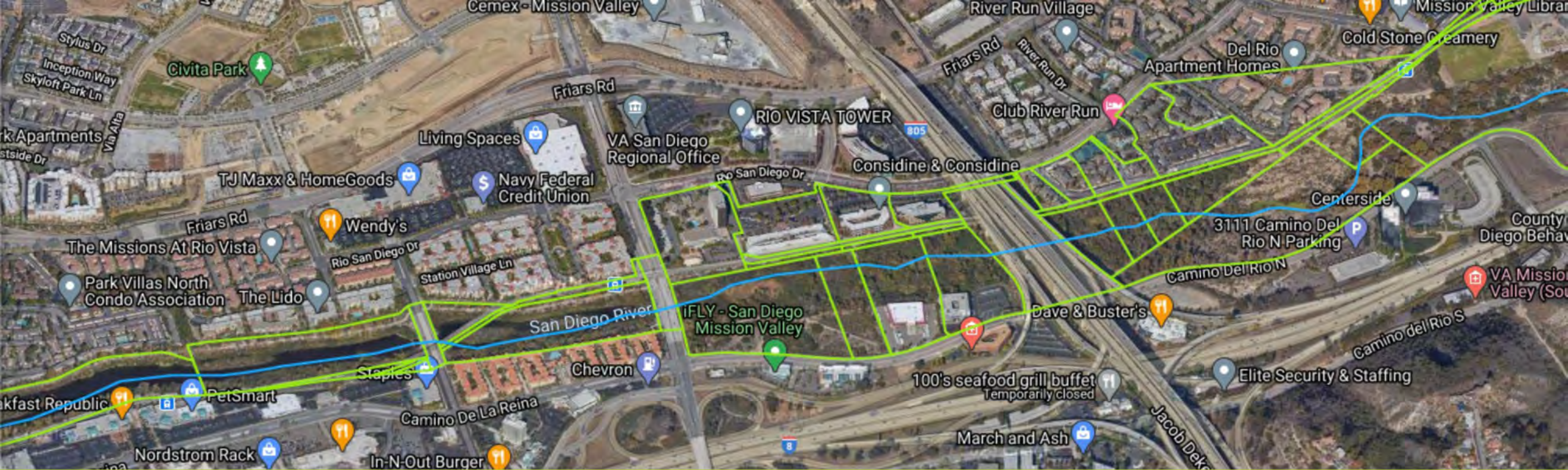
1 MILLION POUNDS

This is the estimated amount of trash entering the San Diego Riverbed annually.



74-95%

In recent years, our data shows that 74-95+% of trash is associated with encampments.



ISSUE #2: Lots of stakeholders with interest in trash mgmt.



Landowners:

- private property (30+ landowners)
- City of San Diego (6 depts/divisions)
- City of Santee
- 5 other public agencies

Law enforcement entities:

- SDPD
- SD Sherriff's Dept.
- DFW Wardens
- MTS Enforcement
- CHP

PLUS...

- Nonprofits
- Regulatory entities
- Academic institutions
- State agencies



ISSUE #3: People experiencing homelessness in riverbed

CROSS-INDUSTRY PARTNERSHIP: More data-informed impact



DATA COLLECTION, RIVERBED NAVIGATION

SDRPF maps encampments to database, provides navigation assistance, increases outreach efficiency



OUTREACH AND CASE MANAGEMENT

Outreach partner (PATH San Diego) provides case management for resource and housing navigation

EARLY IMPACT

In 2020, we began a pilot partnership with outreach worker joining our survey team 1 day/week.

However, 2020 was incredibly atypical:

- Enforcement changes
- Decreased landowner resources and maintenance
- Cancelled clean-ups



294 CONTACTS

These contacts are important to build trust with this vulnerable population, to screen for urgent needs, and allowed us to provide critically-needed PPE.



5+ PLACEMENTS

PATH reports that multiple of their riverbed clients were connected with a variety of housing as a result of the preliminary outreach effort.



INCREASED ATTENTION

Innovation attracted attention from media, elected officials, and funders.

CONSIDERATIONS: a few factors leading to our partnership



- Approach feels more compassionate and humane to staff and volunteers
- Address root cause of the most significant trash issue affecting San Diego Riverbed
- Tap into funding focused on water quality, human services and/or environmental impact
- Partnership allows collaboration without too much "mission creep"
- Must balance privacy concerns with making data public



- Potentially expensive to startup: 1 FTE for SDRPF and 1 FTE for PATH to start (up to ~25 clients managed)
- Many confounding factors make it difficult to track trash impact directly
- Unknown impact on other parts of the watershed
- Unknown timeline for evaluating ROI



INCREASING PARTNERSHIP: 2021

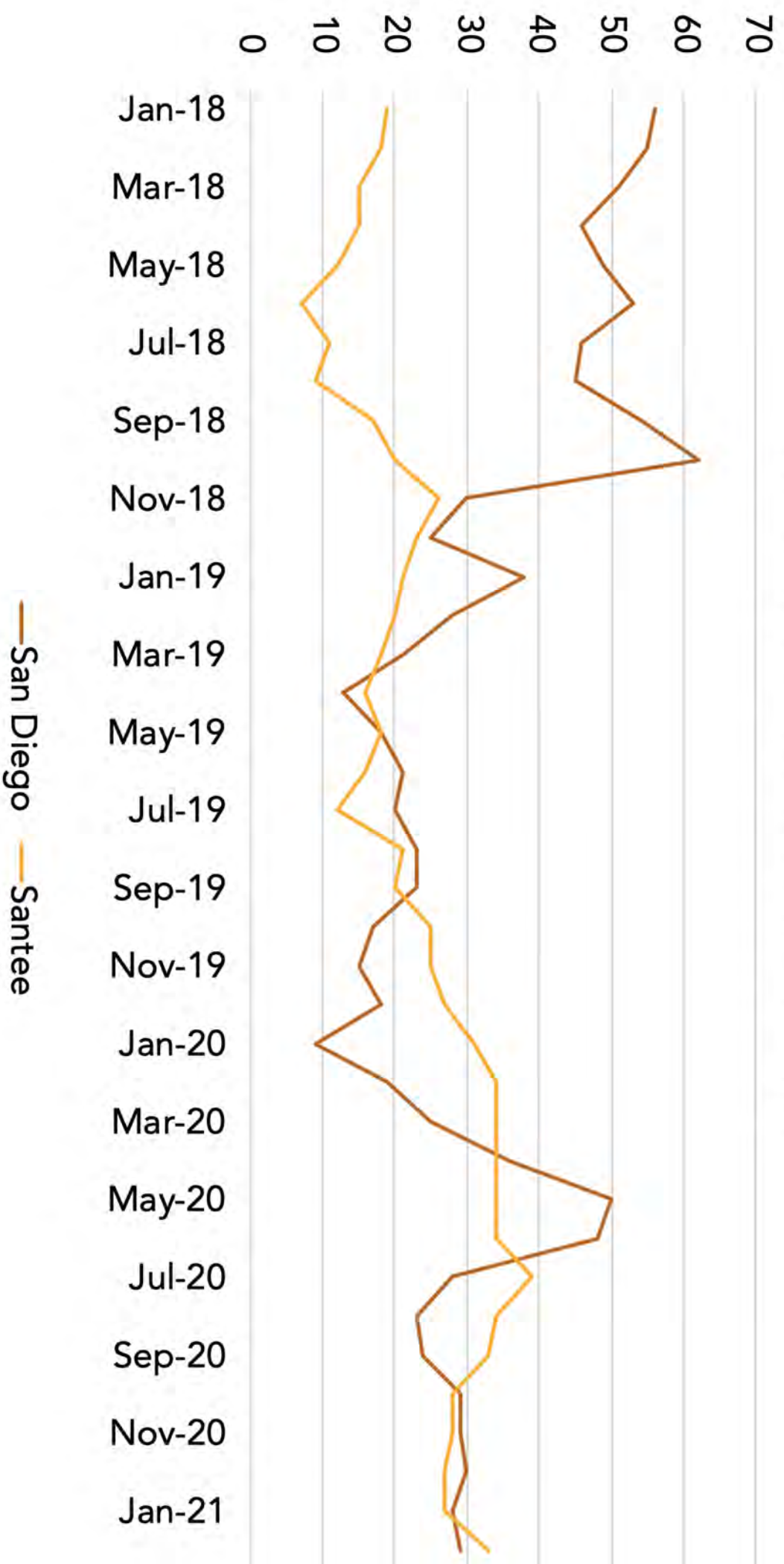
We have secured funding to increase this partnership in 2021, and will be joined by outreach worker 4 days/week.

Too soon for results, but here is what we're tracking:

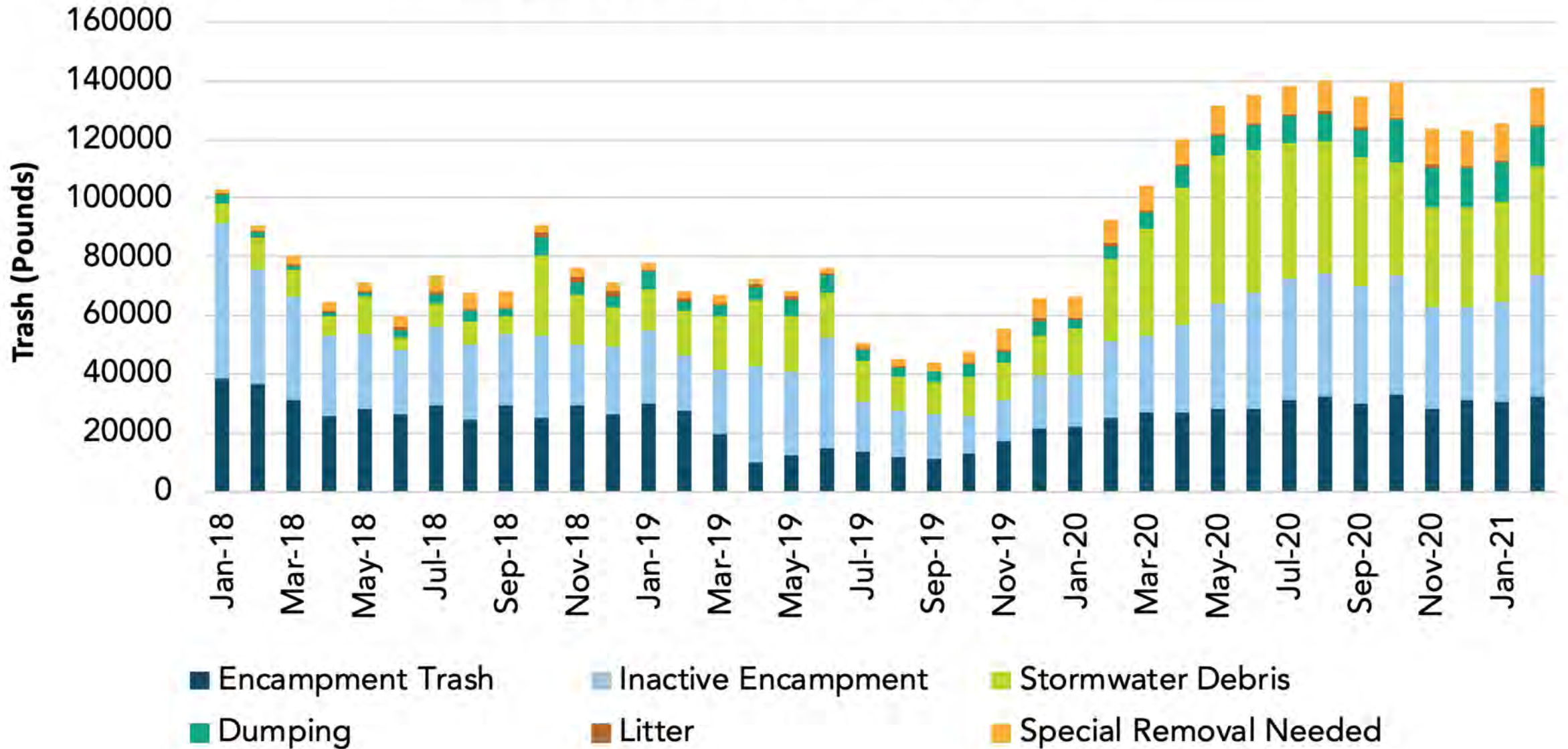
Outreach partner is tracking number of contacts,
number of clients, number of housing connections.

We are tracking...

NUMBER OF ENCAMPMENTS



TRASH IN SAN DIEGO RIVERBED



QUESTIONS?



CONTACT:

Sarah Hutmacher

Chief Associate Director

sarah@sandiegoriver.org