



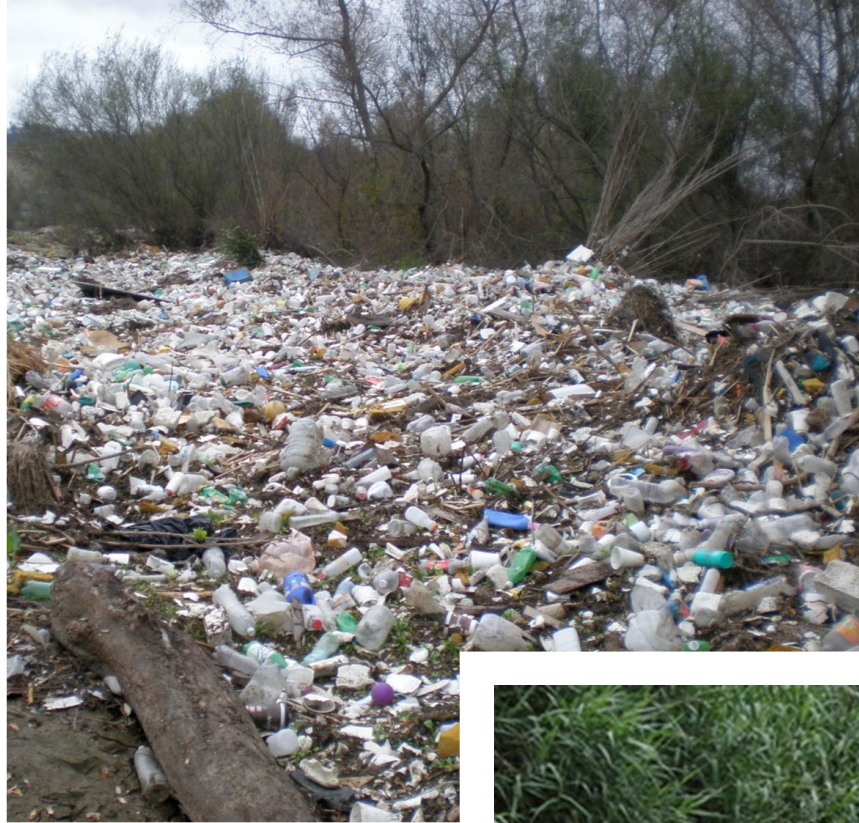
Trash Monitoring Webinar Series
Strategies & Lessons-Learned to Manage Trash During California's Housing Crisis

March 18, 2021

Kaitlyn Kalua, Policy Manager, California Coastkeeper Alliance

AGENDA

- ❖ Kaitlyn Kalua: Statewide Efforts
- ❖ Chris Brokate: Russian Riverkeeper, Clean Team
- ❖ Sarah Hutmacher: The San Diego River Park Foundation
- ❖ Audience: Questions & Answers



THE TRASH POLICY: Minimizing the flow of trash into our waterways

- ❖ Adopted by the State Water Board in 2015
- ❖ Compliance deadlines: 10 years after permit incorporation
- ❖ No later than December 2030



Coverage

MUNICIPAL

- (1) High-density residential: all land uses with at least ten (10) developed dwelling units/acre.
 - (2) Industrial Zones.
 - (3) Commercial Zones.
 - (4) Public Transportation Stations.
-

FREEWAYS

- (1) Highways and on- and off-ramps in high density residential, commercial, and industrial areas.
 - (2) Rest areas and park-and-rides.
 - (3) Mainline highway segments to be identified by the Department through pilot surveys.
-

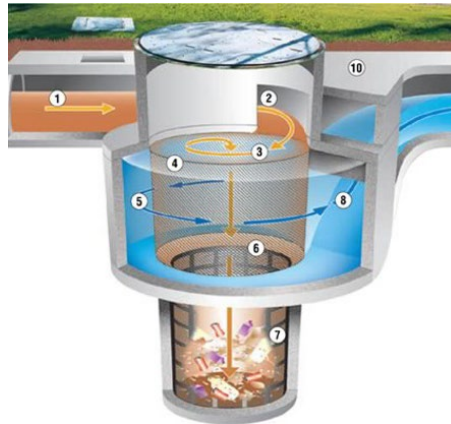
INDUSTRIAL & CONSTRUCTION SITES – Outright prohibition of trash discharges (unless determined to be impossible).

* Outright prohibition of preproduction plastic pellets by manufacturers of pellets, transporters of pellets, and manufacturers that use pellets.

EXEMPTED PROGRAMS – Only the areas covered by the Los Angeles Trash TMDL are exempted. The Bay Area is NOT exempt.

CORE PROGRAM

- TRACK ONE – Install and maintain full capture systems in 100% of storm drains.
- TRACK TWO – Design a trash reduction program with a combination of full capture systems, street sweeping, trash receptacles, education, and source control ordinances.



COMPLIANCE MONITORING

- POLICY COMPLIANCE MONITORING (Only Track 2) – Demonstration that the Permittee Attained 100% Full Capture Equivalency.
- RECEIVING WATER MONITORING (Both Track 1 & 2) – Demonstration that the Permittee Met the Water Quality Standard of “No Trash Present” by 2030.

Other Discharges

Within the MS4 System

“A permitting authority may determine that specific land uses or locations (e.g., parks, stadia, schools, campuses, or roads leading to landfills) generate substantial amounts of Trash.”



Trash Hot Spots - Outside of the MS4

“A permitting authority may require dischargers to implement any appropriate Trash controls in areas or facilities that may generate Trash. Such areas or facilities may include (but are not limited to) high usage campgrounds, picnic areas, beach recreation areas, parks not subject to an MS4 permit, or marinas.”





TRASH HOT SPOTS

- ❖ High Use Beaches
- ❖ Regional Parks
- ❖ Homeless Encampments



CCKA's Homeless Engagement Report

AT A GLANCE

- ❖ 5 programs surveyed:
 - Sonoma County
 - Sacramento River Parkway
 - San Francisco Bay Area
 - Santa Ana River
 - San Diego River
- ❖ 8 – 1,476 unhoused community members reached
- ❖ 24,260 – 200,000 lbs of trash removed annually
- ❖ 2 – 70 miles reached

Key Take-Aways

1. Program goals vary
2. Different definitions of 'success'
3. Geographic & demographic differences





Water Quality Monitoring Council, Trash Working Group

- ❖ Data Standardization, Management & Coordination Subcommittee
- ❖ Citizen Science Subcommittee
- ❖ Homeless Encampment Subcommittee

Homeless Encampment Subcommittee

Overarching Subcommittee Goals:

- Provide data to the Water Boards to identify and quantify trash generated by homeless encampments.
- Identify best practices and programs (including monitoring, measuring, recording, and the resources necessary) to manage and reduce trash generated by homeless encampments.



Homeless Encampment Committee: Trash Survey

- Purpose: To understand to what extent trash data related to homeless encampments and engagement programs exists – and how it is collected.
- This is a **data-driven** survey. The purpose is to quantify trash and understand what data is being collected.

Homeless Encampment
Subcommittee:
Trash Survey (Cont'd)

- **Part I** of the survey is designed to collect data related to the trash generated by homeless encampments. Part I of this two-part survey is intended for municipalities. (**Circulated Sept. 2020**)
- **Part II** will be more comprehensive to collect substantive information regarding the available trash data and data-collection methods related to trash generated by homeless encampments. (**Coming 2021**)

THANK YOU

To learn more or participate in the subcommittee, visit:

https://mywaterquality.ca.gov/monitoring_council/trash_monitoring/.

Contact: Kaitlyn Kalua,
kaitlyn@cacoastkeeper.org

