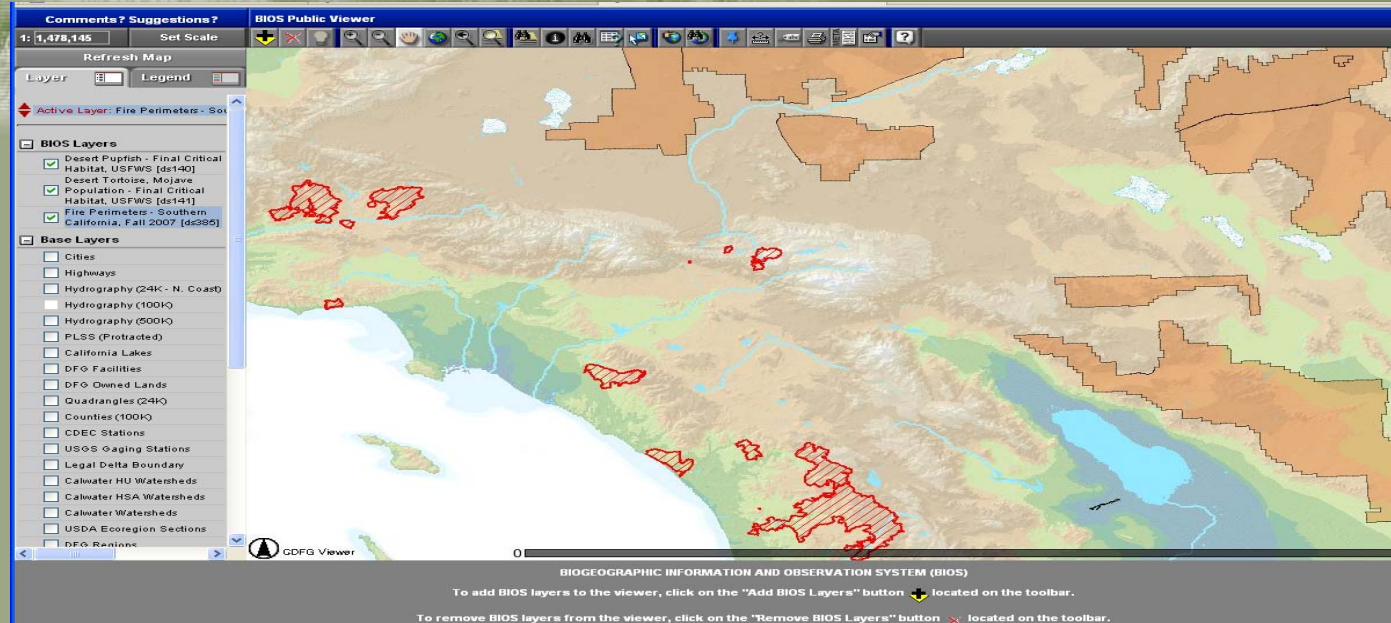




Biogeographic Information and Observation System (BIOS)

www.bios.dfg.ca.gov

Tom Lupo
Branch Chief
Biogeographic Data Branch
Department of Fish & Game



- What is it?
- Some Examples...
- Why Was it Created
- How Might it Help You?
- Future Plans

Add Layer - Mozilla Firefox
http://maps.dfg.ca.gov/viewers/BIOSPublic/addlayer.asp

BIOS DATA CATALOG

[HELP](#)

Available Layers (245 of 245 Layers)

<input checked="" type="checkbox"/>	Desert Pupfish - Final Critical Habitat, USFWS [ds140]		
<input checked="" type="checkbox"/>	Desert Tortoise, Mojave Population - Final Critical Habitat, USFWS [ds141]		
<input type="checkbox"/>	Downed Wood - Spears and Didion Ranches [ds316]		

Checked Layers (2 of 245 Layers)

Desert Pupfish - Final Critical Habitat, USFWS [ds140]	
Desert Tortoise, Mojave Population - Final Critical Habitat, USFWS [ds141]	

Select All Clear All Add Checked Layers to Map

Field Search Term
Filter Available Layers <All Fields> Add

Done



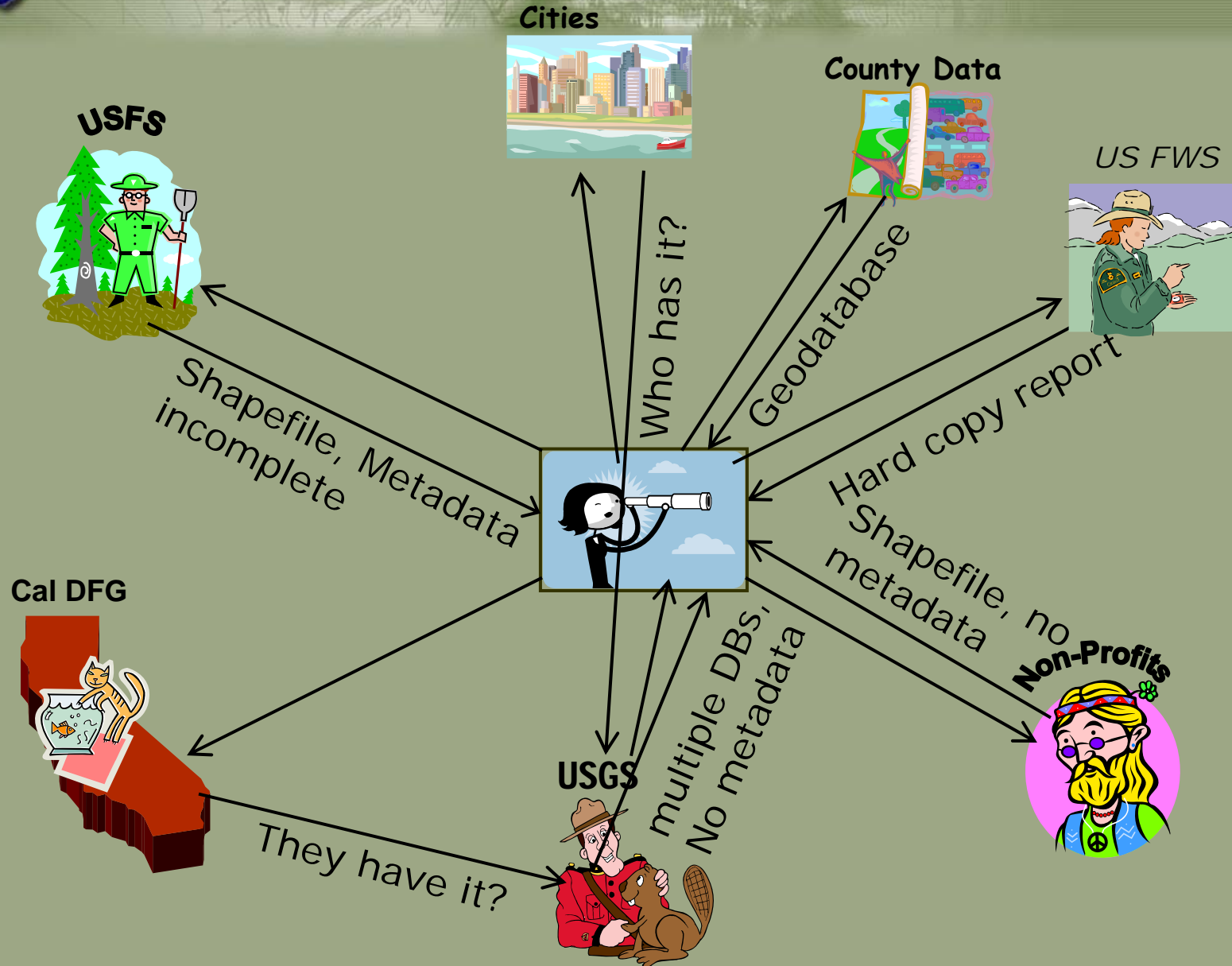
Why Create BIOS?

The challenges . . .

- Environmental resource data collection is increasing rapidly.
- Previously collected data are disappearing as employees change jobs or retire - "it's 'lost' in a filing cabinet/garage" problem...
- There is a lack of standardization in how data are recorded, stored and shared.



Typical Data Management Scenario





Why Create BIOS?

- Need for transparency in government decision-making
- Data/maps frequently not easily viewable, particularly with other features/resources.
- Need to protect our investment in data.
- Action to correct this will avert future crisis.



BIOS as Part of the Solution. . .

- Create an information system to locate and integrate hardcopy and digital data.
- Establish a data management system that provides a standard structure without confining the ability to gather or analyze data.
- Provide an information distribution system to facilitate use of the data by DFG employees, partners and the public.



A screenshot of the BIOS website displayed in a Mozilla Firefox browser window. The browser title is "California Department of Fish & Game, Biogeographic Information and Observation System (BIOS) - Mozilla Firefox". The address bar shows "http://www.bios.dfg.ca.gov/". The website header includes the "CA.GOV" logo and "DEPARTMENT OF FISH AND GAME". Navigation tabs include Home, Recreation, Resource Management, Enforcement, Marine, Spills, Education, and Data & Maps. The main content area is titled "BIOS BIOGEOGRAPHIC INFORMATION & OBSERVATION SYSTEM" and contains a description of the system, a list of "DFG GIS LINKS", "OTHER GIS LINKS", and "OTHER LINKS". A "Public BIOS Data Viewer" button is visible, along with a "Password Management" section on the right side of the page.

What is BIOS?

BIOS is a system for archiving and viewing biogeographic information in DFG (and information held by partners) and facilitating the sharing of that information with DFG employees, partners and the public.

It is an evolving collaboration tool/system and expected to change in response to DFG and partner needs and suggestions.



BIOS Custom ArcIMS Viewer



Data in BIOS

- Internet Map Service (Browser) with:
 - Nearly 300 public datasets
 - Approx. 250 limited access, secure datasets including >65,000 records in Calif. Natural Diversity Database (CNDDDB)
 - More than 500 total datasets (and growing)



Comments? Suggestions?

BIOS

v4.11

1: 1,231,701 Set Scale



About iMaps

Refresh Map

Layer Legend

Active Layer: California Spotted Owl

BIOS Layers

California Spotted Owl - Southern Calif

Base Layers

- Cities
- Highways
- Hydrography 100k
- Hydrography 500k
- Lakes
- DFG Facilities
- DFG Lands
- 24k Quadrangles
- Counties
- Timber Harvest Boundaries (DFG R1)
- PLSS (projected)
- Calwater Watersheds
- USDA Ecoregion Provinces
- DFG Regions
- Public and Conservation Lands
- Mexico
- Western States

Images



BIOS DATA CATALOG

[HELP](#)

Available Layers (4 of 53 Layers)

Checked Layers (0 of 53 Layers)

- California Spotted Owls - Sierra Nevada
- California Spotted Owls - Southern Calif
- Northern Spotted Owl Database
- Northern Spotted Owls - Marin Co.

Select All Clear All

Add Checked Layers to Map

Filter Available Layers **Field** **Search Term**
 -- Choose Field --

Layer Group Contains "California Spotted Owl Database"

LAYER DETAILS

Name: California Spotted Owls - Southern Calif - Spatial Metadata	Id: 13
Abstract: This data set contains 3,259 observations of 441 known California spotted owl sites along the south coast of California from Monterey to Mexico and east to the east end of the Tehachapi Mountains. Site summary information includes location and status history. Observation files include observer, observation date and location, and occupancy status.	
Time Period: 1972 through 2001	Program: Biogeographic Information and Observation System

ZOOM	MASTEROWL	COUNTY	OWNER	FOREST	DIST
1	SD001	SD	CA	CPR	PMT
2	SD002	SD	USFS	CLE	PAL
3	SD003	SD	PVT		PAL



Types of Data...

- CA Natural Diversity Database (CNDDDB)
- T & E Species' Critical Habitats
- Individual Species Observations & Ranges
- Vegetation maps
- California Protected Areas Database (CPAD)
- Fish Passage Barriers
- Invasive Species



Thorough Metadata is Mandatory

- How did you do it
- Why did you do it
- When did you do it
- Outcomes
- Problems
- Scales
- Etc.





CalFish.org

Link to
BIOS Viewer

CALFISH
A CALIFORNIA COOPERATIVE ANADROMOUS
FISH AND HABITAT DATA PROGRAM

[Home](#) | [About CalFish](#) | [Tutorials](#) | [Search](#) | [Contact Us](#)

Friday, October 24, 2008
...: Home ...
[Register](#) [Login](#)

- Home
- Fish Data and Maps
- CalFish News and Events
- In the News
- Programs and Projects
- Independent Datasets
- Docs, Tools, and Standards
- Management Conservation
- People
- About CalFish
- Links
- Search

Welcome to CalFish

CalFish is a multi-agency cooperative program designed to gather, maintain, and disseminate fish and aquatic habitat data and data standards.

Two-Fold Mission:

To create, maintain, and enhance high quality, consistent data that are directly applicable to policy, planning, management, research, and recovery of anadromous fish and related aquatic resources in California; and

To provide data and information services in a timely manner in formats that meet the needs of users.





Chinook Range Query

California Department of Fish and Game - IMAPS Viewer - Mozilla Firefox

http://imaps.dfg.ca.gov/viewers/calfish/app.asp?LyrIDs=1-32|1-31|1-30|1-33|1-34|1-35|1-24|1-22|1-23|1-21|1-20|1-16|1-17|1-12|1-11|1-10|1-14|1-15|1-43|1-53|1-63|2-2|2-1|2-232|2-233|2-7|2-5|2-6|2-5b|2-3|2-4|3-2|3-5|3-209|3-1a|3-1

Comments? Suggestions? CalFish v4.17

1: 2,034,038 Set Scale

Refresh Map

Layer Legend

Chinook Range

- Probable
- Possible
- Chinook Abundance - Linear Features
- Chinook Critical Habitat, NOAA - Central Valley
- Counties (100K)
- Western States
- Mexico

CDFG Viewer 257.8mi

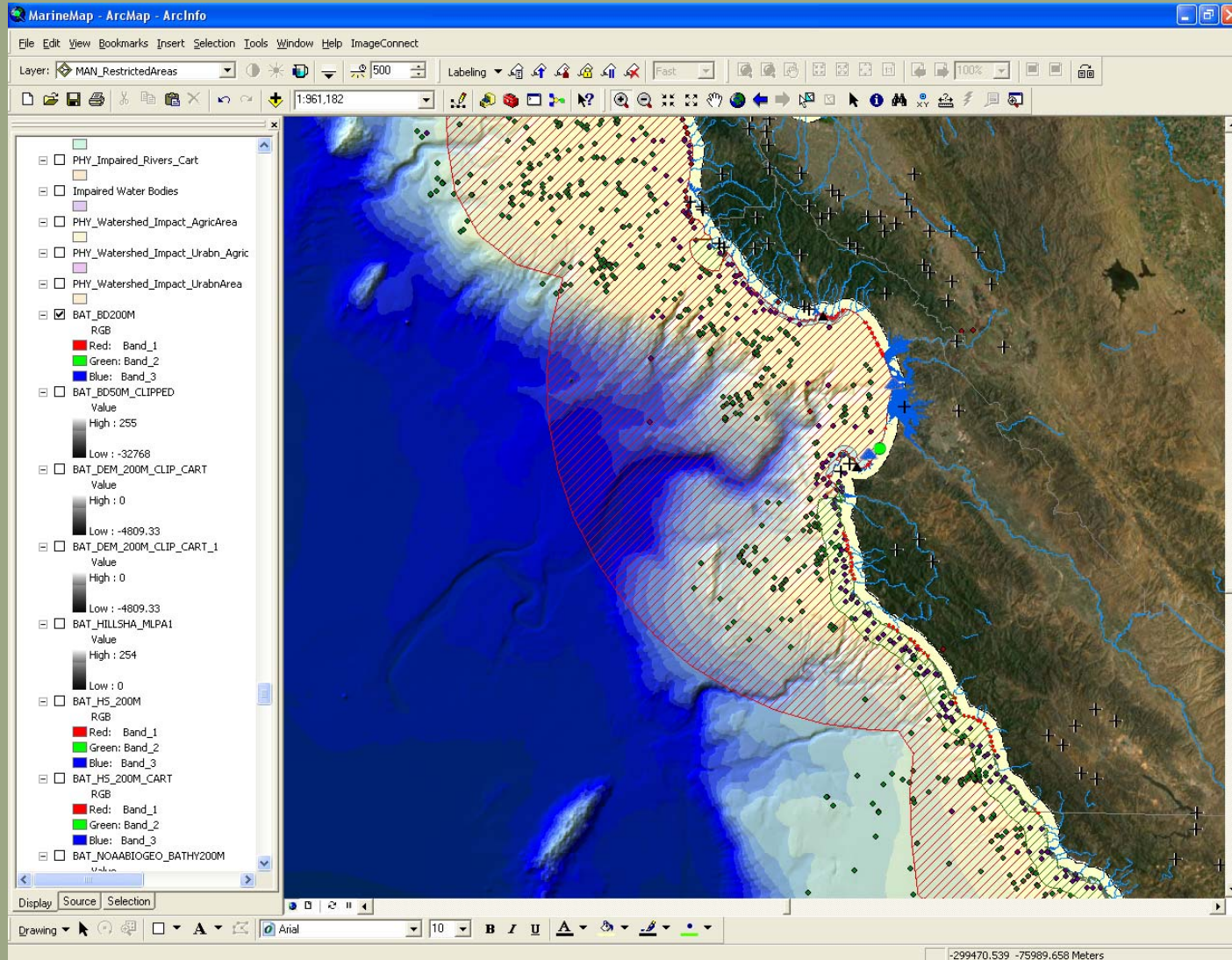
Print Export Expand

Identify Results for **Chinook Range** - 1 record identified

ZOOM	AREA	PERIMETER	CSPOLY	CSPOLY_ID	SPECIES	CONFIDENCE	CHAME	NATIVE
1	2044237696	727001.6875	4	2	Oncorhynchus tshawytscha	2	Chinook salmon	1



<Your map service/data here...>





Data Gathering

- We are not looking to acquire information *per se*, only to help it get liberated.
- We are not managing people's information, only offering a way to share it.
- We are contacting Department units/regions and partners to see if biologists have data sets they might wish to share.



Information Distribution

- BIOS provides a simple to use, interactive, free, web-based GIS viewer optimized for biogeographic data.
- Allows observation of data points on a number of map backgrounds.
- Provides metadata for each dataset, a view of the information of each record displayed on the active layer, an ability to print simple maps, and an ability to search each active data layer.



"Take Home" messages...

- BIOS is a mature "map" & database system and has been operational for several years,
- BIOS is a permanent program and a key to DFG's data management and science operations, and
- ... it's used successfully as an collaboration tool right now.