

CALIFORNIA ESTUARY MONITORING WORKSHOP MEETING

JANUARY 26, 2011



WEB SERVICES • GIS • VISUALIZATION

Open and Collaborative
Natural Resource Management

34 North

- Over 15 years GIS experience
 - 12 years of high profile website development
-

Our experience gives our clients the benefits of geospatial and the functionality and versatility of enterprise websites.

Clients include: State Federal Water Contractors Agency, USGS, Metropolitan Water District of Southern California, XPrize/SpaceshipOne, Warner Brothers, Sundance Film Festival, Cartoon Network (and more).



The Core Technologies: Open NRM

Open Natural Resource Management

- A Suite of web based tools for analyzing and managing natural resources.
- Composed of a number of inter-dependant software modules.

Mapping

Collaboration

**CMS: Content
Management
System**

**Project
Management**

**Custom
Templates**

Support

EXPLORE THE CALIFORNIA DELTA

Images | Video



Map R Download Enlarge Help

MAP



Layers Search Reset Map Size Map Info

FEATURED PRESENTATIONS / REPORTS



Salinity Inhabited by Age-0 Splittail (Pogonichthys macrolepidotus) as Determined by Direct Field Observation and Retrospective Analyses with Otolith Chemistry

Splittail (*Pogonichthys macrolepidotus*) is a fish species of special concern that is endemic to the San Francisco Estuary. It has been generally accepted that spawning and juvenile rearing occurs during spring in freshwater habitats upstream of the estuary. However, the recent discovery of a genetically distinct population of splittail in...

Subscribe to this feed.

Development of Flow Criteria for the Sacramento-San Joaquin Delta Ecosystem

Development of Flow Criteria for the Sacramento-San Joaquin Delta Ecosystem

Final Draft Interim Plan

In November 2009, the California Legislature enacted SBX7 (Act), one of several...

FEATURED PROJECTS



Potential Inundation Due to Rising Sea Levels in the San Francisco Bay Region

An increase in the rate of sea level rise is one of the primary impacts of projected global climate change. To assess potential inundation associated with a continued acceleration of sea level rise, the highest resolution elevation data available were assembled from various sources and mosaicked to cover the land surfaces of the...

Subscribe to this feed.

Bay Delta Conservation Plan

The BDCP is a habitat conservation plan (HCP) and natural communities conservation...



Sustainable Water and Environmental Management in the California Bay-Delta

At the request of Congress and the Departments of the Interior and Commerce, a...

Delta Smelt Culture Facility and Project

Delta Smelt Culture Facility - The University of California, Davis, and the State...

FEATURED WIKI

Previous Next

Aquaforia Twitter



Aqua Blog Maven
Aquaforia

This just in ... Members of Congress send letter to Westlands asking for clarification of it's surplus #cawater <http://b2l.me/asfskq> 4 days ago

C-WIN, CSPA & AquAlliance file suit against SWRCB & DWR to protect Delta public trust fisheries & enforce #cawater law <http://b2l.me/ap29uy> 13 days ago

Troubled Waters: Will the state build or falter on the Legislature's historic compromise? <http://tinyurl.com/23pw6xz> #cawater #sacdelta 17 days ago

Veteran #cawater reporter E.J. Schultz headed for Chicago <http://tinyurl.com/26fn9gj> EJ you will be missed! 33 days ago

#cawater users: the Delta Stewardship Council wants to communicate with you! Take the survey: <http://b2l.me/sgbwub> 41 days ago

Join the conversation

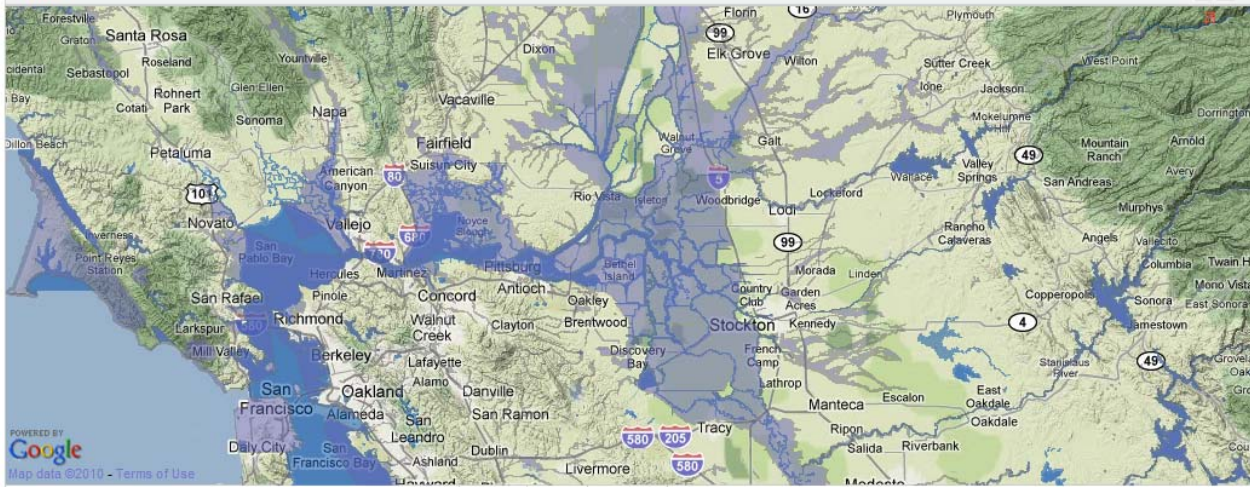
PRESENTATIONS AND REPORTS



Latest Reports and Information

Mapping

MAP



Map navigation controls including zoom in (+), zoom out (-), pan arrows, and a search bar. Below the map are buttons for 'Layers', 'Search', 'Reset', 'Map Size', and 'Map Info'.

LAYER MANAGER

LAYERS ACTIVE MAPS SENSORS +

- BASE LAYERS
- CALIFORNIA DELTA LAYERS
- ADDITIONAL IMAGERY
- PLACES, URBAN AREAS AND CENSUS
- TRANSPORTATION & INFRASTRUCTURE
- LAND DESIGNATION
- DELTA GEOMORPHOLOGY
- WATER & INFRASTRUCTURE**
 - RIVERS & BODIES OF WATER (LINEAR)
 - RIVERS & BODIES OF WATER (POLYGON)
 - Manage this layer.
 - DAMS
 - CANALS
 - DELTA PROJECT LEVEE
 - DELTA NON-PROJECT LEVEES
 - FEMA FLOOD DATA
 - Manage this layer.
 - CALDIS
 - CALIFORNIA INTERAGENCY WATERSHED
- GEOPOLITICAL
- DELTA FEATURES & DWP ATLAS

FEATURED PRESENTATIONS / REPORTS

Salinity Inhabited by Age-0 Splittail (Pogonichthys macrolepidotus) as Determined by Direct Field Observation and Retrospective Analyses with Otolith Chemistry
Splittail (Pogonichthys macrolepidotus) is a fish species of special concern that is endemic to the San Francisco Estuary. It has been generally accepted that spawning and juvenile rearing occurs during spring in freshwater habitats upstream of the estuary. However, the recent discovery of a genetically distinct population of splittail in... [MORE>](#)

Development of Flow Criteria for the Sacramento-San Joaquin Delta Ecosystem
Development of Flow Criteria for the Sacramento-San Joaquin Delta Ecosystem [MORE>](#)

Final Draft Interim Plan
In November 2009, the California Legislature enacted SBX7 (Act), one of several... [MORE>](#)

Subscribe to this feed.

FEATURED PROJECTS

Potential Inundation Due to Rising Sea Levels in the San Francisco Bay Region
Abstract: An increase in the rate of sea level rise is one of the primary impacts of projected global climate change. To assess potential inundation associated with a continued acceleration of sea level rise, the highest resolution elevation data available were assembled from various sources and mosaicked to cover the land... [MORE>](#)

Bay Delta Conservation Plan
The BDCP is a habitat conservation plan (HCP) and natural communities conservation... [MORE>](#)

Sustainable Water and Environmental Management in the California Bay-Delta
At the request of Congress and the Departments of the Interior and Commerce, a... [MORE>](#)

Delta Smelt Culture Facility and Project
Delta Smelt Culture Facility - The University of California, Davis, and the State,... [MORE>](#)

<< BACK REFRESH SESSION OPTIONS

GRAPH MODE

ENTER START DATE AND END DATE
2010-09-18 2010-09-21

OR DURATION
3 DAYS

GRAPHING OPTIONS

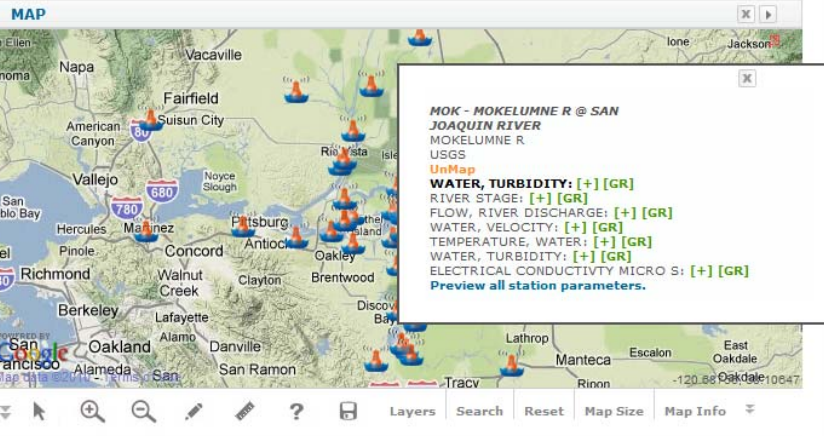
Overlay New Page
 New Graph Show Dialog

DATA AND PRESETS

CURRENT SESSION SAVED SESSIONS
Save as Preset Clear All Graph Data

Data Preview
Data Range Stn ID Sensor Duration

Open GR



SEARCH STATIONS

SEARCH Go

DATA SOURCE: CDEC (California Data Excl) SENSOR: WATER, TURBIDITY

REGIONS: Current Map Extent SENSOR TYPE: -- all --

CLEAR PREVIOUS MAP RESULTS

MAP IT

STATIONS

View by: List | Icons Order by: Date | Title

SAN JOAQUIN RIVER AT ANTIOCH ANH	Oct 16, 2008 12:00 AM - Dec 31, 2010 12:00 AM	Preview Data Map It Download URL Delete [&]
BARKER SLOUGH PUMPING PLANT (KG000000) BKS	Jun 01, 1989 12:00 AM - Dec 31, 2010 12:00 AM	Preview Data Map It Download URL Delete [&]
BLIND POINT BLP	Dec 01, 1995 12:00 AM - Aug 22, 1999 12:00 AM	Preview Data Map It Download URL Delete [&]
CLIFTON COURT CLC	Mar 10, 1988 12:00 AM - Dec 31, 2010 12:00 AM	Preview Data Map It Download URL Delete [&]
CORDELIA PUMPING PLANT (KG002111) CPP	Mar 01, 1993 12:00 AM - Dec 31, 2010 12:00 AM	Preview Data Map It Download URL Delete [&]
DELTA CROSS CHANNEL BTW SAC R & SNODGRAS DLC	Dec 01, 2009 12:00 AM - Dec 31, 2010 12:00 AM	Preview Data Map It Download URL Delete [&]
DUTCH SLOUGH AT JERSEY ISLAND DSJ	Dec 09, 2009 12:00 AM - Dec 31, 2010 12:00 AM	Preview Data Map It Download URL Delete [&]
FALSE RIVER FAL	Jan 03, 2008 12:00 AM - Dec 31, 2010 12:00 AM	Preview Data Map It Download URL Delete [&]
SACRAMENTO RIVER BELOW GEORGIANA SLOUGH GES	Dec 03, 2009 12:00 AM - Dec 31, 2010 12:00 AM	Preview Data Map It Download URL Delete [&]
GRANTLINE CANAL (USGS) GLC	Jul 05, 2007 12:00 AM - Dec 31, 2010 12:00 AM	Preview Data Map It Download URL Delete [&]

Mapping Web Services

<< BACK REFRESH SESSION OPTIONS

GRAPH MODE

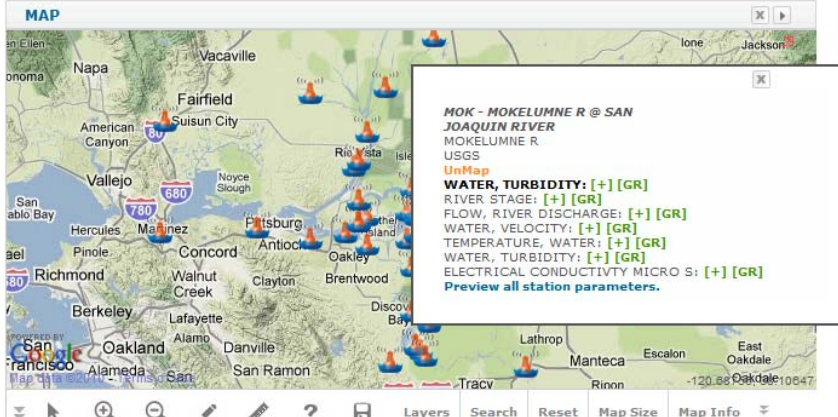
ENTER START DATE AND END DATE
2010-09-18 2010-09-21

OR DURATION
3 DAYS

GRAPHING OPTIONS
 Overlay New Page
 New Graph Show Dialog

DATA AND PRESETS
 CURRENT SESSION SAVED SESSIONS
 Save as Preset Clear All Graph Data

Data Preview
 Data Range Stn ID Sensor Duration



SEARCH STATIONS

SEARCH [input] Go

DATA SOURCE: CDEC (California Data Excl) SENSOR: WATER, TURBIDITY

REGIONS: Current Map Extent SENSOR TYPE: -- all --

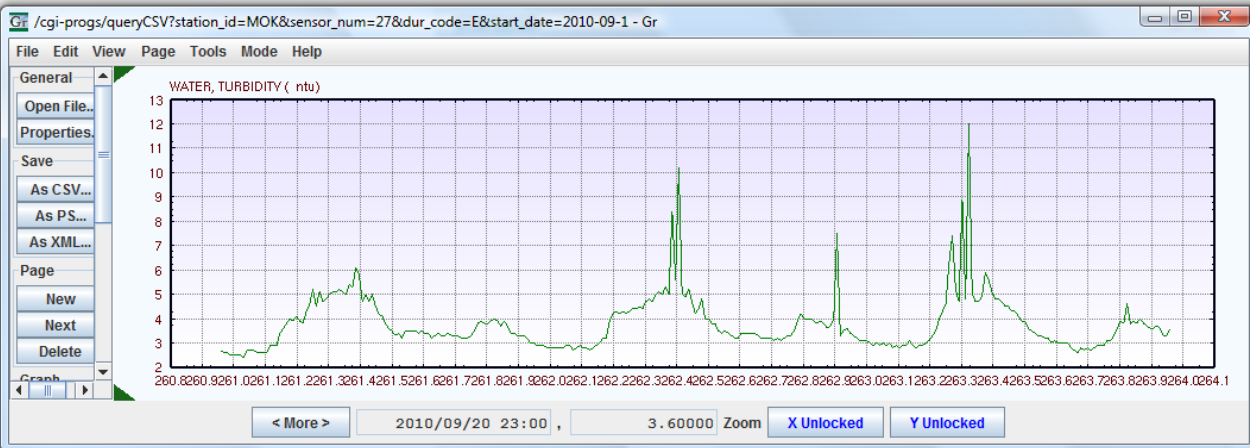
MAP IT CLEAR PREVIOUS MAP RESULTS

STATIONS

View by: List | Icons Order by: Date | Title

Oct 16, 2008 12:00 AM - Dec 31, Preview Data Map It

Mapping Web Services



BACK TO HOME

CALIFORNIA WIKI ENCYCLOPEDIA

SEARCH WIKI

REFINE SEARCH [View All Listings](#)

Regions:

Library:

Map It:

Search:

[+ NEW](#) View by: List | **Icons** Order by: **Date** | Title / \

- 1 2 NEXT
- | | |
|---|--|
| <p>[P] DELTA CROSS CHANNEL
Delta Cross Channel
Apr 17, 2010 03:26 PM
+ Actions</p> | <p>[P] SUBSIDENCE
Subsidence
Jan 07, 2011 05:08 PM
+ Actions</p> |
| <p>[P] CHINOOK SALMON
Chinook Salmon
Nov 22, 2010 10:53 AM
+ Actions</p> | <p>[P] LEVEE INTEGRITY
Levee Integrity
Nov 21, 2010 04:12 PM
+ Actions</p> |
| <p>[P] GROUNDWATER
Groundwater
Sep 23, 2010 10:14 AM
+ Actions</p> | <p>[P] FISH LINKS AND DIRECTORIES
FISH LINKS AND DIRECTORIES
Aug 16, 2010 12:45 PM
+ Actions</p> |
| <p>[P] KIT FOX
Kit Fox
Aug 05, 2010 11:49 AM
+ Actions</p> | <p>[P] SUISUN MARSH
Suisun Marsh
May 25, 2010 06:44 PM
+ Actions</p> |
| <p>[P] EL NINO
El Nino
Apr 20, 2010 10:03 AM
+ Actions</p> | <p>[P] CHINESE MITTEN CRAB
Chinese Mitten Crab
Apr 19, 2010 02:05 PM
+ Actions</p> |
| <p>[P] SACRAMENTO SHIP CHANNEL
Sacramento Ship Channel
Apr 19, 2010 11:25 AM
+ Actions</p> | <p>[P] LEVEES
Levees
Apr 19, 2010 11:24 AM
+ Actions</p> |
| <p>[P] OVERBITE CLAM, CORBULA AMURENSIS
Overbite Clam, <i>Corbula amurensis</i>
Apr 19, 2010 11:23 AM
+ Actions</p> | <p>[P] DIVERSIONS
Diversions
Apr 19, 2010 11:21 AM
+ Actions</p> |
| <p>[P] ECOSYSTEM RESTORATION
Ecosystem Restoration
Apr 19, 2010 09:56 AM
+ Actions</p> | <p>[P] CACHE SLOUGH
Cache Slough
Apr 17, 2010 03:37 PM
+ Actions</p> |
| <p>[P] DELTA CROSS CHANNEL
Delta Cross Channel
Apr 17, 2010 03:26 PM
+ Actions</p> | <p>[P] DUTCH SLOUGH
Dutch Slough
Apr 16, 2010 06:22 PM
+ Actions</p> |
| <p>[P] GIANT GARTER SNAKE
Giant Garter Snake
Apr 02, 2010 07:00 PM
+ Actions</p> | <p>[P] SACRAMENTO PERCH
Sacramento Perch
Feb 03, 2010 02:22 PM
+ Actions</p> |
| <p>[P] LONGFIN SMELT
Longfin Smelt
Feb 03, 2010 02:21 PM
+ Actions</p> | <p>[P] LAHONTAN CUTTHROAT TROUT,...
Lahontan Cutthroat Trout, <i>Oncorhynchus clarkii henshawi</i>
Nov 09, 2009 12:52 PM
+ Actions</p> |
| <p>[P] SAGEHEN CREEK
Sagehen Creek
Oct 21, 2009 08:43 AM</p> | <p>[P] SACRAMENTO BLACKFISH
Sacramento Blackfish
Oct 19, 2009 09:48 PM</p> |

Mapping
Web Services
Collaborate-
Wiki

Chinook Salmon

Share CAPTION Chinook Salmon

DESCRIPTION

Chinook salmon are easily the largest of any salmon, with adults often exceeding 40 pounds (18 kg); individuals over 120 pounds (54 kg) have been reported. Chinook salmon are very similar to coho salmon in appearance while at sea (blue-green back with silver flanks), except for their large size, small black spots on both lobes of the tail, and black pigment along the base of the teeth. Adults migrate from a marine environment into the freshwater streams and rivers of their birth in order to mate (called anadromy). They spawn only once and then die (called semelparity). They feed on terrestrial and aquatic insects, amphipods, and other crustaceans while young, and primarily on other fishes when older. Populations exhibit considerable variability in size and age of maturation, and at least some portion of this variation is genetically determined. There is a relationship between small size and long distance of migration that may also reflect the earlier timing of river entry and the cessation of feeding for Chinook salmon stocks that migrate to the upper reaches of river systems. Body size, which is related to age, may be an important factor in migration and spawning bed, or redd, construction success. Juvenile Chinook may spend from 3 months to 2 years in freshwater before migrating to estuarine areas as smolts and then into the ocean to feed and mature. Chinook salmon remain at sea for 1 to 6 years (more commonly 2 to 4 years), with the exception of a small proportion of yearling males (called jack salmon) which mature in freshwater or return after 2 or 3 months in salt water. There are different seasonal (i.e., spring, summer, fall, or winter) "runs" in the migration of Chinook salmon from the ocean to freshwater, even within a single river system. These runs have been identified on the basis of when adult Chinook salmon enter freshwater to begin their spawning migration. However, distinct runs also differ in the degree of maturation at the time of river entry, the temperature and flow characteristics of their spawning site, and their actual time of spawning. Freshwater entry and spawning timing are believed to be related to local temperature and water flow regimes. Adult female Chinook will prepare a redd (or nest) in a stream area with suitable gravel type composition, water depth and velocity. The adult female Chinook may deposit eggs in 4 to 5 "nesting pockets" within a single redd. Spawning sites have larger gravel and more water flow up through the gravel than the sites used by other Pacific salmon. After laying eggs in a redd, adult Chinook will guard the redd from just a few days to nearly a month before dying. Chinook salmon eggs will hatch, depending upon water temperatures, 3 to 5 months after deposition. Eggs are deposited at a time to

Article Viewer Map Related/Results + Share

SCIENTIFIC NAME

Oncorhynchus tshawytscha - (Walbaum, 1792)

OVERVIEW



Delta Blues: Trucking salmon around the California Delta from Steven Johnson on Vimeo.

Four distinct runs of Chinook salmon spawn in the Sacramento-San Joaquin River system, named for the season when the majority of the run enters freshwater as adults. Fall-run Chinook migrate upstream as adults from July through December and spawn from early October through late December. The timing of runs varies from stream to stream. Late fall-run Chinook migrate into the rivers from mid-October through December and spawn from January through mid-April. The majority of young salmon of these races migrate to the ocean during the first few months following emergence, although some may remain in freshwater and migrate as yearlings. Fall-run Chinook are currently the most abundant of the Central Valley races, contributing to large commercial and recreational fisheries in the ocean and popular sportfisheries in the freshwater streams. Fall-run Chinook are raised at five major Central Valley hatcheries which release more than 32 million smolts each year. Due to concerns over population size and hatchery influence, Central Valley fall/late fall-run Chinook salmon are a Species of Concern under the federal Endangered Species Act.

SPECIES OF CONCERN

yes

CONSERVATION STATUS

(SE,FT)

NATIVE

yes

KINGDOM

Animalia

PHYLUM

Chordata

CLASS

Actinopterygii

ORDER

Salmoniformes

FAMILY

Salmonidae

GENUS

Oncorhynchus

SPECIES

Oncorhynchus tshawytscha (Walbaum in Artdi, 1792) -- Chinook salmon, chinook salmwon or king salmon, salmon boquingra, saumon chinook

Mapping
Web Services
Collaborate-
Wiki

<< BACK REFRESH

DELTA ATLAS

DELTA ATLAS MAPS

The Legal & Primary Delta

Major Roads

Railroads

Deep Water Ship Channels

Power Transmission Lines

Gas & Oil Fields/Storage

Islands & Waterways

Population & Counties

Urban Areas

Land Use

Conservation Lands

Protected Lands

Managed Lands

Organic Soils

Elevations

Marsh Watersheds

Suisun Marsh Boundaries

Recreation

Boat Launch Facilities

Tidal Flows

Tidal Levels

Historic Flooding 1930-1966

Recent Flooding 1967-1992

100-Year Flood Stage Elevations

Salinity 1921-1944

Salinity 1944-1990

Irrigation Diversions

Agricultural Drainage Returns

Monitoring Stations

Major Diversions

Project & Nonproject Levees

Aqueducts

Constructed Waterways

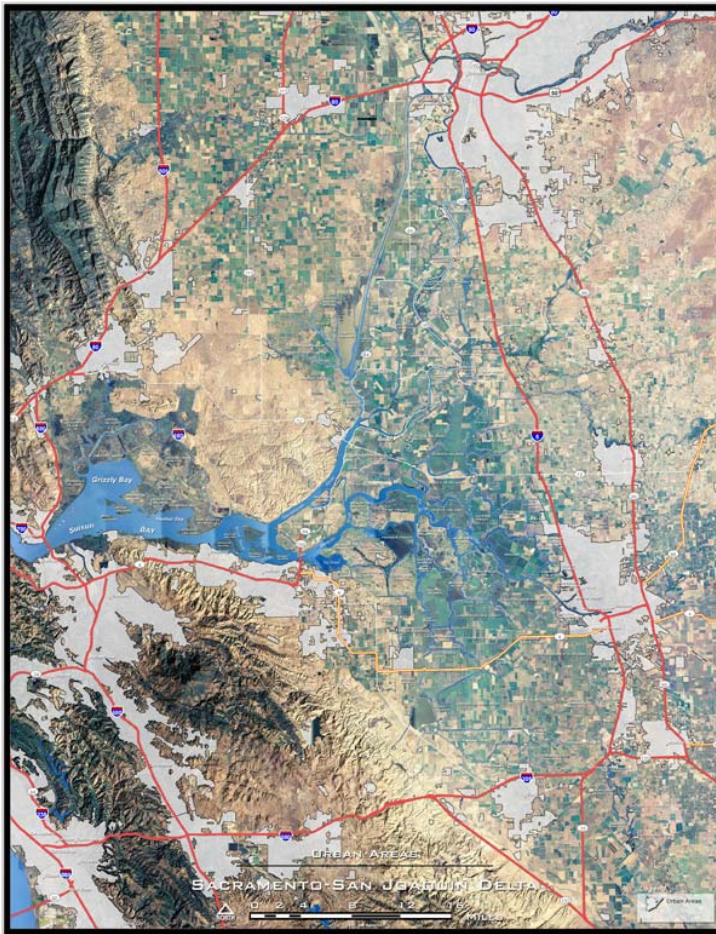
Congressional Districts

State Senate Districts

Urban Areas

Source: California Department of Water Resources
Map Design: 34 North

To Download this map [CLICK HERE.](#)



EDIT THIS PAGE

DELTA ATLAS MAPS

The Legal & Primary Delta

Major Roads

Railroads

Deep Water Ship Channels

Power Transmission Lines

Gas & Oil Fields/Storage

Mapping

Web Services

Collaborate-
Wiki

Presentation

BACK TO MY DOCUMENTS

DOCUMENTS

+ NEW

View by: List | Icons Order by: Date | Title

1 2 3 4 5 6 7 8 9 10 11 12 13 14 15 16 17 18 19 20 21 NEXT

BROWSE

REFINE SEARCH [View All Listings](#)

Media:

Regions:

Library:

Map It:

Search:

MAP

Search Reset Map Size Map Info

- MODEL FOR TESTING**
This model is for testing. And may be used for any kind of experiments, learning, saving, etc.
Jan 13, 2011 12:37 PM
[+ Actions](#)
- DELTA TURBIDITY MODEL**
The objective of this effort is to calibrate the turbidity model to the best available in-Delta turbidity data so that reasonably accurate turbidity ...
Jan 11, 2011 08:30 PM
[+ Actions](#)
- GR_SESSION_1.MP4**
Bay Delta Live Screen Cast for Gr Real-Time Data
34 North
Jan 11, 2011 07:43 PM
[+ Actions](#)
- BDL MAP VIEW SENSORS**
Jan 11, 2011 07:01 PM
[+ Actions](#)
- BDL APP STATION SENSOR**
Jan 11, 2011 03:14 PM
[+ Actions](#)
- ATLAS PROTECTED LANDS.JPG**
DWR
Jan 11, 2011 01:23 PM
[+ Actions](#)
- ATLAS CONSERVATION LANDS.JPG**
DWR
Jan 11, 2011 01:23 PM
[+ Actions](#)
- ATLAS LAND USES.JPG**
DWR
Jan 11, 2011 01:23 PM
[+ Actions](#)
- ATLAS URBAN AREAS.JPG**
DWR
Jan 11, 2011 01:23 PM
[+ Actions](#)
- ATLAS GAS OIL FIELDS.JPG**
DWR
Jan 11, 2011 01:22 PM
[+ Actions](#)
- ATLAS DEEP WATER SHIP CHANNEL.JPG**
DWR
Jan 11, 2011 01:22 PM
[+ Actions](#)
- ATLAS RAILROADS.JPG**
34 North/DWR
Jan 11, 2011 01:22 PM
[+ Actions](#)
- ATLAS MAJOR ROADS.JPG**
34 North/DWR
Jan 11, 2011 01:22 PM
[+ Actions](#)
- ATLAS ELEVATIONS.JPG**
DWR
Jan 11, 2011 01:22 PM
[+ Actions](#)
- ATLAS BOAT LAUNCHED.JPG**
DWR
Jan 11, 2011 01:21 PM
[+ Actions](#)
- ATLAS TIDAL FLOWS.JPG**
DWR
Jan 11, 2011 01:21 PM
[+ Actions](#)
- ATLAS TIDAL LEVELS.JPG**
DWR
Jan 11, 2011 01:21 PM
[+ Actions](#)
- ATLAS HISTORIC FLOODING...**
DWR
Jan 11, 2011 01:21 PM
[+ Actions](#)
- ATLAS RECENT FLOODING 1967-1992.JPG**
DWR
Jan 11, 2011 01:20 PM
[+ Actions](#)
- ATLAS SALINITY 1921 - 1943.JPG**
DWR
Jan 11, 2011 01:20 PM
[+ Actions](#)
- ATLAS SALINITY 1944-1990.JPG**
DWR
Jan 11, 2011 01:20 PM
[+ Actions](#)
- ATLAS IRRIGATION DIVERSIONS.JPG**
DWR
Jan 11, 2011 01:19 PM
[+ Actions](#)
- ATLAS AGRICULTURE RETURNS.JPG**
DWR
Jan 11, 2011 01:19 PM
[+ Actions](#)
- ATLAS DELTA MONITORING**
- ATLAS MAJOR DIVERSIONS.JPG**

Mapping
 Web Services
 Collaborate-
 Wiki
 Presentation
 Document
 Management

BACK TO >>> MY DOCUMENTS

MAIN SEARCH RELATED + TOOLS + NEW

Phytoplankton_2005to2006.xlsx

CAPTION
BDAT Phytoplankton Data Example

Share
 Download

DESCRIPTION
Welcome to the Bay Delta and Tributaries (BDAT) Project site. BDAT contains environmental data concerning the San Francisco Bay-Delta and provides public access to that data. Over fifty organizations contribute data voluntarily to this project. The database includes biological, water quality, and meteorological data. These can be used to gauge the health of the estuary and to manage water and environmental resources.

MORE INFO URL
<http://bdat.ca.gov/index.html>

Article | Viewer | **Map** | Related/Results | + Share

bing © 2011 Microsoft Corporation © Earthstar Geographics LLC

Map navigation tools: Home, Back, Forward, Search, Measure, Scale, Layers, Search, Reset, Map Size, Map Info

ABOUT US | REFERENCES | CONTACT | SITE CREDITS | DATA DISCLAIMER AND PRIVACY STATEMENT
Text on this website is available under the terms of the Creative Commons Attribution-Share Alike license.

undocking LayerManager::-83::176

Mapping

Web Services

Collaborate-
Wiki

Presentation

Document
Management

USFWS_Spotlight_Species_5yrPlanActionPlan.

REFINE SEARCH [View All Listings](#) ?

Media

Regions

Library

Category Map It

Search



U.S. FISH AND WILDLIFE SERVICE – SPOTLIGHT SPECIES 5-YEAR ACTION PLAN 2010-2014

Common Name: Delta Smelt

Scientific Name: *Hypomesus transpacificus*

Lead Region: Pacific Southwest Region

Lead Field Office: San Francisco Bay-Delta Fish and Wildlife Office

Species Information:

Status: Threatened

Recovery Priority Number: 2C

Recovery Plan: Recovery Plan for the Sacramento/San Joaquin Delta Native Fishes, November 1996

Most Recent 5-year Review: March 31, 2004

Other: 90-Day Finding on a Petition to Reclassify the Delta Smelt (*Hypomesus transpacificus*) From Threatened to Endangered (73 FR 39639), July 10, 2008.

Other: Determination of Threatened Status for the Delta Smelt (58 FR 12854), March 5, 1993

Threats:

Factor A -- Present or threatened destruction, modification or curtailment of habitat or range

1. Salinity
 - Delta smelt utilize the low salinity zone (LSZ) as preferred habitat for rearing
 - Upstream reservoir operations, upstream diversions, and exports have reduced Delta outflow resulting in the LSZ moving upstream from its historic location
 - Upstream movement of the LSZ has resulted in delta smelt moving into smaller, less productive areas
 - Upstream movement of the LSZ in the fall is correlated with reduced smelt abundance the following summer
2. Turbidity
 - Delta smelt require turbid waters in rearing areas to capture prey and avoid predators

Mapping
Web Services
Collaborate-
Wiki
Presentation
Document
Management

BACK TO HOME

BROWSE

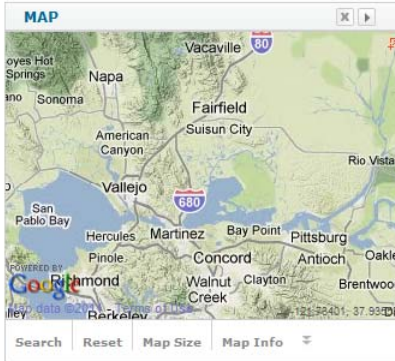
REFINE SEARCH [View All Listings](#)

Media

Regions

Map It

Search



DOCUMENTS

[+ NEW](#) View by: List **Icons** Order by: **Date** | Title / \

1 2 3 4 5 6 7 8 9 10 11 12 13 14 15 16 17 18 19 20 21 NEXT

- | | |
|--|--|
| <p>[P]  MODEL FOR TESTING
This model is for testing. And may be used for any kind of experiments, learning, saving, etc.
Jan 13, 2011 12:37 PM
+ Actions</p> | <p>[P]  DELTA TURBIDITY MODEL
The objective of this effort is to calibrate the turbidity model to the best available in-Delta turbidity data so that reasonably accurate turbidity ...
Jan 11, 2011 08:30 PM
+ Actions</p> |
| <p>[P]  GR_SESSION_1.MP4
Bay Delta Live Screen Cast for Gr Real-Time Data
34 North
Jan 11, 2011 07:43 PM
+ Actions</p> | <p>[P]  BDL MAP VIEW SENSORS
Jan 11, 2011 07:01 PM
+ Actions</p> |
| <p>[P]  ATLAS ORGANIC SOILS.JPG
DWR
Jan 11, 2011 01:24 PM
+ Actions</p> | <p>[P]  ATLAS MANAGED LAND.JPG
DWR
Jan 11, 2011 01:23 PM
+ Actions</p> |
| <p>[P]  ATLAS PROTECTED LANDS.JPG
DWR
Jan 11, 2011 01:23 PM
+ Actions</p> | <p>[P]  ATLAS CONSERVATION LANDS.JPG
DWR
Jan 11, 2011 01:23 PM
+ Actions</p> |
| <p>[P]  ATLAS LAND USES.JPG
DWR
Jan 11, 2011 01:23 PM
+ Actions</p> | <p>[P]  ATLAS URBAN AREAS.JPG
DWR
Jan 11, 2011 01:23 PM
+ Actions</p> |
| <p>[P]  ATLAS GAS OIL FIELDS.JPG
DWR
Jan 11, 2011 01:22 PM
+ Actions</p> | <p>[P]  ATLAS DEEP WATER SHIP CHANNEL.JPG
DWR
Jan 11, 2011 01:22 PM
+ Actions</p> |
| <p>[P]  ATLAS RAILROADS.JPG
34 North/DWR
Jan 11, 2011 01:22 PM
+ Actions</p> | <p>[P]  ATLAS MAJOR ROADS.JPG
34 North/DWR
Jan 11, 2011 01:22 PM
+ Actions</p> |
| <p>[P]  ATLAS ELEVATIONS.JPG
DWR
Jan 11, 2011 01:22 PM
+ Actions</p> | <p>[P]  ATLAS BOAT LAUNCHED.JPG
DWR
Jan 11, 2011 01:21 PM
+ Actions</p> |
| <p>[P]  ATLAS TIDAL FLOWS.JPG
DWR
Jan 11, 2011 01:21 PM
+ Actions</p> | <p>[P]  ATLAS TIDAL LEVELS.JPG
DWR
Jan 11, 2011 01:21 PM
+ Actions</p> |
| <p>[P]  ATLAS HISTORIC FLOODING...
DWR
Jan 11, 2011 01:21 PM
+ Actions</p> | <p>[P]  ATLAS RECENT FLOODING 1967-1992.JPG
DWR
Jan 11, 2011 01:20 PM
+ Actions</p> |
| <p>[P] ATLAS SALINITY 1921 - 1943.JPG
DWR
Jan 11, 2011 01:20 PM
+ Actions</p> | <p>[P] ATLAS SALINITY 1944-1990.JPG
DWR
Jan 11, 2011 01:20 PM
+ Actions</p> |
| <p>[P] ATLAS IRRIGATION DIVERSIONS.JPG</p> | <p>[P] ATLAS AGRICULTURE RETURNS.JPG</p> |

Mapping
Web Services
Collaborate-
Wiki
Presentation
Document
Management
Project
Management

BACK TO MY PROJECTS

Article | Viewer | Map | Related/Results | + Share

MAIN SEARCH RELATED + TOOLS + NEW

View by: List | Icons Order by: Date | Title / \ V

2 Gates Project Science Document
Public Access

REFINE SEARCH

View All Listings














Media

Regions

Library

Category Map It

Search

- [P]  **2 GATES REVIEW FINAL 2**
CALFED Independent Science Panel
Feb 03, 2010 02:31 PM
[+ Actions](#)
- [P]  **STATE OF THE SALMONIDS**
Peter B. Moyle
Oct 21, 2009 08:49 AM
[+ Actions](#)
- [P]  **ADAPTING CALIFORNIA'S WATER...**
Ellen Hanak and Jay Lund
Oct 20, 2009 09:10 AM
[+ Actions](#)
- [P]  **DISTRIBUTION MAPS OF FISHES IN...**
Peter B. Moyle
Oct 19, 2009 09:33 PM
[+ Actions](#)
- SALT.FLUX.FRANKS.WMV**
USGS-Jon Burau; 34 North
(www.34north.com)
Oct 14, 2009 03:30 PM
[+ Actions](#)
-  **CALFED SCIENCE PANEL 2_GATE_PRESE...**
Sep 25, 2009 05:37 PM
[+ Actions](#)
- [P]  **GATE PERSPECTIVE**
Jul 24, 2009 10:31 AM
[+ Actions](#)
- [P]  **APPENDIX E. FIXED-SITE MONITORING...**
Jul 16, 2009 07:09 PM
[+ Actions](#)
- [P]  **APPENDIX D. MONITORING AND...**
Jul 16, 2009 07:09 PM
[+ Actions](#)
- [P]  **APPENDIX B. PARTICLE TRACKING...**
Jul 16, 2009 07:08 PM
[+ Actions](#)
- [P]  **APPENDIX C. SACRAMENTO-SAN...**
Jul 16, 2009 07:09 PM
[+ Actions](#)
- [P]  **2-GATES PROJECT SCIENCE DOCUMENT....**
Jul 16, 2009 07:06 PM
[+ Actions](#)
- [P]  **APPENDIX A. PROJECT BACKGROUND...**
Jul 16, 2009 07:08 PM
[+ Actions](#)
- [P]  **DELTA VISION BLUE RIBBON TASK...**
Jan 22, 2009 03:59 PM
[+ Actions](#)

Subscribe to this feed.

Send to viewer.

Mapping

Web Services

Collaborate-

Wiki

Presentation

Document

Management

Project

Management

Social

Networking

Real Time Data Management Tools

- Access Real Time Data from CDEC

BAY-DELTA LIVE BETA Search [^] 63.7° Rio Vista, CA.

Get Data Tools Home Live Conditions Wiki Delta Atlas Photos/Videos/Docs Projects Community My Profile Science

<< BACK REFRESH

SESSION OPTIONS

GRAPH MODE

ENTER START DATE AND END DATE
2010-09-18 2010-09-21

OR DURATION
3 DAYS

GRAPHING OPTIONS

Overlay New Page
 New Graph Show Dialog

DATA AND PRESETS

CURRENT SESSION SAVED SESSIONS +

Save as Preset Clear All Graph Data ▶

Data Preview
Data Range Stn ID Sensor Duration

Open GR

MAP

SEARCH STATIONS

SEARCH [] Go

DATA SOURCE: CDEC (California Data Exc) SENSOR: WATER, TURBIDITY

REGIONS: Current Map Extent SENSOR TYPE: -- all --

MAP IT CLEAR PREVIOUS MAP RESULTS

STATIONS

View by: List | Icons Order by: Date | Title / \

1	2	3	4	5	6	7	8	9	10	11	12	13	14	15	16	17	18	19	20	21	22	23	24	25	26	27	28	29	30	31	32	33	34	35	36	37	38	39
NEXT																																						
5	STATION PRECIPITATION INDEX 55I		Oct 01, 2005 12:00 AM - Dec 31, 2010 12:00 AM	Preview Data Download URL Delete [&]																																		
8	STATION PRECIP INDEX 85I		Oct 01, 2000 12:00 AM - Dec 31, 2010 12:00 AM	Preview Data Map It Download URL Delete [&]																																		
8	STATION PRECIP INDEX (DWR-2) 85M		Oct 01, 2009 12:00 AM - Dec 31, 2010 12:00 AM	Preview Data Map It Download URL Delete [&]																																		
	ALHAMBRA CREEK ABA		Feb 25, 2004 12:00 AM - Dec 31, 2010 12:00 AM	Preview Data Map It Download URL Delete [&]																																		
	A&B CANAL NR JOHNSTONVILLE ABJ		Jul 08, 2005 12:00 AM - Sep 27, 2007 12:00 AM	Preview Data Map It Download URL Delete [&]																																		
	ALAMEDA CK BL CALAVERAS CK NR SUNOL, CA. ACC		Jan 10, 2000 12:00 AM - Dec 31, 2010 12:00 AM	Preview Data Map It Download URL Delete [&]																																		
	ALAMEDA CK ABOVE DIV DAM NR SUNOL, CA. ACC		Jan 10, 2000 12:00 AM - Dec 31, 2010 12:00 AM	Preview Data Map It Download URL Delete [&]																																		
	ARCADE CK NR DEL PASO HTS ACK		Aug 30, 2002 01:00 AM - Dec 31, 2010 12:00 AM	Preview Data Map It Download URL Delete [&]																																		

Real Time Data Management Tools

- Access Real Time Data from CDEC
- Select Sensor Type

<< BACK REFRESH

SESSION OPTIONS

GRAPH MODE

ENTER START DATE AND END DATE
2010-09-18 2010-09-21

OR DURATION
3 DAYS

GRAPHING OPTIONS

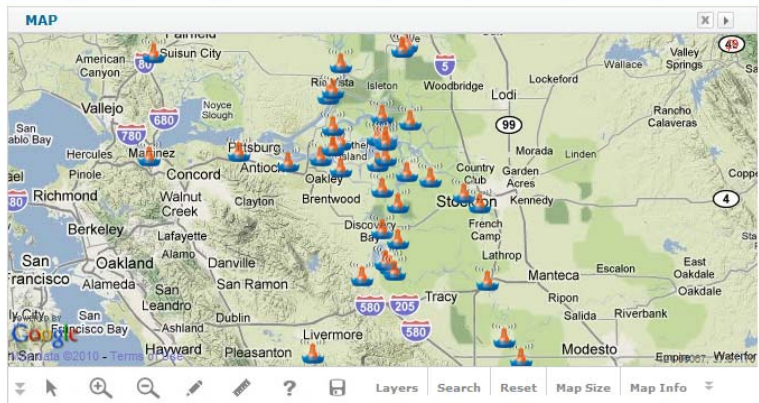
Overlay New Page
 New Graph Show Dialog

DATA AND PRESETS

CURRENT SESSION SAVED SESSIONS

Save as Preset Clear All Graph Data

Data Preview
Data Range Stn ID Sensor Duration



SEARCH STATIONS

SEARCH Go

DATA SOURCE: CDEC (California Data Exchange) SENSOR

REGIONS: Current Map Extent SENSOR TYPE

MAP IT

CLEAR PREVIOUS MAP RESULTS

- WATER, TURBIDITY
- WATER, DISSOLVED FLUORIDE, F
- WATER, DISSOLVED NITRATE, NO3
- WATER, DISSOLVED OXYGEN
- WATER, DISSOLVED PHOSPHATE, PO4
- WATER, DISSOLVED SULPHATE, SO4
- WATER, PH VALUE
- WATER, SUSPENDED SEDIMENT
- WATER, TURBIDITY
- WATER, VELOCITY
- WETNESS INDEX, FORECASTED
- WETNESS INDEX, SUM AVG FCST
- WIND, ACCUM WIND TRAVEL
- WIND, DIRECTION
- WIND, DIRECTION OF PEAK GUST
- WIND, PEAK GUST
- WIND, SPEED
- WIND, SPEED AVG
- WIND, SPEED MIN
- WIND, TRAVEL LENGTH
- X2, DAILY CALCULATION

STATIONS

View by: List | Icons Order by: Date | Title

SAN JOAQUIN RIVER AT ANTIOCH ANH	Oct 16, 2008 12:00 AM - Dec 31, 2010 12:00 AM	Preview Data Download
BLIND POINT BLP	Dec 01, 1995 12:00 AM - Aug 22, 1999 12:00 AM	Preview Data Download
CLIFTON COURT CLC	Mar 10, 1988 12:00 AM - Dec 31, 2010 12:00 AM	Preview Data Download URL Delete [&]
CORDELIA PUMPING PLANT (KG002111) CPP	Mar 01, 1993 12:00 AM - Dec 31, 2010 12:00 AM	Preview Data Map It Download URL Delete [&]
DELTA CROSS CHANNEL BTW SAC R & SNODGRAS DLC	Dec 01, 2009 12:00 AM - Dec 31, 2010 12:00 AM	Preview Data Map It Download URL Delete [&]
DUTCH SLOUGH AT JERSEY ISLAND DSJ	Dec 09, 2009 12:00 AM - Dec 31, 2010 12:00 AM	Preview Data Map It Download URL Delete [&]
DEL VALLE CHECK 7 (KB001638) DV7	Jun 07, 1994 12:00 AM - Dec 31, 2010 12:00 AM	Preview Data Map It Download URL Delete [&]
FALSE RIVER FAL	Jan 03, 2008 12:00 AM - Dec 31, 2010 12:00 AM	Preview Data Map It Download URL Delete [&]
SACRAMENTO RIVER BELOW GEORGIANA SLOUGH GSS	Dec 03, 2009 12:00 AM - Dec 31, 2010 12:00 AM	Preview Data Map It Download URL Delete [&]

Real Time Data Management Tools

- Access Real Time Data from CDEC
- Select Sensor Type
- Choose Time Frame

<< BACK REFRESH

SESSION OPTIONS

GRAPH MODE

ENTER START DATE AND END DATE
2010-09-18 2010-09-21

OR DURATION
3 DAYS

GRAPHING OPTIONS

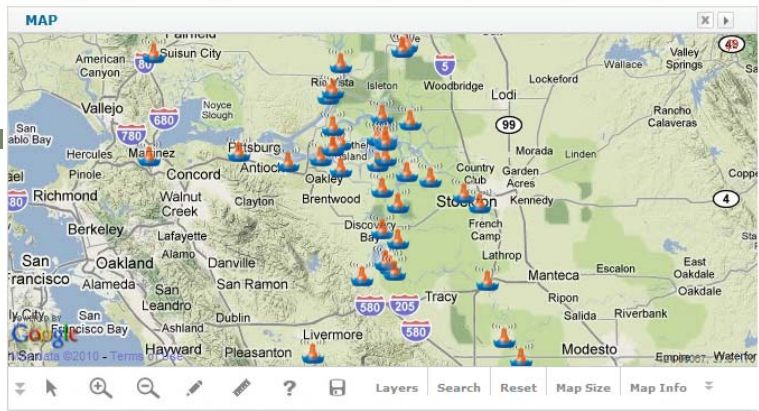
Overlay New Page
 New Graph Show Dialog

DATA AND PRESETS

CURRENT SESSION SAVED SESSIONS +

Save as Preset Clear All Graph Data ▶

Data Preview
Data Range Stn ID Sensor Duration



SEARCH STATIONS

SEARCH [input] Go

DATA SOURCE: CDEC (California Data Exch) SENSOR: WATER, TURBIDITY

REGIONS: Current Map Extent SENSOR TYPE: [dropdown]

MAP IT

CLEAR PREVIOUS MAP RESULTS

STATIONS

View by: List | Icons Order by: Date | Title

Station Name	Time Range	Actions
SAN JOAQUIN RIVER AT ANTOCH ANH	Oct 16, 2008 12:00 AM - Dec 31, 2010 12:00 AM	Preview Data Download
BLIND POINT BLP	Dec 01, 1995 12:00 AM - Aug 22, 1999 12:00 AM	Preview Data Download
CLIFTON COURT CLC	Mar 10, 1988 12:00 AM - Dec 31, 2010 12:00 AM	Preview Data Download URL Delete [&]
CORDELIA PUMPING PLANT (KG002111) CPP	Mar 01, 1993 12:00 AM - Dec 31, 2010 12:00 AM	Preview Data Map It Download URL Delete [&]
DELTA CROSS CHANNEL BTW SAC R & SNODGRAS DLC	Dec 01, 2009 12:00 AM - Dec 31, 2010 12:00 AM	Preview Data Map It Download URL Delete [&]
DUTCH SLOUGH AT JERSEY ISLAND DSJ	Dec 09, 2009 12:00 AM - Dec 31, 2010 12:00 AM	Preview Data Map It Download URL Delete [&]
DEL VALLE CHECK 7 (KB001638) DV7	Jun 07, 1994 12:00 AM - Dec 31, 2010 12:00 AM	Preview Data Map It Download URL Delete [&]
FALSE RIVER FAL	Jan 03, 2008 12:00 AM - Dec 31, 2010 12:00 AM	Preview Data Map It Download URL Delete [&]
SACRAMENTO RIVER BELOW GEORGIANA SLOUGH GSS	Dec 03, 2009 12:00 AM - Dec 31, 2010 12:00 AM	Preview Data Map It Download URL Delete [&]

- WATER, TURBIDITY
- WATER, DISSOLVED FLUORIDE, F
- WATER, DISSOLVED NITRATE, NO3
- WATER, DISSOLVED OXYGEN
- WATER, DISSOLVED PHOSPHATE, PO4
- WATER, DISSOLVED SULPHATE, SO4
- WATER, PH VALUE
- WATER, SUSPENDED SEDIMENT
- WATER, VELOCITY
- WETNESS INDEX, FORECASTED
- WETNESS INDEX, SUM AVG FCST
- WIND, ACCUM WIND TRAVEL
- WIND, DIRECTION
- WIND, DIRECTION OF PEAK GUST
- WIND, PEAK GUST
- WIND, SPEED
- WIND, SPEED AVG
- WIND, SPEED MIN
- WIND, TRAVEL LENGTH
- X2, DAILY CALCULATION

Real Time Data Management Tools

 Search [^] 63.7°
Rio Vista, CA. 

Get Data Tools Home Live Conditions Wiki Delta Atlas Photos/Videos/Docs Projects Community My Profile Science

<< BACK REFRESH

SESSION OPTIONS

GRAPH MODE
ENTER START DATE AND END DATE
2010-09-18 2010-09-21

OR DURATION
3 DAYS

GRAPHING OPTIONS

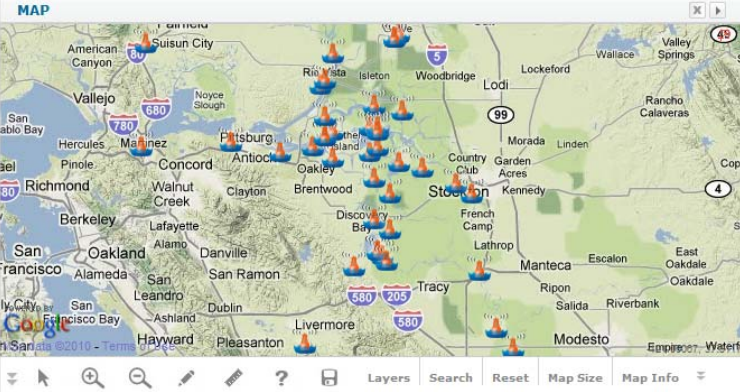
Overlay New Page
 New Graph Show Dialog

DATA AND PRESETS

CURRENT SESSION SAVED SESSIONS

Save as Preset Clear All Graph Data
Data Preview
Data Range Stn ID Sensor Duration

Open GR



SEARCH STATIONS

SEARCH

DATA SOURCE CDEC (California Data Exc)

SENSOR

REGIONS Current Map Extent

SENSOR TYPE

MAP IT

CLEAR PREVIOUS MAP RESULTS

WATER, TURBIDITY
WATER, DISSOLVED FLUORIDE, F
WATER, DISSOLVED NITRATE, NO3
WATER, DISSOLVED OXYGEN
WATER, DISSOLVED PHOSPHATE, PO4
WATER, DISSOLVED SULPHATE, SO4
WATER, PH VALUE
WATER, SUSPENDED SEDIMENT

WATER, TURBIDITY
WATER, VELOCITY
WETNESS INDEX, FORECASTED
WETNESS INDEX, SUM AVG FCST
WIND, ACCUM WIND TRAVEL
WIND, DIRECTION
WIND, DIRECTION OF PEAK GUST
WIND, PEAK GUST
WIND, SPEED
WIND, SPEED AVG
WIND, SPEED MIN
WIND, TRAVEL LENGTH
X2, DAILY CALCULATION

STATIONS

View by: List Icons Order by: Date Title

SAN JOAQUIN RIVER AT ANTOCH ANH	Oct 16, 2008 12:00 AM - Dec 31, 2010 12:00 AM	Preview Data Download
BLIND POINT BLP	Dec 01, 1995 12:00 AM - Aug 22, 1999 12:00 AM	Preview Data Download
CLIFTON COURT CLC	Mar 10, 1988 12:00 AM - Dec 31, 2010 12:00 AM	Preview Data Download URL Delete [&]
CORDELIA PUMPING PLANT (KG002111) CPP	Mar 01, 1993 12:00 AM - Dec 31, 2010 12:00 AM	Preview Data Map It Download URL Delete [&]
DELTA CROSS CHANNEL BTW SAC R & SNODGRAS DLC	Dec 01, 2009 12:00 AM - Dec 31, 2010 12:00 AM	Preview Data Map It Download URL Delete [&]
DUTCH SLOUGH AT JERSEY ISLAND DSJ	Dec 09, 2009 12:00 AM - Dec 31, 2010 12:00 AM	Preview Data Map It Download URL Delete [&]
DEL VALLE CHECK 7 (KB001638) DV7	Jun 07, 1994 12:00 AM - Dec 31, 2010 12:00 AM	Preview Data Map It Download URL Delete [&]
FALSE RIVER FAL	Jan 03, 2008 12:00 AM - Dec 31, 2010 12:00 AM	Preview Data Map It Download URL Delete [&]
SACRAMENTO RIVER BELOW GEORGIANA SLOUGH GSS	Dec 03, 2009 12:00 AM - Dec 31, 2010 12:00 AM	Preview Data Map It Download URL Delete [&]

- Access Real Time Data from CDEC
- Select Sensor Type
- Choose Time Frame
- One Click Graph Mode

Real Time Data Management Tools

- Access Real Time Data from CDEC
- Select Sensor Type
- Choose Time Frame
- One Click Graph Mode

BAY-DELTA LIVE BETA Search [^] 63.7° Rio Vista, CA.

Get Data Tools Home Live Conditions Wiki Delta Atlas Photos/Videos/Docs Projects Community My Profile Science

<< BACK REFRESH

SESSION OPTIONS

GRAPH MODE

ENTER START DATE AND END DATE
2010-09-18 2010-09-21

OR DURATION
3 DAYS

GRAPHING OPTIONS

Overlay New Page
 New Graph Show Dialog

DATA AND PRESETS

CURRENT SESSION SAVED SESSIONS +

Save as Preset Clear All Graph Data ▶

Data Preview
Data Range Stn ID Sensor Duration

Open GR.

MAP

LPS - LITTLE POTATO SLOUGH AT TERMINOUS
SAN JOAQUIN R
USGS
UnMap
WATER, TURBIDITY: [+] [GR]
RIVER STAGE: [+] [GR]
FLOW, RIVER DISCHARGE: [+] [GR]
WATER, VELOCITY: [+] [GR]
TEMPERATURE, WATER: [+] [GR]
WATER, TURBIDITY: [+] [GR]
ELECTRICAL CONDUCTIVITY MICRO S: [+] [GR]
Preview all station parameters.

SEARCH STATIONS

SEARCH [] Go

DATA SOURCE: CDEC (California Data Exc) SENSOR: WATER, TURBIDITY

REGIONS: Current Map Extent SENSOR TYPE: -- all --

CLEAR PREVIOUS MAP RESULTS

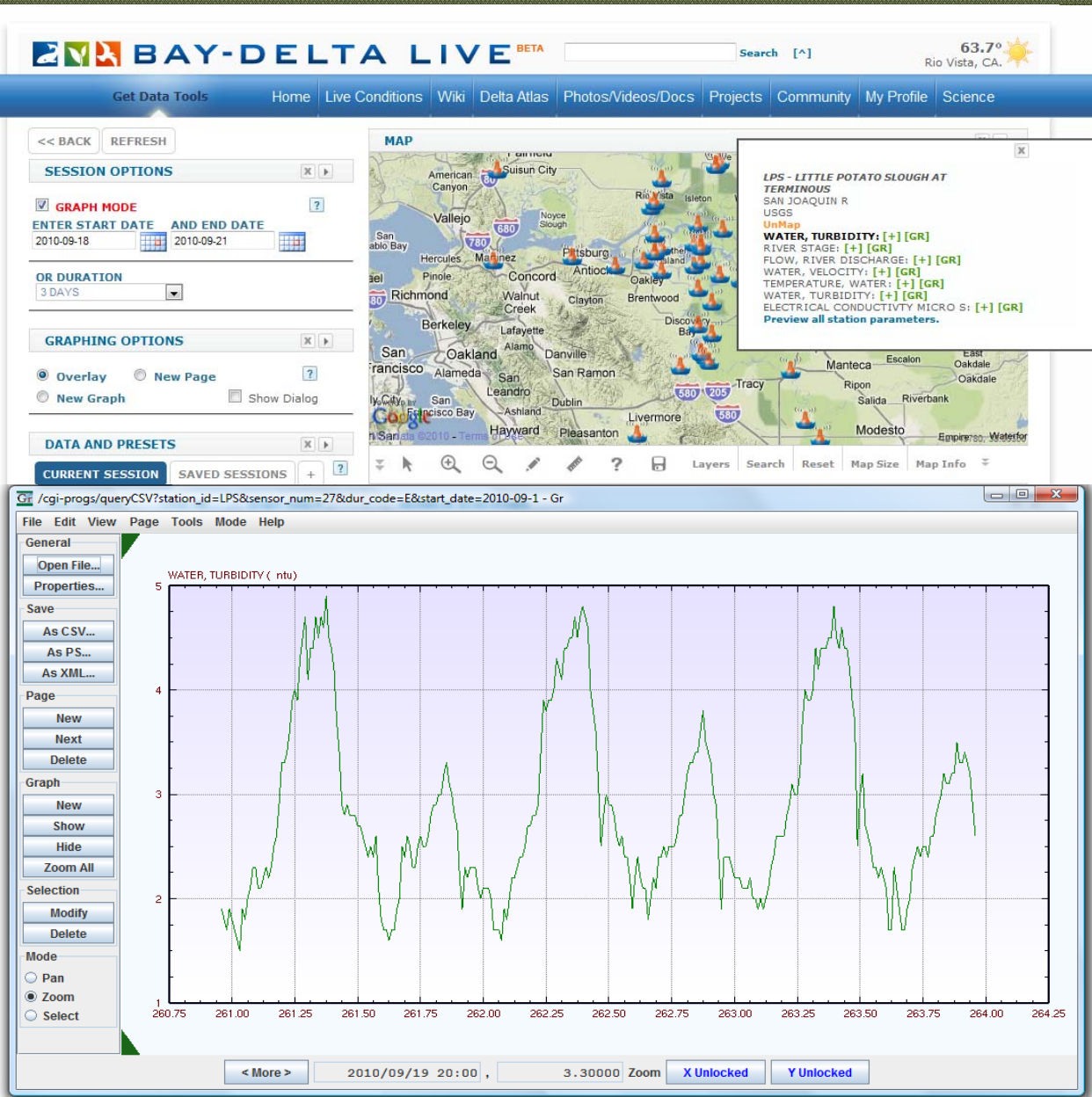
STATIONS

View by: List Icons Order by: Date | Title / \ V

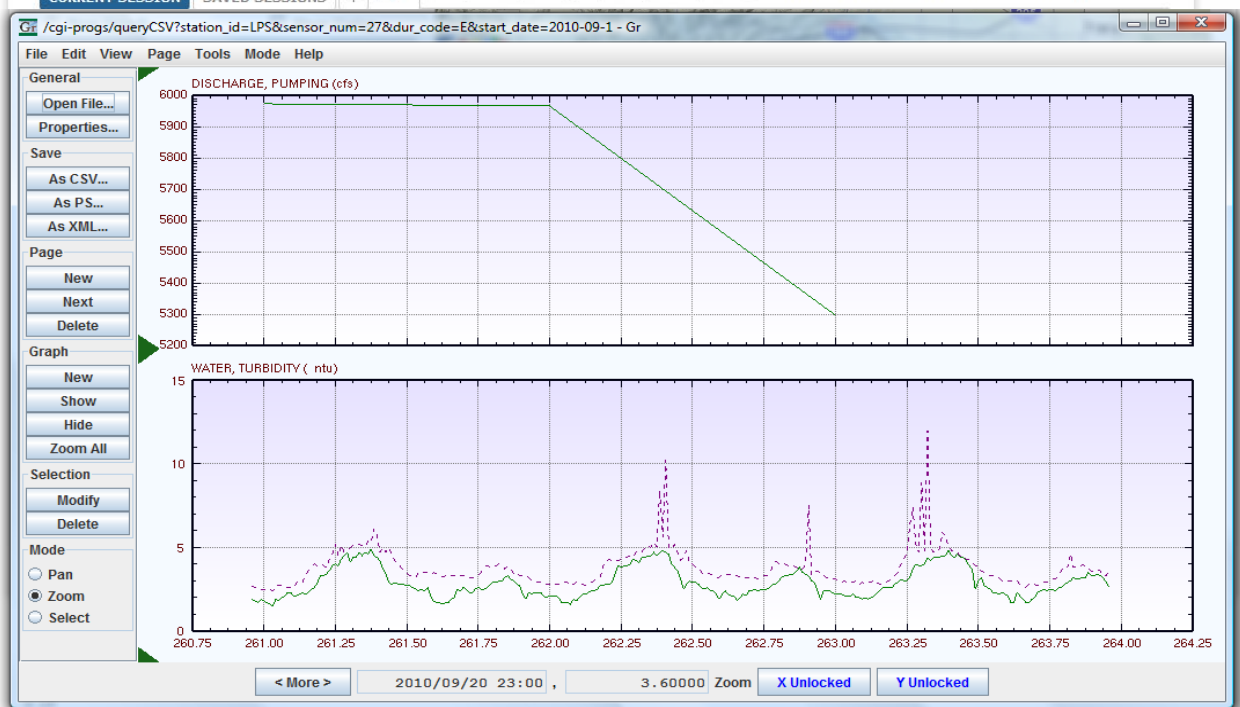
STATION NAME	DATE RANGE	ACTIONS
SAN JOAQUIN RIVER AT ANTIOCH ANH	Oct 16, 2008 12:00 AM - Dec 31, 2010 12:00 AM	Preview Data Map It Download URL Delete [&]
BLIND POINT BLP	Dec 01, 1995 12:00 AM - Aug 22, 1999 12:00 AM	Preview Data Map It Download URL Delete [&]
CLIFTON COURT CLC	Mar 10, 1988 12:00 AM - Dec 31, 2010 12:00 AM	Preview Data Map It Download URL Delete [&]
CORDELIA PUMPING PLANT (KG002111) CPP	Mar 01, 1993 12:00 AM - Dec 31, 2010 12:00 AM	Preview Data Map It Download URL Delete [&]
DELTA CROSS CHANNEL BTW SAC R & SNODGRAS DLC	Dec 01, 2009 12:00 AM - Dec 31, 2010 12:00 AM	Preview Data Map It Download URL Delete [&]
DUTCH SLOUGH AT JERSEY ISLAND DSJ	Dec 09, 2009 12:00 AM - Dec 31, 2010 12:00 AM	Preview Data Map It Download URL Delete [&]
DEL VALLE CHECK 7 (KB001638) DV7	Jun 07, 1994 12:00 AM - Dec 31, 2010 12:00 AM	Preview Data Map It Download URL Delete [&]
FALSE RIVER FAL	Jan 03, 2008 12:00 AM - Dec 31, 2010 12:00 AM	Preview Data Map It Download URL Delete [&]
SACRAMENTO RIVER BELOW GEORGIANA SLAUCH C55	Dec 03, 2009 12:00 AM - Dec 31, 2010 12:00 AM	Preview Data Map It Download URL Delete [&]

Real Time Data Management Tools

- Access Real Time Data from CDEC
- Select Sensor Type
- Choose Time Frame
- One Click Graph Mode
- Send Data to GR



Real Time Data Management Tools



- Access Real Time Data from CDEC
- Select Sensor Type
- Choose Time Frame
- One Click Graph Mode
- Send Data to GR
- Overlay Data – Add new graphs

Using Time Series Data for Scalar Field Interpolations:

Field Interpolations:

A Spatial Contour Mapping and Animation Modeling Toolset to Observe Point Time Series Data

BAY-DELTA LIVE BETA Search [^] 77.9° Rio Vista, CA

Real Time Data Tools Home Live Conditions Wiki Delta Atlas Photos/Videos/Docs Projects Community My Profile Science

<< BACK REFRESH

SESSION OPTIONS

GRAPH MODE

ENTER START DATE AND END DATE
2010-09-24 2010-09-27

OR DURATION
3 DAYS

MAKE A COLOR SCHEME CHOOSE A COLOR PRESET

TIMELINE

GRAPHING OPTIONS

Overlay New Page
 New Graph Show Dialog

MAP

SEARCH STATIONS

SEARCH [] Go

DATA SOURCE: CDEC (California Data Exc) SENSOR: TURBIDITY

<< BACK REFRESH

SESSION OPTIONS

GRAPH MODE

ENTER START DATE AND END DATE
2010-09-24 2010-09-27

OR DURATION
3 DAYS

MAKE A COLOR SCHEME CHOOSE A COLOR PRESET



GRAPHING OPTIONS

Overlay New Page
 New Graph Show Dialog

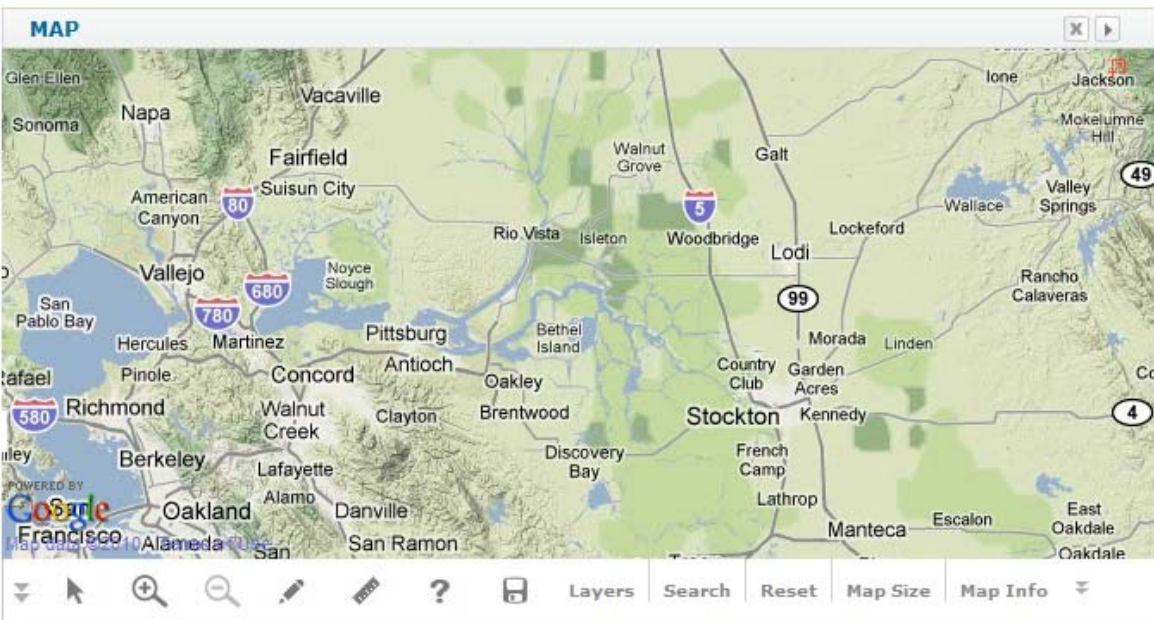
DATA AND PRESETS

CURRENT SESSION SAVED SESSIONS +

Save as Preset Clear All Graph Data

Metadata

Data Range	Stn ID	Sensor	Duration
Sep 24, 2010 12:00AM - Sep 27, 2010 12:00AM	MOK	TURB W	EVENT [-]
Sep 24, 2010 12:00AM - Sep 27, 2010 12:00AM	LPS	TURB W	EVENT [-]



Title: Author:

SEARCH STATIONS

SEARCH Go

DATA SOURCE: CDEC (California Data Exc) SENSOR: TURBIDITY

REGIONS: Current Map Extent DATA CATEGORY: - all -

MAP IT

CLEAR PREVIOUS MAP RESULTS

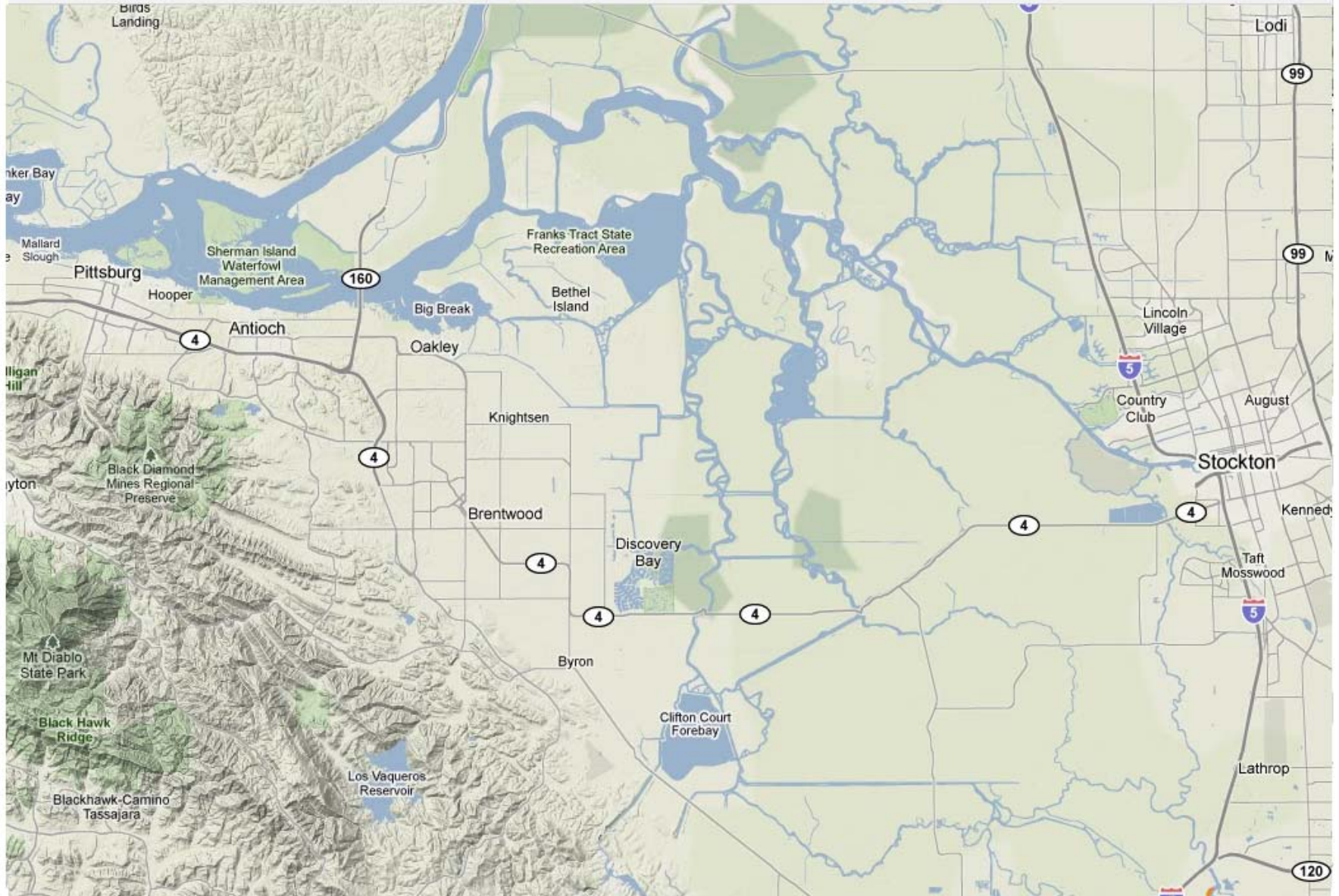
STATIONS

View by: List | Icons Order by: Date | Title

SAN JOAQUIN RIVER AT ANTIOCH ANH	Oct 16, 2008 12:00 AM - Dec 31, 2010 12:00 AM	Preview Data Map It Download URL Delete [&]
---	---	---



MAP



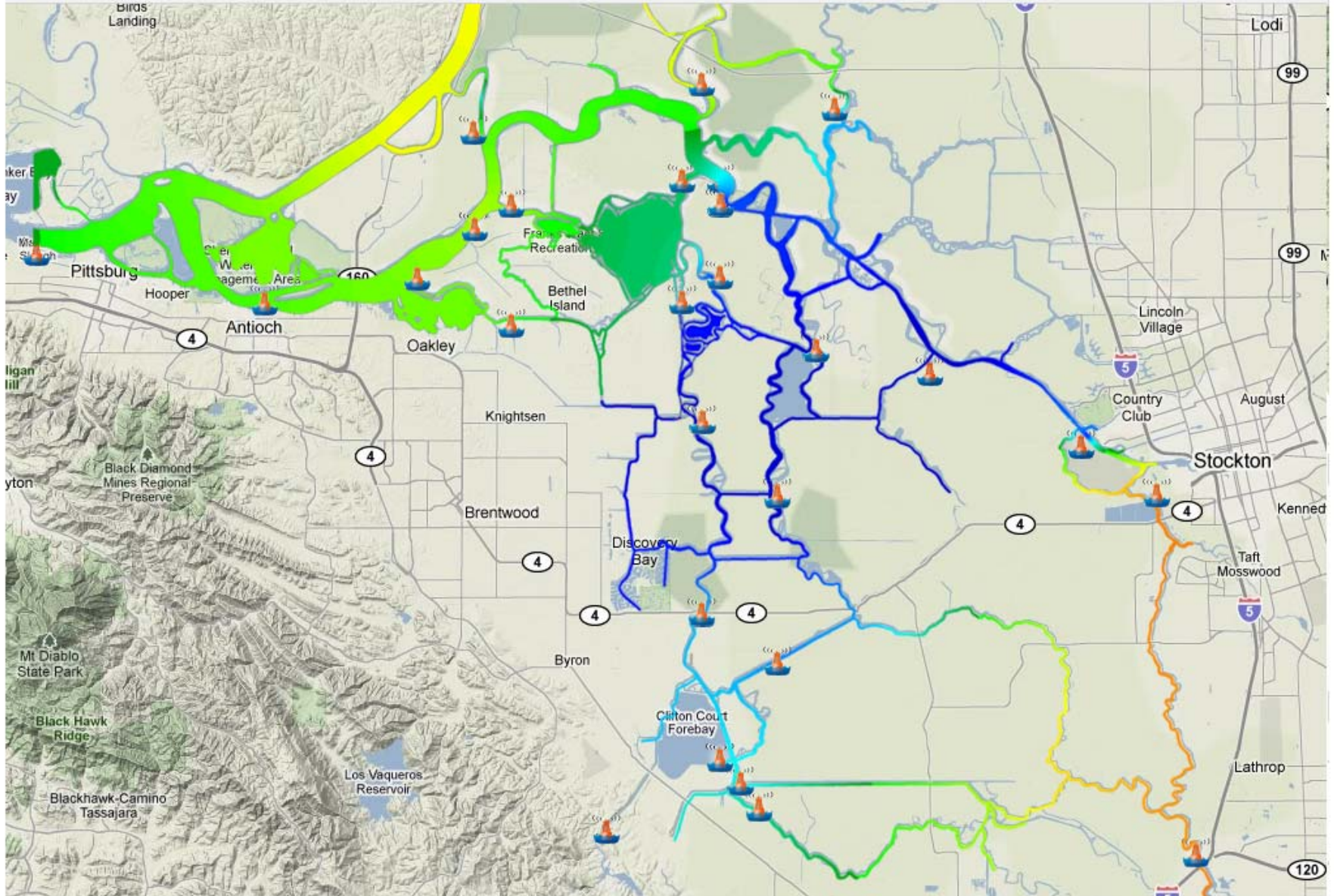


MAP





MAP



*Data
Services/
Databases*

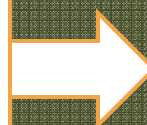
-CDEC
-CEDEN
-BDAT

OpenNRM CMS, Toolsets and Services

- Document Catalog and Archive
- Mapping Engine
- Projects Data
- Real Time Data Tools
- Syndication Engine

Estuary Portal Administrator Access

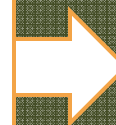
- Advisory Board
- Data Service Administrators
- Estuary Program Managers and Technical Staff



Publish
Content

Regional Estuary Portal Templates

- Sacramento Bay Delta
- Los Angeles
- San Diego
- Santa Ynez



Syndicate

State of California

Estuarine Health
Summary
Templates

Phase 1 Suggestions

1. Customize OpenNRM Administrative Toolset to meet Estuary Program Content Objectives.
2. Create Product Document and Wireframe (Site Specifications).
3. Design Comps to be approved by California Water Quality Monitoring Council: Cartography, Style Guide, Data Presentation Libraries
4. Develop and Build Supplemental Data Tables.
5. Investigate formats and accessibility issues with data sources: CEDEN, BDAT etc.
6. Investigate the Development of Data Services and Tools for Consuming and Publishing Data.