

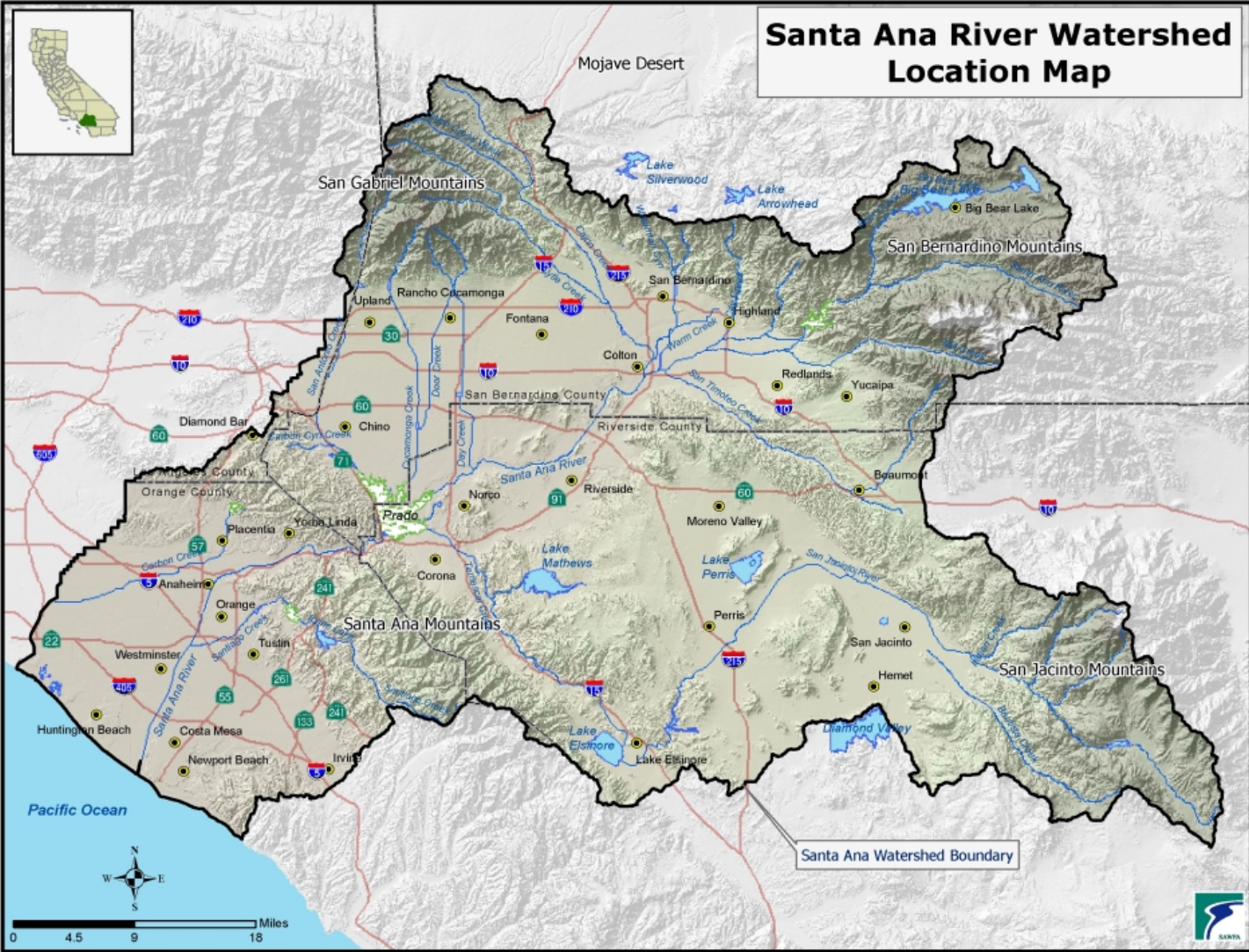
SANTA ANA RIVER WATERSHEAD BACTERIA MONITORING PROGRAM

David Woelfel

Senior Environmental Scientist



Santa Ana River Watershed Location Map



MIDDLE SANTA ANA RIVER



MONITORING PLAN ROADMAP

(inland surface waters)

- Implement monitoring and surveillance requirements of the 2012 REC Standards BPA
- Conduct sampling to support implementation of the MSAR Bacteria TMDL
- Support any additional bacteria indicator monitoring to support regional activities



Regional Monitoring Program (RMP)

- Provide data needed to determine if water quality in the most popular water contact REC waters meets standards
- Facilitate the MSAR TMDL Implementation
- Apply a risk-based implementation strategy for the best allocation of public resources



RMP Monitoring Priorities

- Priority 1: To determine if most popular water contact REC waters are safe
- Priority 2: TMDL adopted waters
- Priority 3: 303 (d) listed impaired waterbodies with no TMDL
- Priority 4: Implement antidegradation targets





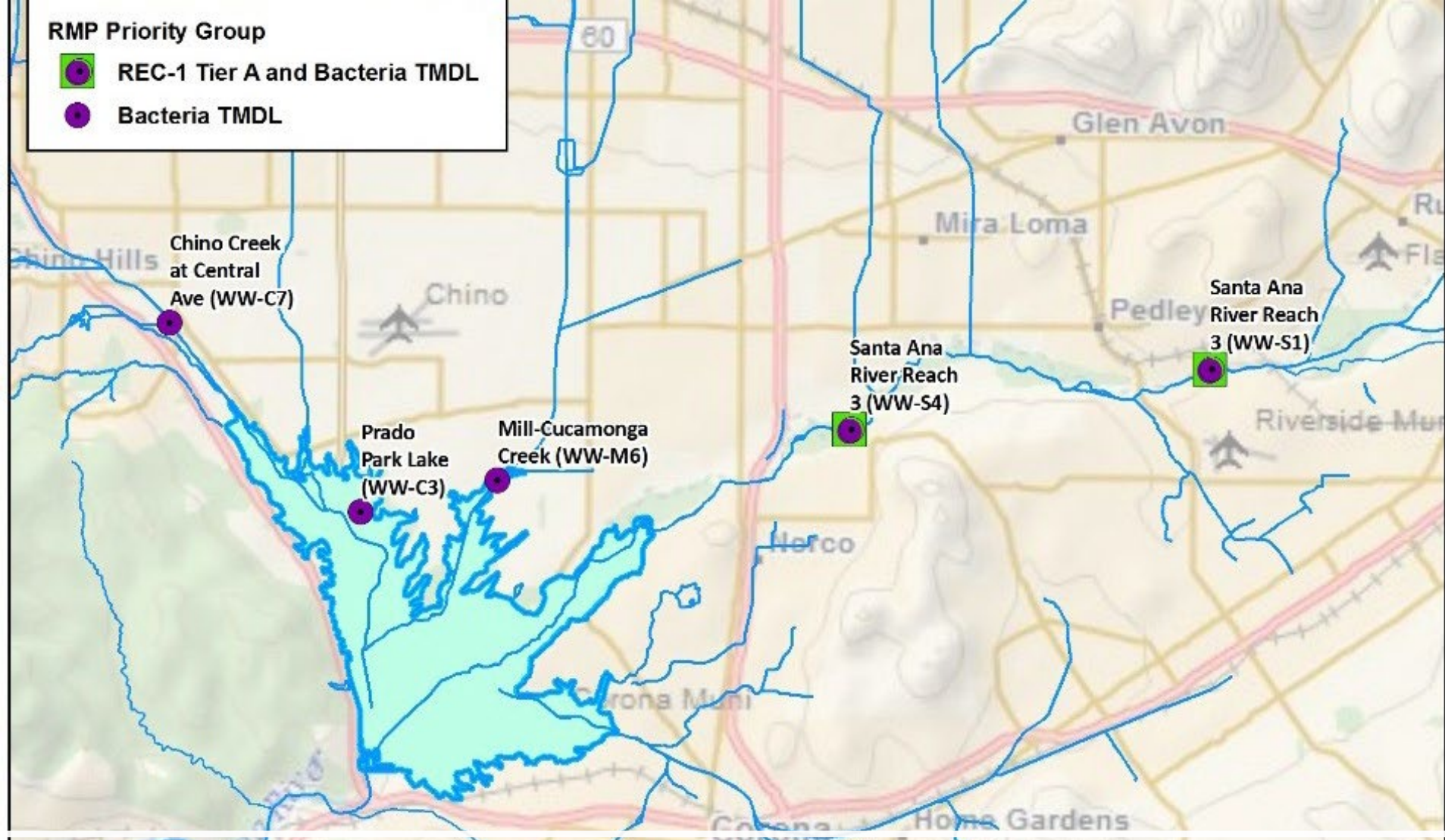
Priority 1 – REC1 Tier A Waters

- Big Bear Lake, Lake Perris, Canyon Lake, Lake Elsinore, SAR Reach 3, Lytle Creek Middle Reach Fork, and Mill Creek Reach 2
- 20-week dry weather sampling (May 1 and Sept 30) / One 6-week cool season (October through November)



RMP Priority Group

-  REC-1 Tier A and Bacteria TMDL
-  Bacteria TMDL

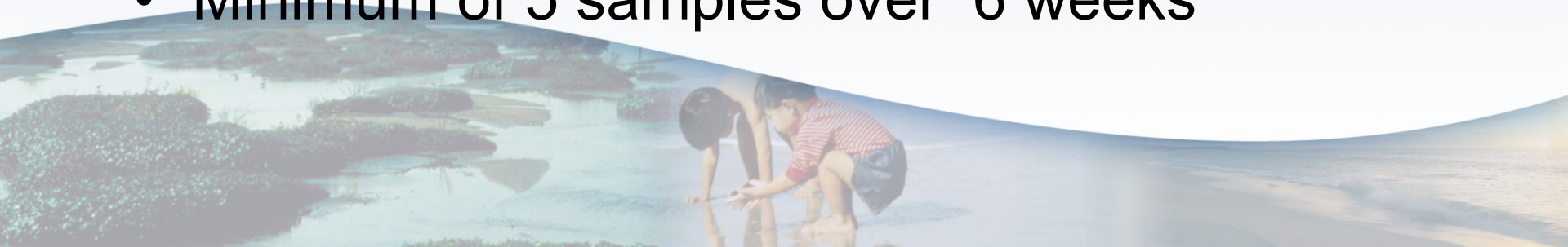


Priority 2



Priority 3

- 303 (d) listed or impaired waters (for Bacteria) with no TMDL yet developed
- Newport Coast streams, Borrego Creek, Peters Canyon Wash, San Diego Creek, SAR Reach 4, Goldenstar Creek
- Minimum of 5 samples over 6 weeks



Priority 4 Waters

- REC1 use has been de-designated as a result of an approved UAA
- Santa Ana Delhi, Greenville Banning Channels, Temescal Creek Reach 1a and 1b, and Cucamonga Creek Reach 1
- Antidegradation targets developed



2019 Quarter 3 Dry Weather E.coli Geomean Concentrations (MPN /100 mL)

Site ID	Site	Geomean (highest over 12 weeks)
P1-1	Canyon Lake	2.1
P1-2	Lake Elsinore	10.7
P1-3	Lake Perris	9.2
P1-4	Big Bear Lake	3.1
P1-5	Mill Creek	1.9
P1-6	Lytle Creek	5.6
WW-S1	SAR MWD X	199
WW-S4	SAR Pedley Ave	138
WW-C3	Prado Park Lake	84
WW-C7	Chino Creek	674
WW-M6	Mill-Cucamonga	237

QUESTIONS

